

WPS Mini - Workpiece

Clamping pin WPS Mini

Clamping pin	Id.-No.
Clamping pin WPS Mini	460399

Clamping workpiece



WPS Mini flange module



Clamping pin M10

for mounting flange module on WPS 080
Id. No. 467008



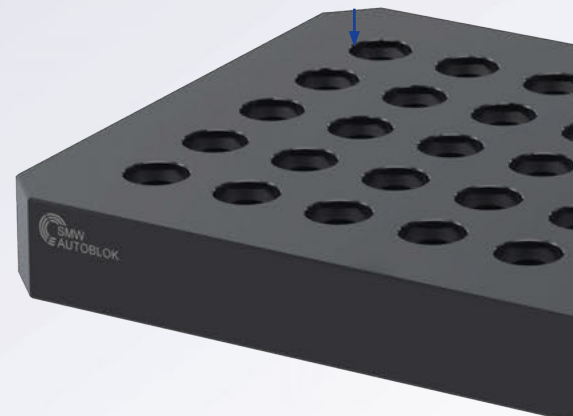
Clamping module with flange

Height 40 mm
Id. No. 460180



Clamping module Ø80

Height 60 mm, Id. No. 460181
Height 80 mm, Id. No. 460182
Height 160 mm, Id. No. 460183



positioning system

Clamping
workpiece



- • • • • • **Reduction Ø 20**
Detail description see page 104



- • • • • • **Further WPS Mini clamping modules Ø 40 mountable on top**
Height 40 mm, Id. No. 460396

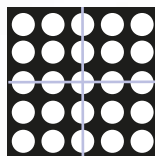


Grid plates (examples)

Grid 50 and 100 mm
Material 1.2311/1.2312

Grid (in center)

Positioning holes Ø12H6,
thread M10

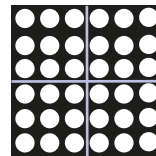


Grid	Length	Width
50 / 100	500	500
50 / 100	600	600
50 / 100	800	800
50 / 100	1000	500
50 / 100	1000	800
50 / 100	1200	800
50 / 100	1000	1000

Special versions on request.

Grid (not in center)

Positioning holes Ø12H6,
thread M10



Grid	Length	Width
50 / 100	600	400
50 / 100	500	500
50 / 100	600	500
50 / 100	600	800
50 / 100	1000	500
50 / 100	1000	600
50 / 100	1000	800
50 / 100	1000	1000

Special versions on request.

WPS Mini

Workpiece positioning system

Flange module

- Single quick-actuation for the rapid opening and closing
- Fully sealed

Application/customer benefits

- Huge reduction of set-up times for highest efficiency
- Safe workpiece clamping with maximum holding forces and highest repeatability
- Ideal for 5-axis machining
- Central quick actuation (270° rotation)
- Flexible configurations for customized use
- To adapt WPS Mini on WPS 080

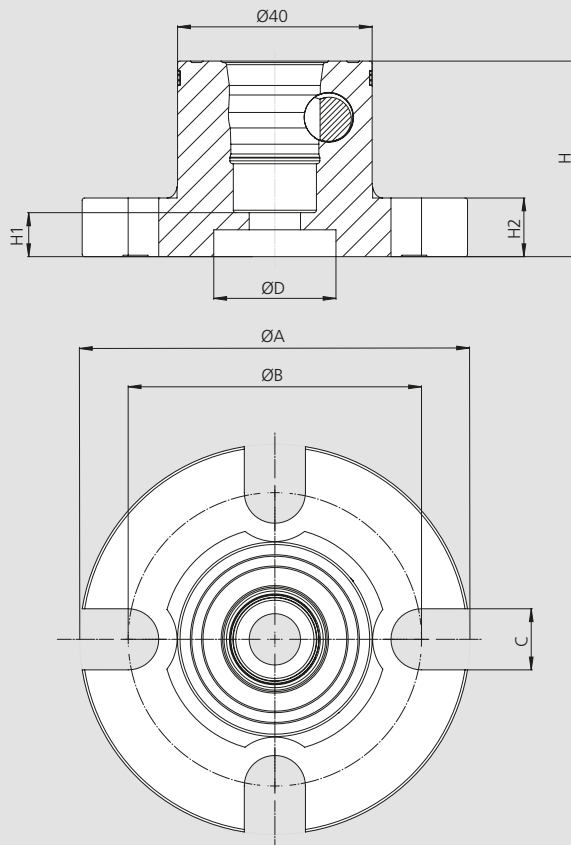
Technical features

- Diameter 80 / 40 mm, Height 40 mm
- Pull-in force 2.5 kN
- Max. torque 10 Nm
- Repeatability < 0.005 mm
- Holding force 25 kN (mounting screw M10 - 12.9)
- **proofline®** = fully sealed - low maintenance



proofline® series
fully sealed – low maintenance

Subject to technical changes.



Technical data

SMW-AUTOBLOK Type		WPS Mini 040 460485
A	mm	80
B	mm	60
C	mm	12.5
D / Depth	mm	Ø 25H6 / 5.5
H	mm	40 ± 0.005
H1	mm	9
H2	mm	12
Pull-in force	kN	2.5
Repeatability	mm	< 0.005
Holding force clamping pin M10	kN	16
Holding force clamping pin M8	kN	10

- Single quick-actuation for the rapid opening and closing
- Fully sealed

Workpiece positioning system



proofline® series
fully sealed – low maintenance

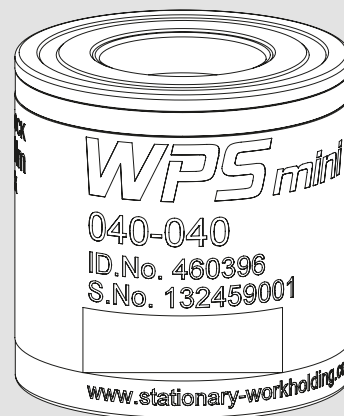
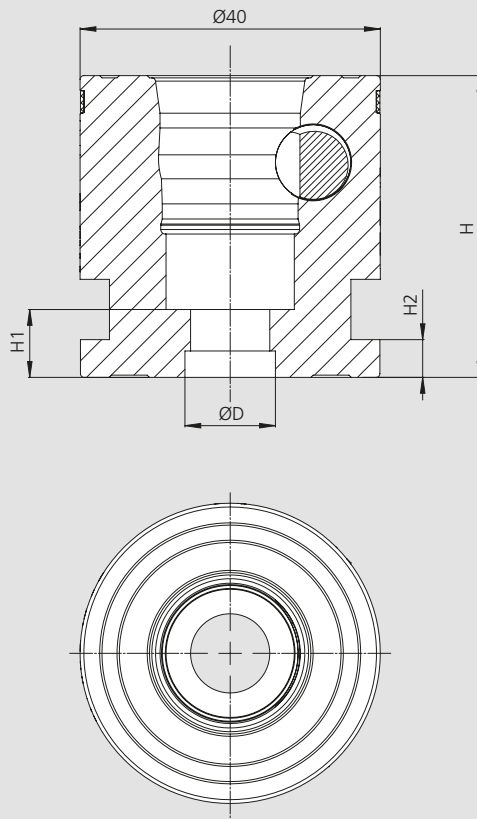
Application/customer benefits

- Huge reduction of set-up times for highest efficiency
- Safe workpiece clamping with maximum holding forces and highest repeatability
- Ideal for 5-axis machining
- Central quick actuation (270° rotation)
- Flexible configurations for customized use
- Interchangeable to the zero point system WPS by using flange module

Technical features

- Diameter 80 / 40 mm, Height 40 mm
- Pull-in force 2.5 kN
- Max. torque 10 Nm
- Repeatability < 0.005 mm
- Holding force 25 kN (mounting screw M10 - 12.9)
- **proofline®** = fully sealed - low maintenance

Subject to technical changes.



Technical data

SMW-AUTOBLOK Type		WPS Mini 040-040 460396	
D / Depth	mm	ø 25H6 / 5.5	
H	mm	40 ± 0.005	
H1	mm	9	
H2	mm	12	
Pull-in force	kN	2,5	
Repeatability	mm	< 0.005	
Holding force clamping pin M10	kN	16	
Holding force clamping pin M8	kN	10	

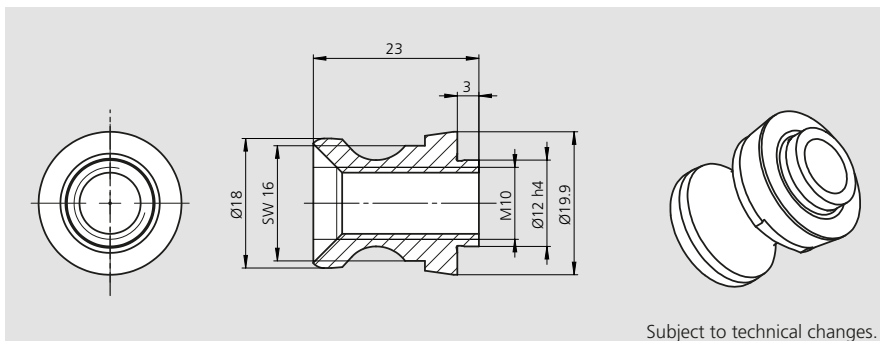
WPS Mini

Workpiece positioning system

Manual zero point clamping system for workpiece direct clamping

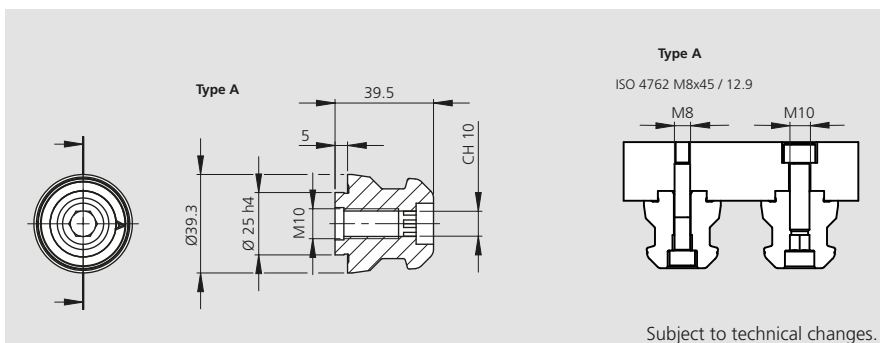
■ Accessories

Clamping pin for WPS Mini



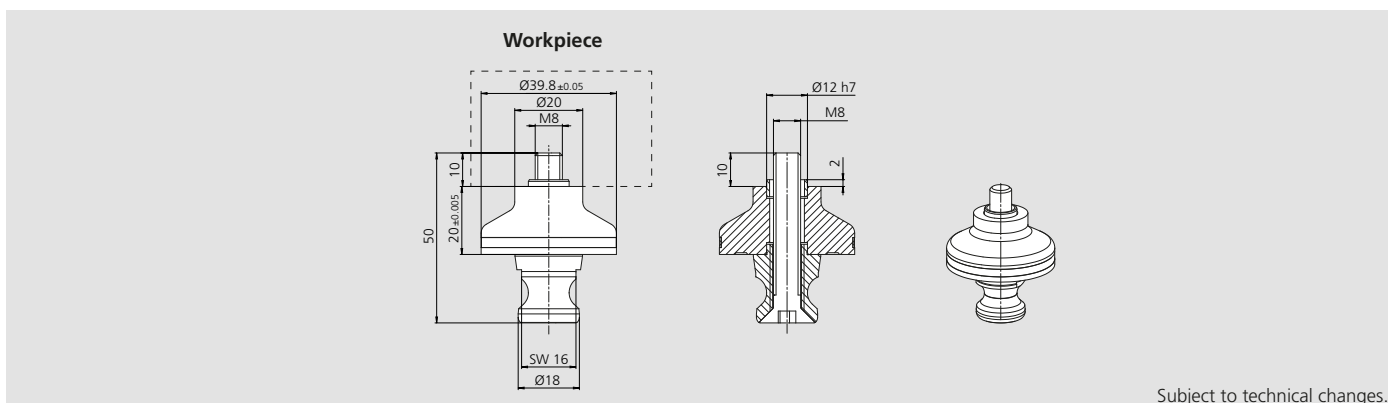
Clamping pin	Id. No.
Type A	460399

Clamping pin for WPS 080 M10



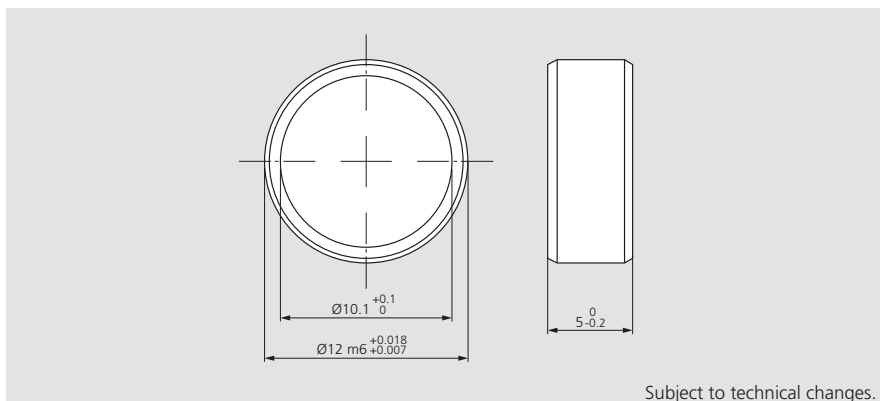
Clamping pin	Id. No.
for WPS 080	467008

Reduction D20 for WPS Mini



Reduction Thread [M]	Id. No.
M8 Type A	Height 20 mm 460487

Center pin



Center pin	Id. No.
For WPS 080	209223