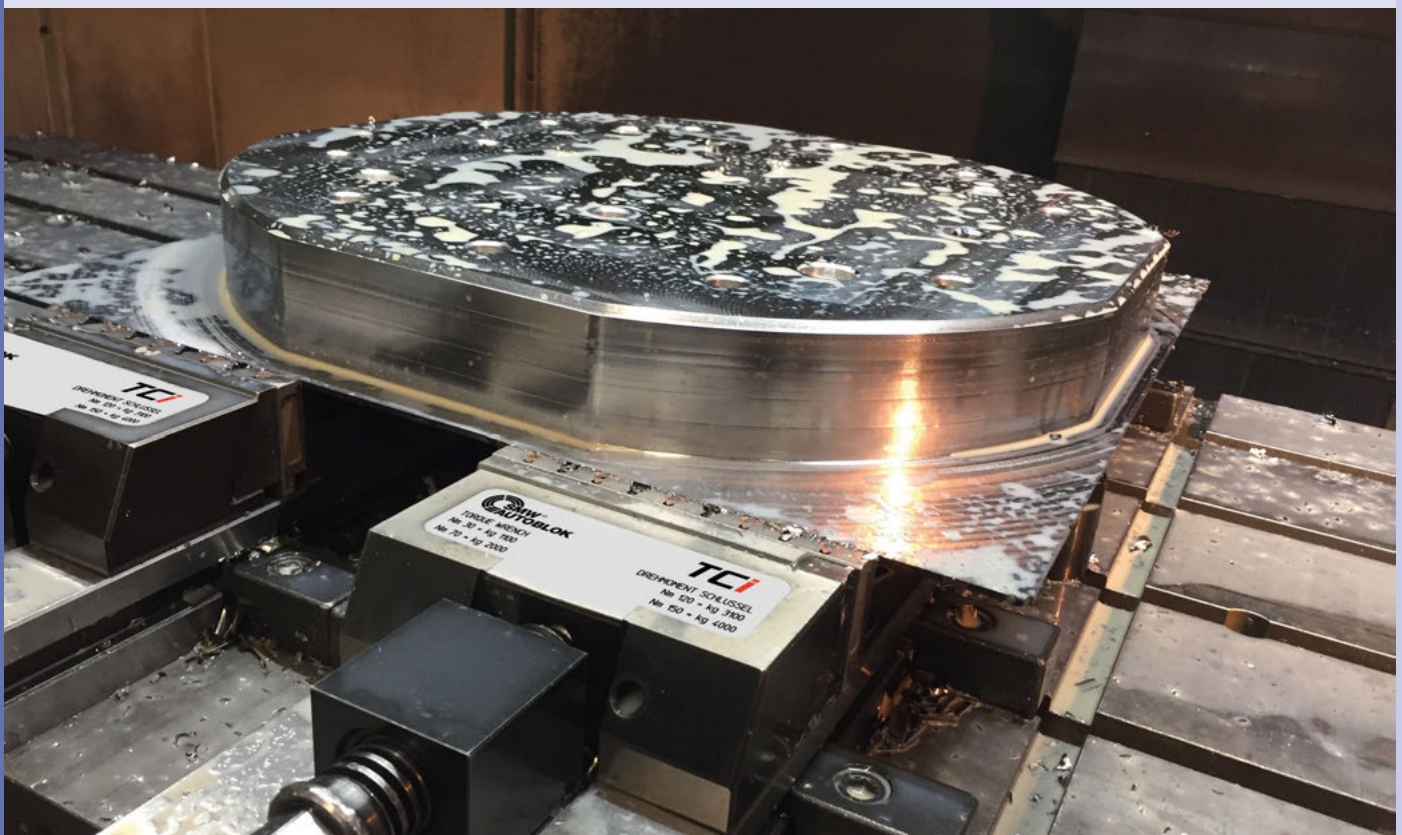


Precision machine vises from SMW-AUTOBLOK

Advantages:

- High constant clamping forces
- Maximum rigidity of the body
- Highest precision and accuracy
- Interfaces for zero point clamping system APS / WPS / ZeroAct
- Economic efficiency and flexibility

High precision vises from SMW-AUTOBLOK ensures highest process reliability while machining and best handling. The large range of accessories guarantees the flexible use of the vises. The use of SinterGrip inserts allow lowest clamping depths without pre-marking and is ideal for OP 10 operations.



Precision machine vises



Page 268

TCi

Precision bench vise

- Quick pre-positioning for the movable jaw
- Pull down jaws with 1 serrated clamping side
- Jaws for SinterGrip clamping
- Parallels quick change system CLAK
- Wide range of standard accessories
- Interface Zero point clamping system (optional)

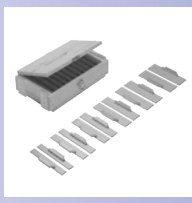


Page 283

MCI

Precision bench vise

- Quick pre-positioning for the movable jaw
- Pull down jaws
- Jaws for SinterGrip clamping
- Parallels quick change system CLAK
- No side mounting possible
- Interface Zero point clamping system (optional)



Page 295

CLAK System

Parallels

- Parallels for quick change systems
- Suitable for TCI and MCI vises

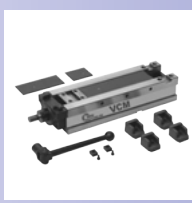


Page 300

TTi-2G

NC clamping vise

- Mechanical precise power transmitter
- Low maintenance sealed spindle
- Easy and quick cleaning
- Exact clamping force pre-adjustment (up to 11 steps)
- Standard jaw interface (Allmatic-interchangeable)
- Interface zero point clamping system



Page 308

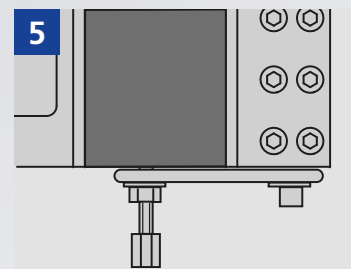
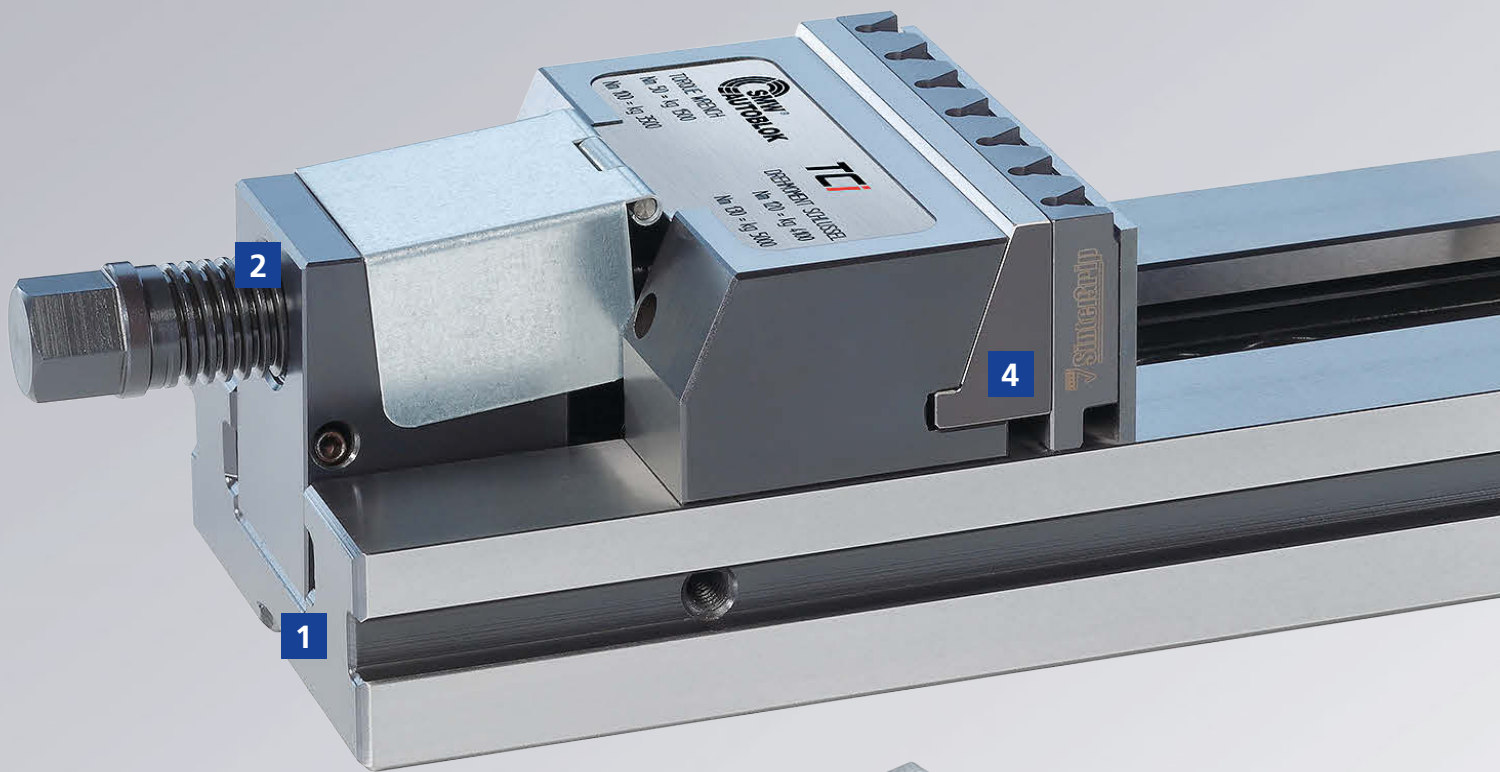
VCM

NC clamping vise without power transmitter

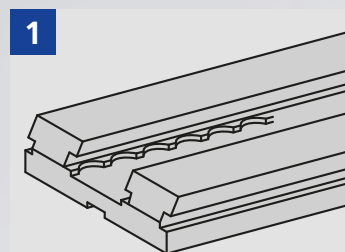
- High clamping forces
- Easy and quick cleaning
- Huge range of accessories

TCi

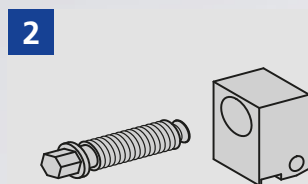
Precision bench vise



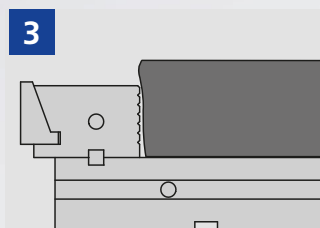
Workpiece stop



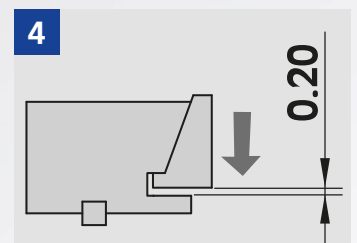
Quick positioning of the movable jaw



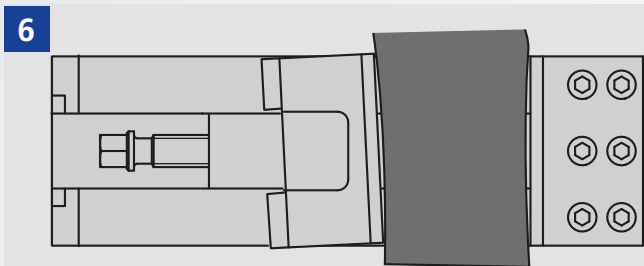
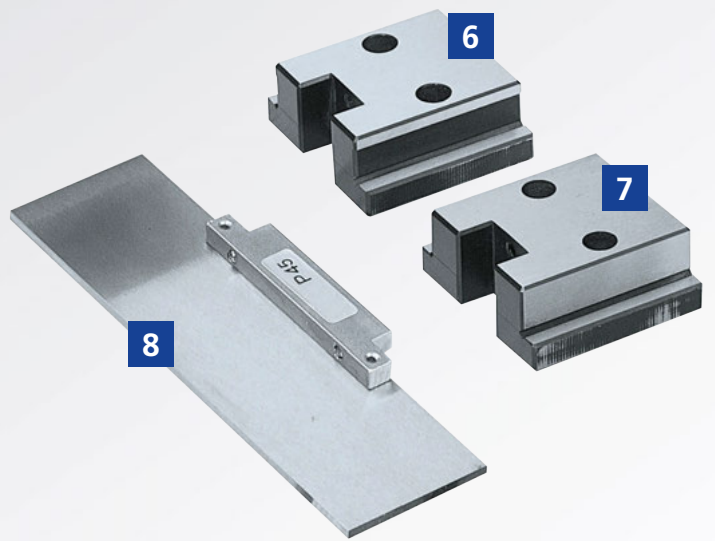
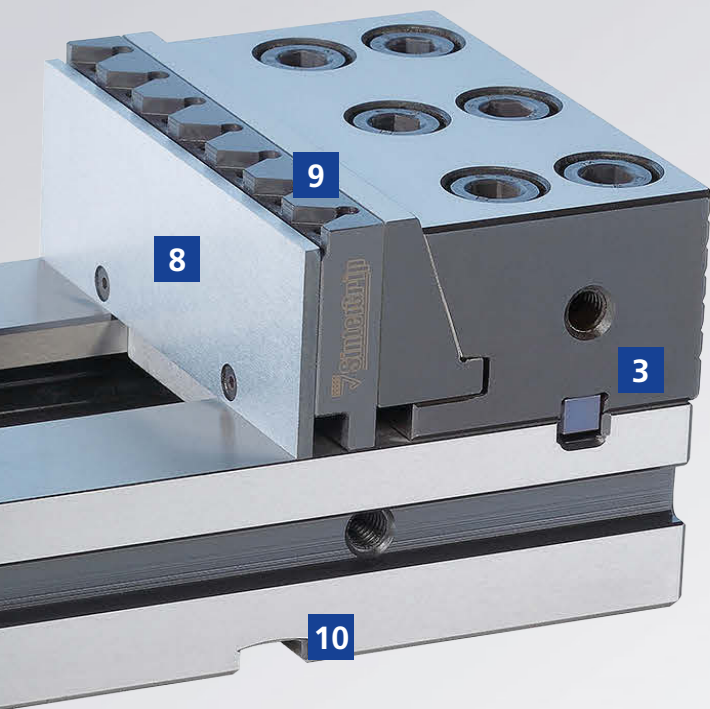
Block for clamping screw



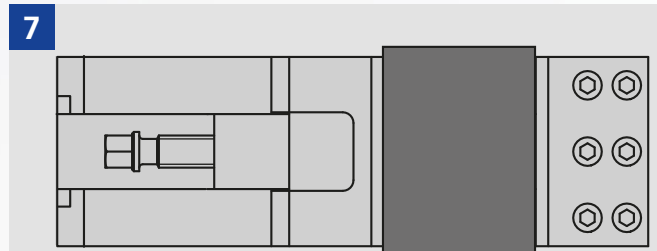
Fixed support turned of 180° (grooved part)



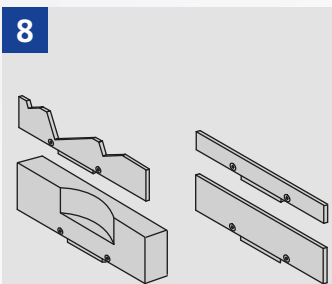
Pull-down jaws (Pull-down lockable)



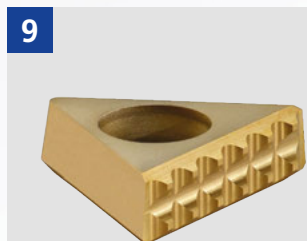
6 Floating slide-way raw workpieces



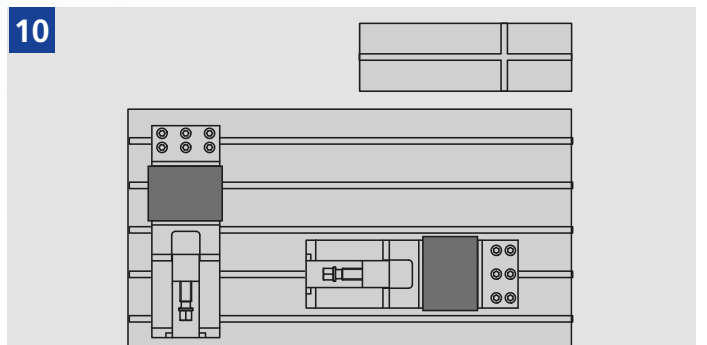
7 Rigid slide-way for finished workpieces



8 CLAK Quick change system for parallels



9 Jaws for SinterGrip clamping inserts



10 Precise T-slots for the assembling on the machine table by using positioning keys

- Quick positioning for the jaw
- Pull-down jaws with SinterGrip

Application/customer benefits

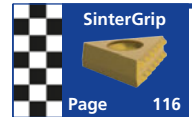
- High precision bench vise
- Quick positioning for the movable jaw
- Pull-down jaws including the possibility to use them without pull down effect for OP 10 operations
- Easy and quick cleaning possible
- Maximum flexibility due to the wide range of accessories
- Tolerances according to JIS standards

Technical features

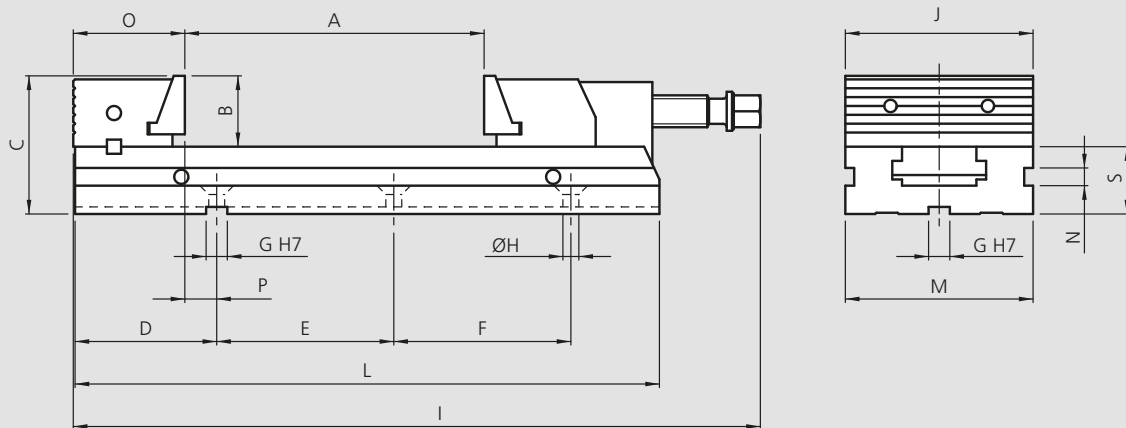
- 3 different jaw sizes
- Pull-down jaws (0.2 mm), 180° turned with serrated clamping side for OP 10
- Parallel stripes with quick change „CLAK-System“ see page 295
- Optional: Interface for zero point clamping systems APS / WPS / ZeroAct (on request)

Standard equipment

TCi precision bench vise with clamping wrench, pull-down jaws, jaws for SinterGrip clamping inserts, workstop, protection cover for spindle, parallels with quick change „CLAK-System“, floating slide-ways, 1 pair positioning keys, transport box



Page 116



Subject to technical changes.

Order review

Type	Id. No.	A [mm]	B [mm]	C [mm]	D [mm]	E [mm]	F [mm]	G [mm]	H [mm]	I [mm]	J [mm]	L [mm]	M [mm]	N [mm]	O [mm]	P [mm]	S [mm]	Weight [kg]
TCi 110 x 100	77580101	100	40	78	80	150	-	12	9	338	110	280	110	10	63	18	38	11.5
TCi 110 x 150	77580102	150	40	78	80	100	100	12	9	388	110	330	110	10	63	18	38	12.5
TCi 150 x 200	77580201	200	50	98	114	200	-	18	12.5	481	150	413	150	13	85	30	48	27
TCi 150 x 250	77580202	250	50	98	114	100	150	18	12.5	531	150	463	150	13	85	30	48	29
TCi 150 x 300	77580203	300	50	98	114	100	100	18	12.5	588	150	520	150	13	85	30	48	31.5
TCi 200 x 300	77580302	300	70	138	149	200	200	18	12.5	697	200	610	200	15.5	123	27	68	78
TCi 200 x 400	77580303	400	70	138	149	150	150	18	12.5	797	200	710	200	15.5	123	27	68	86

Special sizes on request.

- Quick positioning for the jaw
- Extra long clamping range



Application/customer benefits

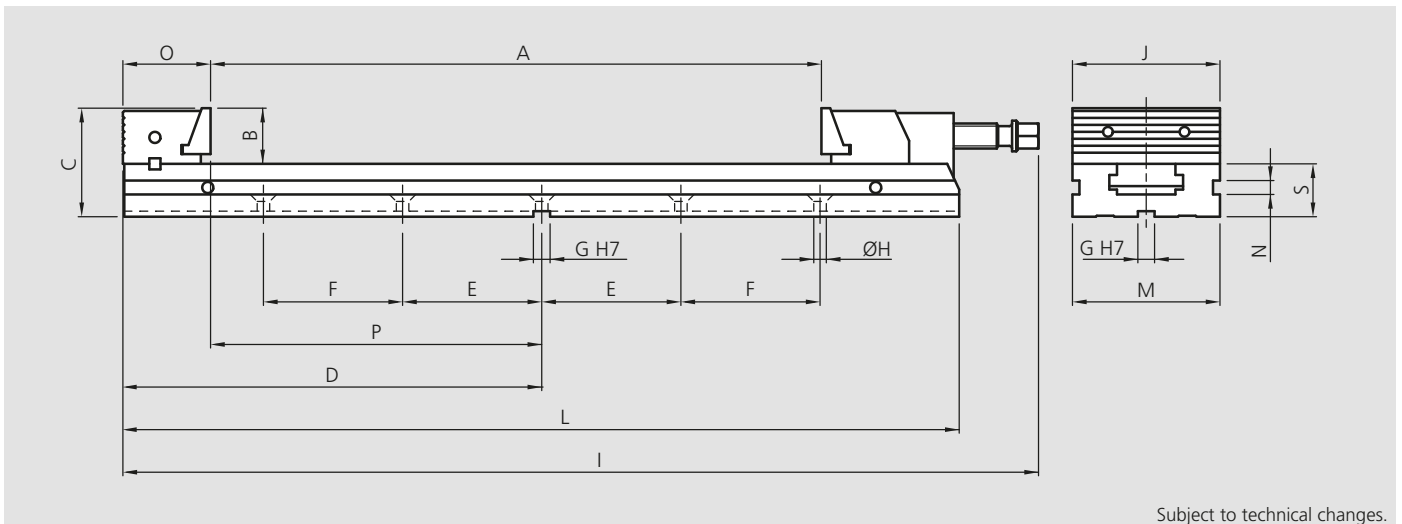
- High precision bench vise in extra long version
- Quick positioning for the movable jaw
- Pull-down jaws including the possibility to use them without pull down effect for OP 10 operations
- Easy and quick cleaning possible
- Maximum flexibility due to the wide range of accessories

Technical features

- 2 different jaw sizes
- Pull-down jaws (0.2 mm), 180° turned with serrated clamping side for OP 10
- Parallel stripes with quick change „CLAK-System“ see page 295
- Optional: interface for zero point clamping systems APS / WPS / ZeroAct (on request)

Standard equipment

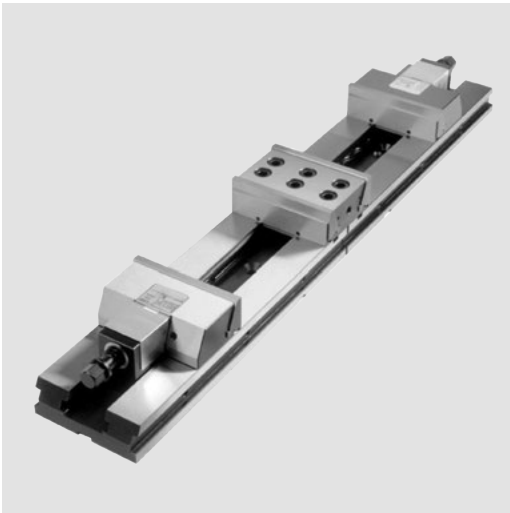
TCi-XL precision bench vise with clamping wrench, pull-down jaws, workstop, protection cover for spindle, parallels with quick change „CLAK-System“, floating slide-ways, 1 pair positioning keys, transport box



Order review

Type	Id. No.	A [mm]	B [mm]	C [mm]	D [mm]	E [mm]	F [mm]	G [mm]	H [mm]	I [mm]	J [mm]	L [mm]	M [mm]	N [mm]	O [mm]	P [mm]	S [mm]	Weight [kg]
TCi-XL 110 x 425	77580104	425	40	78	300	100	100	12	9	658	110	600	110	10	63	238	38	18.2
TCi-XL 150 x 545	77580204	545	50	98	379	100	150	18	12.5	825	150	758	150	13	85	298	48	40.0
TCi-XL 150 x 665	77580205	665	50	98	439	100	200	18	12.5	946	150	878	150	13	85	355	48	44.7

- Quick positioning for the jaw
- Double clamping system



Application/customer benefits

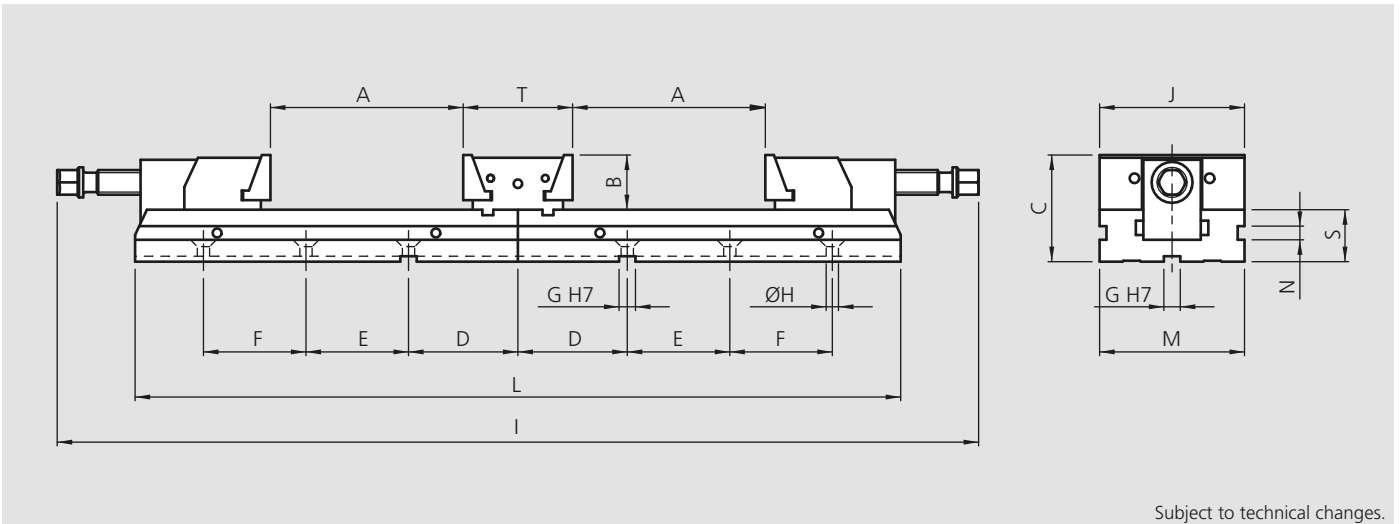
- High precision bench vise with double clamping system
- Quick positioning for the movable jaw
- Pull-down jaws including the possibility to use them without pull down effect for OP 10 operations
- Easy and quick cleaning possible
- Maximum flexibility due to the wide range of accessories

Technical features

- 3 different jaw sizes
- Pull-down jaws (0.2 mm), 180° turned with serrated clamping side for OP 10
- Parallel stripes with quick change „CLAK-System“ see page 295
- Optional: interface for zero point clamping systems APS / WPS / ZeroAct (on request)

Standard equipment

TCi-DC precision bench vise with clamping wrench, pull-down jaws, workstop, protection cover for spindle, parallels with quick change „CLAK-System“, floating slide-ways, 1 pair positioning keys, transport box



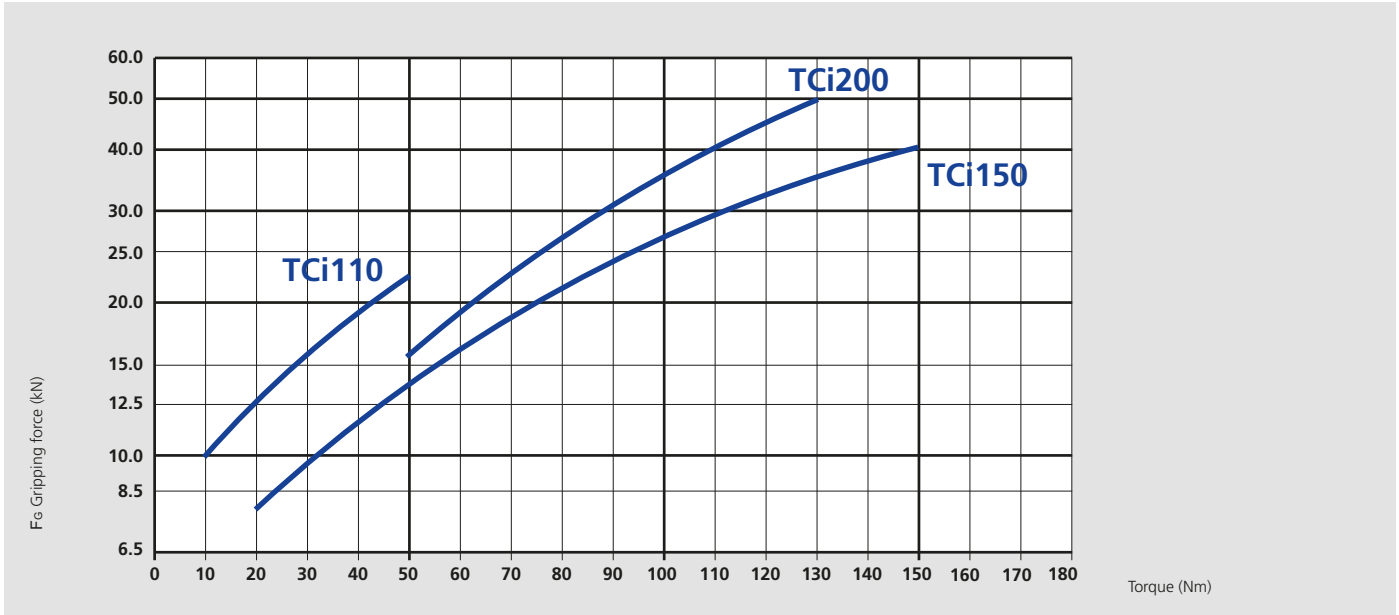
Subject to technical changes.

Order review

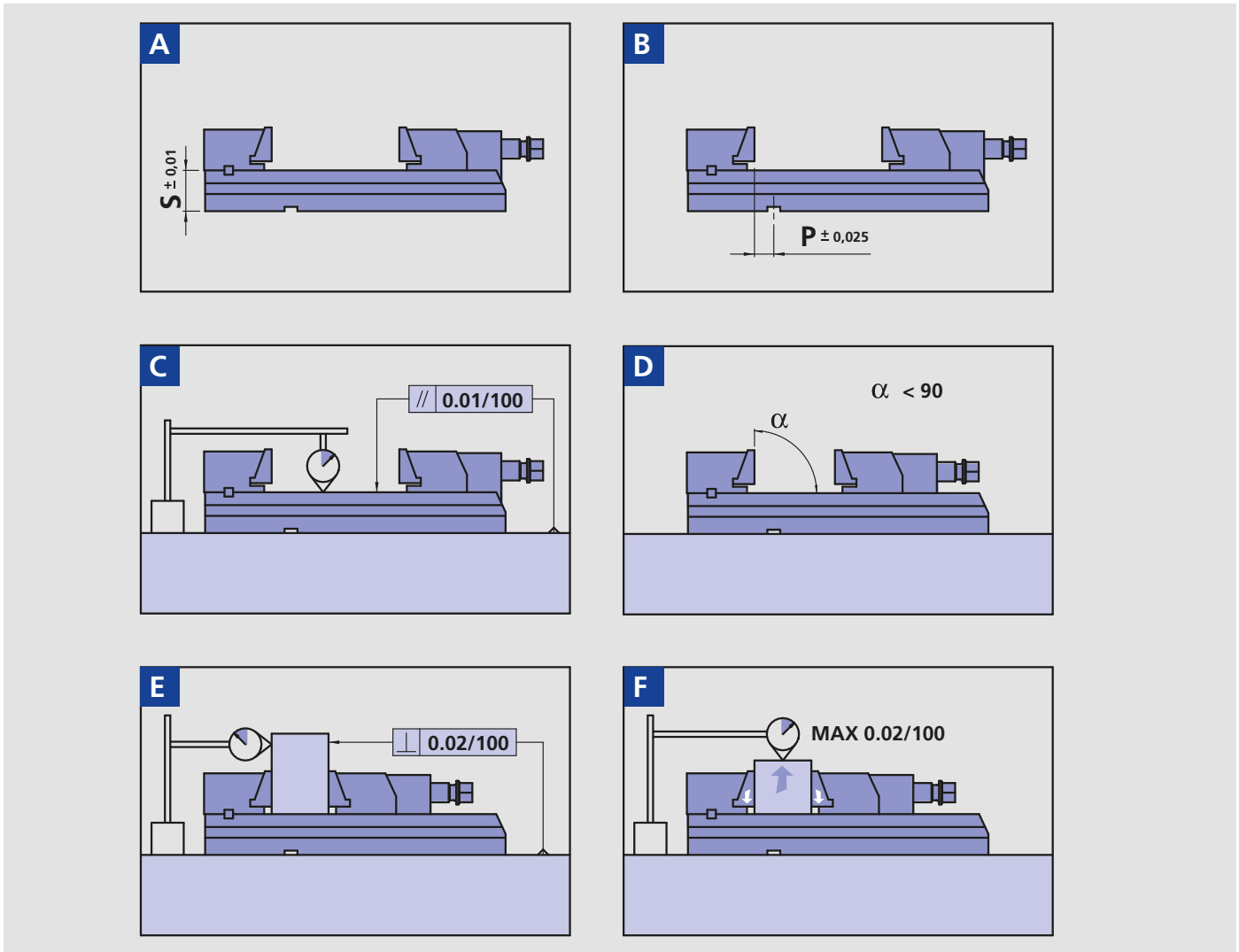
Type	Id. No.	A [mm]	B [mm]	C [mm]	D [mm]	E [mm]	F [mm]	G [mm]	H [mm]	I [mm]	J [mm]	L [mm]	M [mm]	N [mm]	S [mm]	T [mm]	Weight [kg]
TCi-DC 110 x 130	77581101	130	40	78	80	150	-	12	9	676	110	56	110	10	38	80	22
TCi-DC 110 x 180	77581102	180	40	78	80	100	100	12	9	776	110	660	110	38	80	24	24
TCi-DC 150 x 230	77581201	230	50	98	116	200	-	18	12.5	966	150	830	150	13	48	108	52
TCi-DC 150 x 280	77581202	280	50	98	116	100	150	18	12.5	1066	150	930	150	13	48	108	56
TCi-DC 200 x 330	77581302	330	70	138	150	200	200	18	12.5	1394	200	1222	200	15.5	68	194	144

- Clamping force diagram
- Tolerances

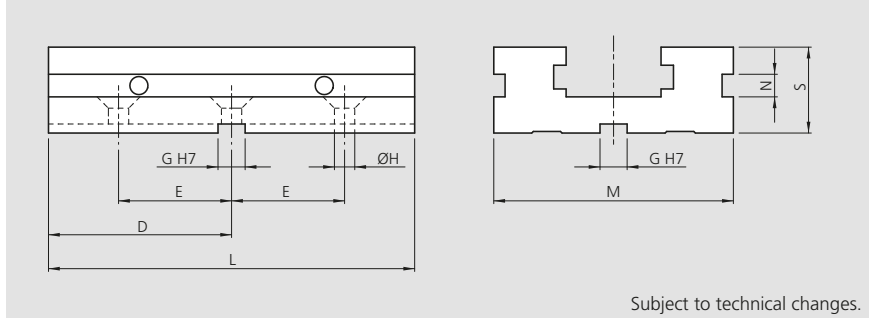
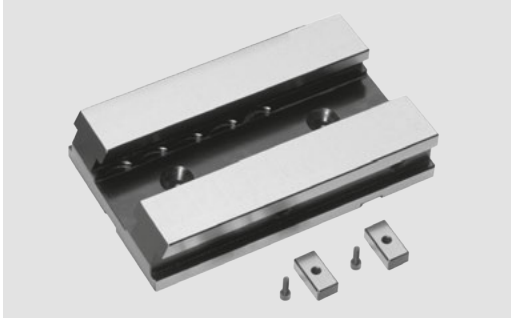
Clamping force diagram



Form, position and dimensional tolerances for all clamping vises TCI



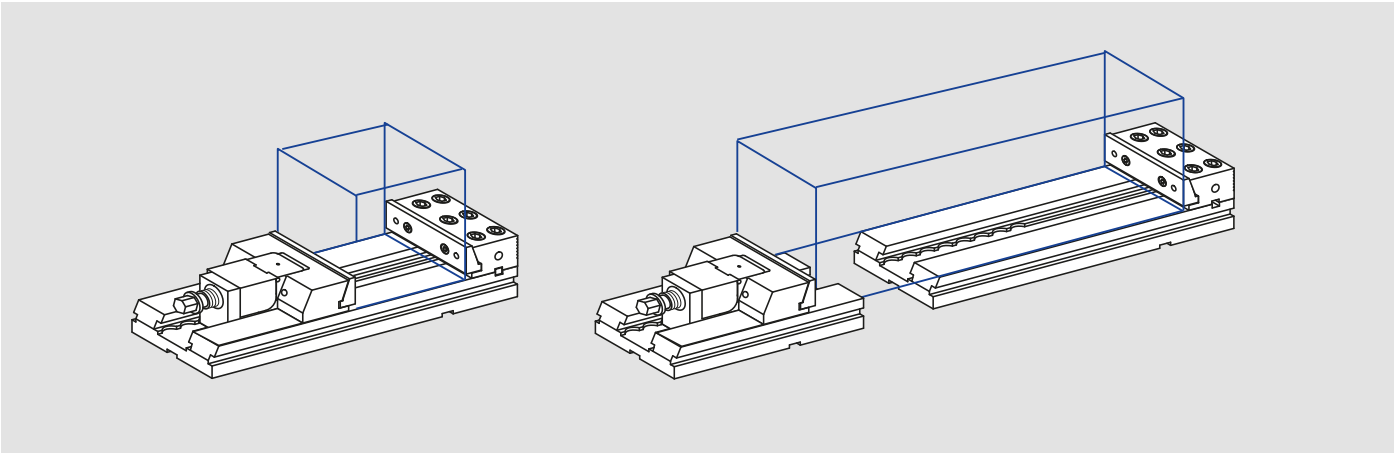
TCi extension element with pair of positioning keys



Subject to technical changes.

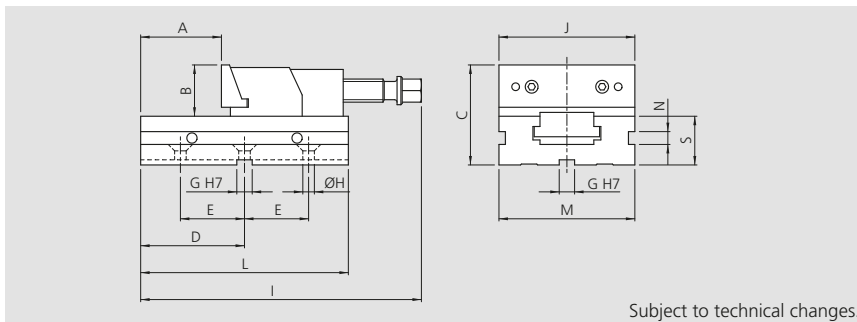
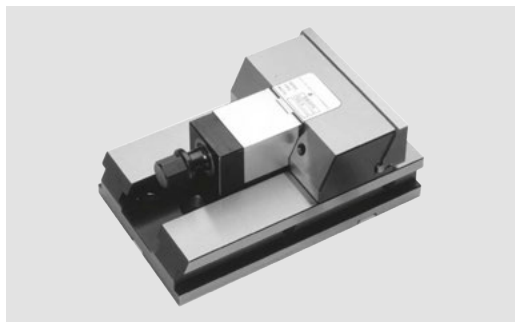
Type	Id. No.	D [mm]	E [mm]	G [mm]	H [mm]	L [mm]	M [mm]	N [mm]	S [mm]	Weight [kg]
TCi-110	58011700	81	50	12	9	162	110	10	38	3.5
TCi-150	58021700	114	75	18	12.5	228	150	13	48	9
TCi-200	58031700	150	100	18	12.5	300	200	15.5	68	22

Application examples



- Clamping unit, fix jaw and double jaw single unit
- Flexible application

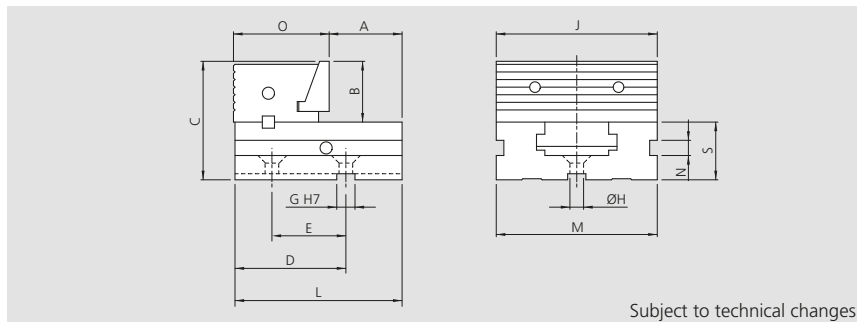
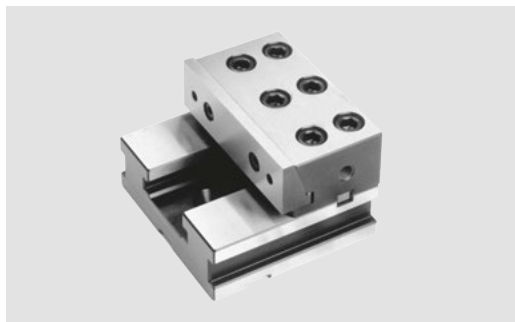
TCi Clamping unit for flexible application



Subject to technical changes.

Type	Id. No.	A [mm]	B [mm]	C [mm]	D [mm]	E [mm]	G [mm]	H [mm]	I [mm]	J [mm]	L [mm]	M [mm]	N [mm]	S [mm]	Weight [kg]
TCi-110	58017110	60	40	78	81	50	12	9	220	110	162	110	10	38	6.2
TCi-150	58027110	100	50	98	114	75	18	12.5	295	150	228	150	13	48	15.1
TCi-200	58037110	120	70	138	150	100	18	12.5	390	200	300	200	15.5	68	39.2

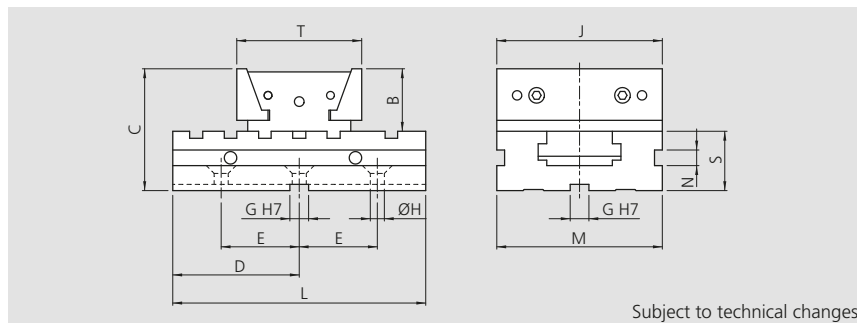
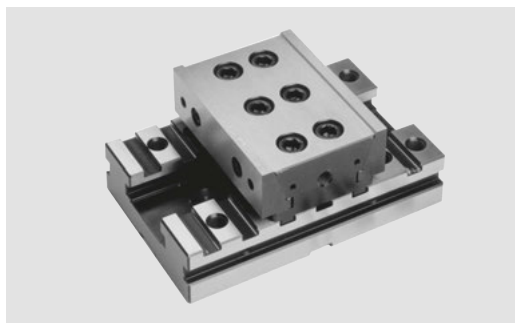
TCi fix jaw unit for flexible application



Subject to technical changes.

Type	Id. No.	A [mm]	B [mm]	C [mm]	D [mm]	E [mm]	G [mm]	H [mm]	J [mm]	L [mm]	M [mm]	N [mm]	O [mm]	S [mm]	Weight [kg]
TCi-110	58017010	58	40	78	80	50	12	9	110	120	110	10	63	38	4
TCi-150	58027010	81	50	98	114	75	18	12.5	150	165	150	13	85	48	9
TCi-200	58037010	82	70	138	149	100	18	12.5	200	205	200	15.5	123	68	28

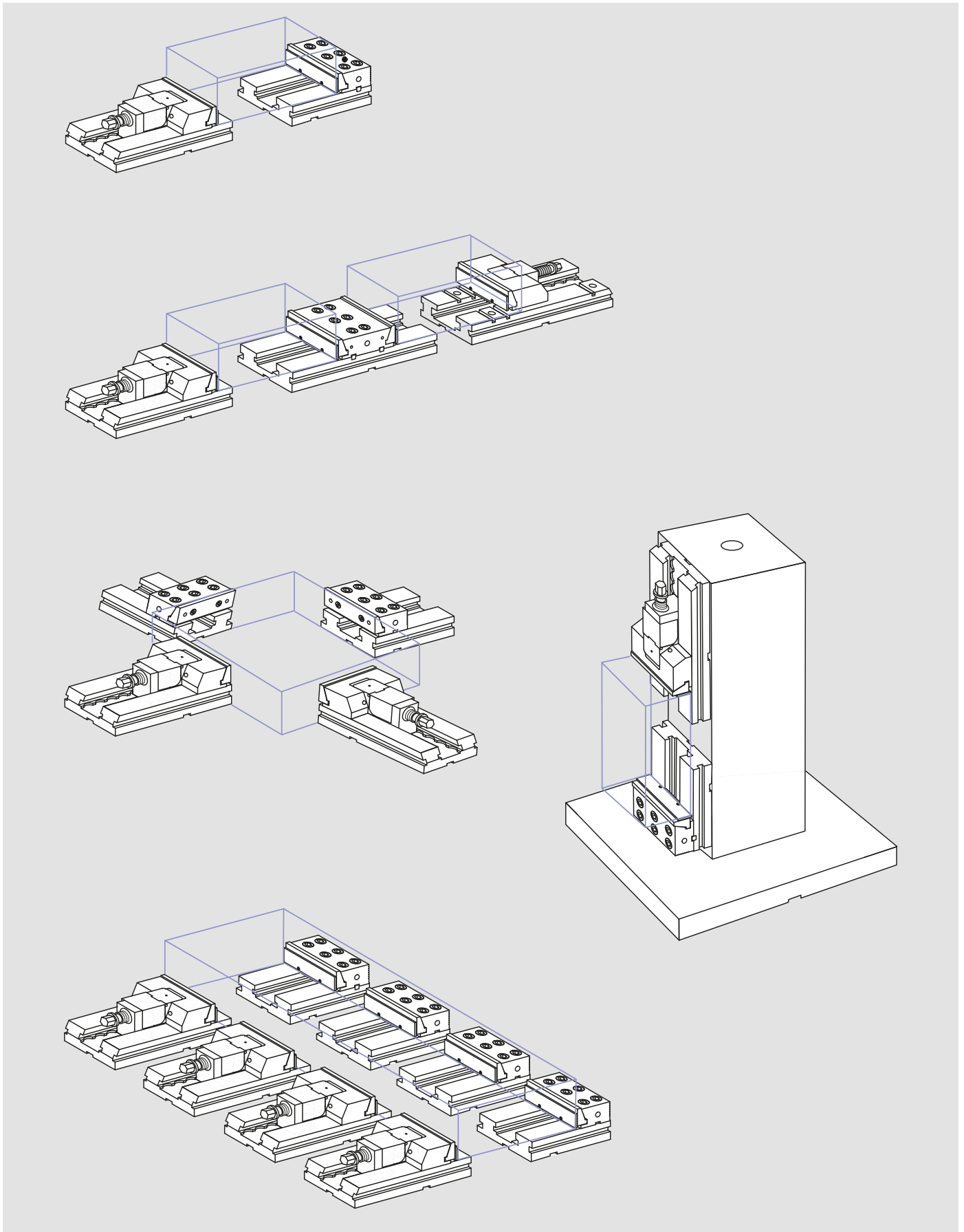
TCi double jaw unit for flexible application



Subject to technical changes.

Type	Id. No.	B [mm]	C [mm]	D [mm]	E [mm]	G [mm]	H [mm]	J [mm]	L [mm]	M [mm]	N [mm]	S [mm]	T [mm]	Weight [kg]
TCi-110	58117010	40	78	81	50	12	9	110	162	110	10	38	80	5.6
TCi-150	58127010	50	98	114	75	18	12.5	150	228	150	13	48	108	13.5
TCi-200	58137010	70	138	150	100	18	12.5	200	300	200	15.5	68	194	34.7

TCi clamping units for flexible applications



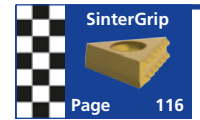
- Accessories
- Jaws

TCi jaws for SinterGrip clamping inserts



Type	Id. No.
TCi 110	58451159
TCi 150	58451219
TCi 200	58451419

Consisting of:
2 pieces jaws
without SinterGrip Inserts



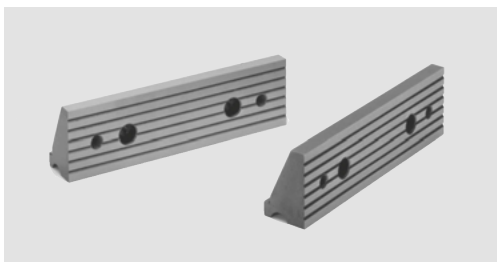
TCi pull-down jaws smooth



Type	Id. No.
TCi 110	58010409
TCi 150	58020409
TCi 200	58030409

Consisting of:
2 pieces jaws

TCi pull-down jaws serrated



Type	Id. No.
TCi 110	58014409
TCi 150	58024409
TCi 200	58034409

Consisting of:
2 pieces jaws

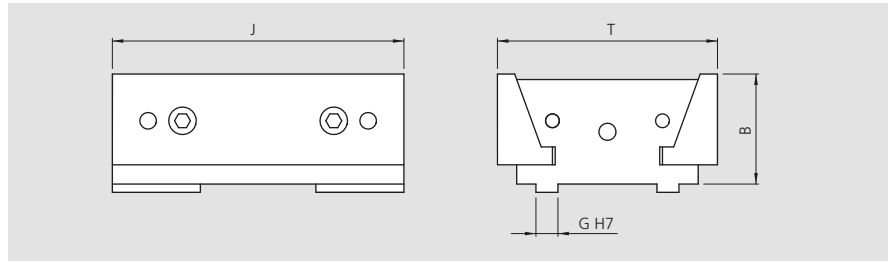
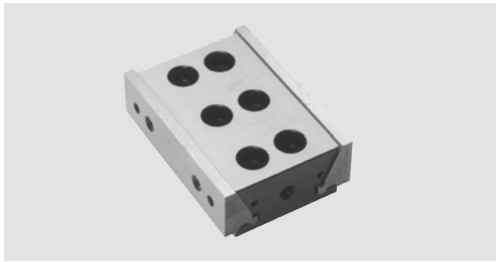
TCi torque wrench



Type	Id. No.
TCi 110	51501001
TCi 150	51501002
TCi 200	51501003

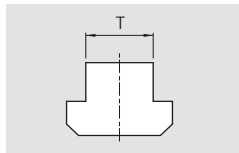
- Accessories
- Mounting

TCi fixed jaw carrier for double clamping (extension)



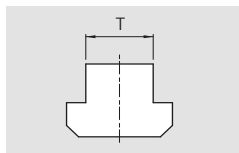
Type	Id. No	B [mm]	G [mm]	J [mm]	T [mm]	Weight [kg]
TCi 110	58117210	40	8	110	80	2.2
TCi 150	58127210	50	12	150	108	5
TCi 200	58137210	70	14	200	194	11.6

Clamps (1 pair) incl. screw and T-nut



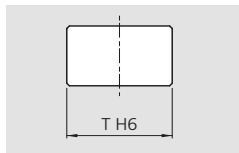
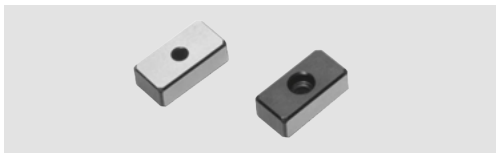
Type	Id. No. / groove width					
	12 mm	14 mm	16 mm	18 mm	20 mm	22 mm
TCi 110	58012792	58012793	58012794	58012795	58012796	58012797
TCi 150	58022792	58022793	58022794	58022795	58022796	58022797
TCi 200	58032792	58032793	58032794	58032795	58032796	58032797

T-nuts (1 pair) incl. screw



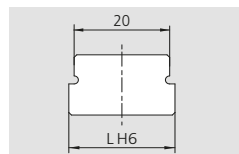
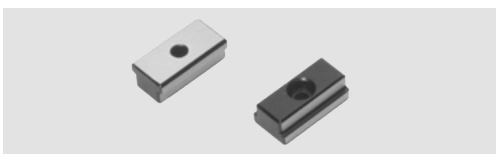
Type	Id. No. / groove width					
	12 mm	14 mm	16 mm	18 mm	20 mm	22 mm
TCi 110	58012592	58012593	58012594	58012595	58012596	58012597
TCi 150	58022592	58022593	58022594	58022595	58022596	58022597
TCi 200	58032592	58032593	58032594	58032595	58032596	58032597

Key way with standard dimensions (1 pair)



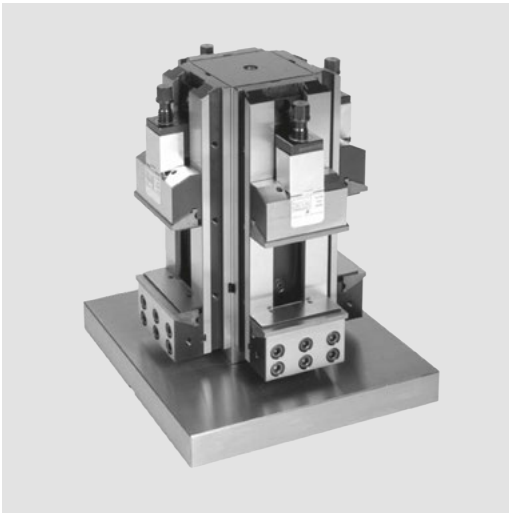
Type	Id. No. / groove width 12h6 mm
TCi 110	58011392
TCi 150	58021395
TCi 200	58021395

Key way with special dimensions (1 pair)



Type	Id. No. / groove width					
	12h6 mm	14h6 mm	16h6 mm	18h6 mm	20h6 mm	22h6 mm
TCi 110	58011392	58011393	58011394	58011395	58011396	58011397
TCi 150	58021392	58021393	58021394	58021395	58021396	58021397
TCi 200	58021392	58021393	58021394	58021395	58021396	58021397

- Quick positioning for the jaw
- Maximum flexibility



Application/customer benefits

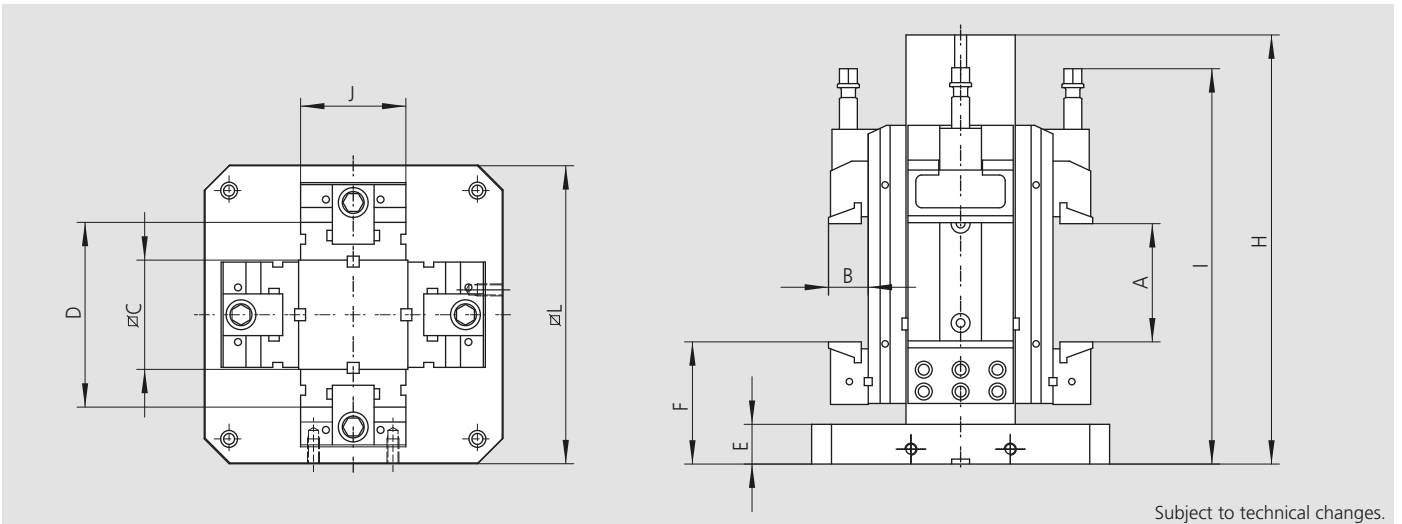
- Steel tombstone ready to use on horizontal machining centres, including 4 TCi vices
- Quick positioning for the movable jaw
- Maximum flexibility due to the wide range of accessories

Technical features

- 2 different jaw sizes
- Pull-down jaws (0.2 mm)
- Parallel stripes with quick change „CLAK-System“ see page 295
- Interface for JIS pallets and for zero point clamping systems APS / WPS / ZeroAct (on request)

Standard equipment

Vertical clamping system complete with: 4 clamping equipment TCi, 1 column, 1 base for vertical system TCi, 4 pairs of SinterGrip jaws, 4 pairs of CLAK parallels, 4 covers for protection of the screws 4 rigid slide-ways, 4 floating slide-ways (for raw workpieces), 4 workstops, 4 wrenches, eye bolt for lifting, transport box



Subject to technical changes.

Order review

Type	Id. No.	A [mm]	B [mm]	C [mm]	D [mm]	E [mm]	F [mm]	H [mm]	I [mm]	J [mm]	L [mm]	Weight [kg]
MVS-TCi 110x100	77582111	100	40	110	186	40	123	391	400	110	300	108
MVS-TCi 110x150	77582112	150	40	110	186	40	123	391	450	110	300	112
MVS-TCi 150x200	77582221	200	50	150	246	40	151	580	550	150	400	255
MVS-TCi 150x250	77582222	250	50	150	246	40	151	580	600	150	400	263
MVS-TCi 150x300	77582223	300	50	150	246	40	151	580	655	150	400	273
MVS-TCi 150x200	77582231	200	50	150	246	40	151	580	550	150	500	282
MVS-TCi 150x250	77582232	250	50	150	246	40	151	580	600	150	500	290
MVS-TCi 150x300	77582233	300	50	150	246	40	151	580	655	150	500	300
MVS-TCi 200x300	77582332	300	70	200	336	40	173	661	750	200	500	580

■ Steel tombstone



Application/customer benefits

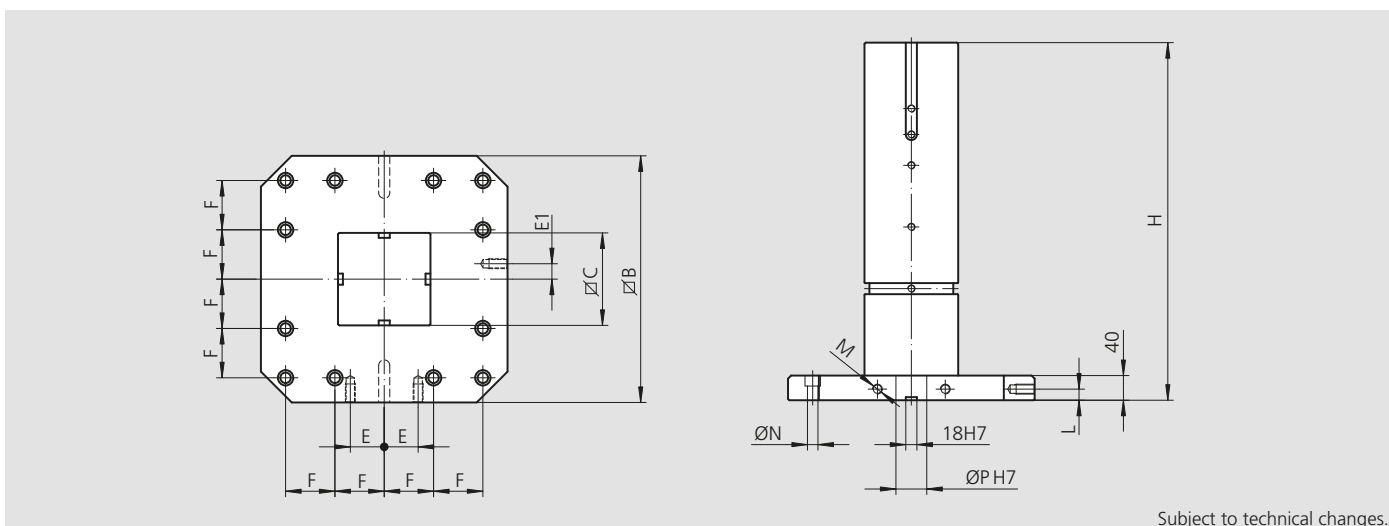
- Steel tombstone ready to use on horizontal machining centres

Technical features

- Interface for JIS pallets and for zero point clamping systems APS / WPS / ZeroAct

Standard equipment

Tombstone



Subject to technical changes.

Order review

Type	Id. No.	B [mm]	C [mm]	E [mm]	E1 [mm]	F [mm]	H [mm]	L [mm]	M [mm]	N [mm]	P [mm]	Weight [kg]
MVS-TCi 110	58218010	300	110	40	0	125	391	15	12	13	25	57
MVS-TCi 150	58228020	400	150	55	25	80	580	18	16	17	50	142
MVS-TCi 150	58228030	500	150	75	25	100	580	18	16	17	50	169
MVS-TCi 200	58238030	500	200	75	25	100	661	18	16	17	50	266

Insert for vertical use



Type	Id. No.
MVS-TCi 110	58213300
MVS-TCi 150	58223300
MVS-TCi 200	58233300

- Quick positioning for the jaw
- Maximum flexibility



Application/customer benefits

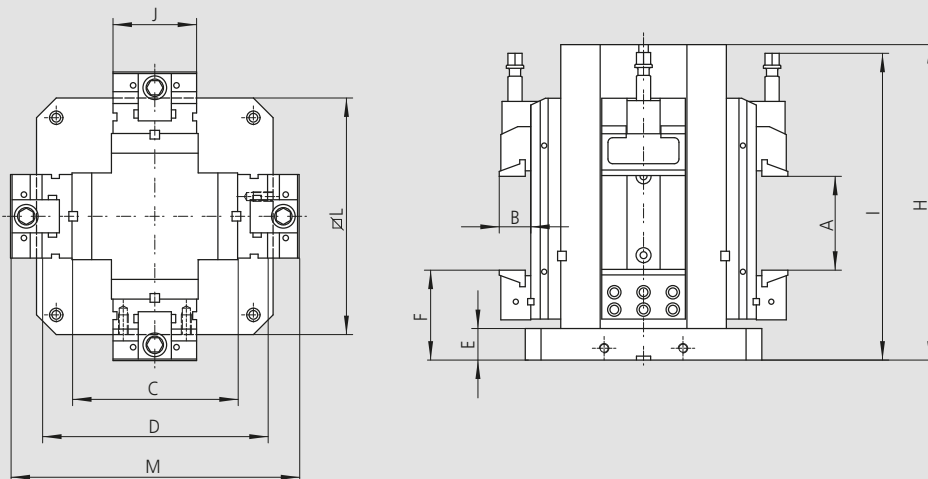
- Steel cross tombstone ready to use on horizontal machining centres, including 4 TCi vises
- Quick positioning for the movable jaw
- Maximum flexibility due to the wide range of accessories

Technical features

- 2 different jaw sizes
- Pull-down jaws (0.2 mm)
- Parallel stripes with quick change „CLAK-System“ see page 295
- Interface for JIS pallets and for zero point clamping systems APS / WPS / ZeroAct (on request)

Standard equipment

Vertical clamping system complete with: 4 clamping equipment TCi, 1 cross tombstone, 4 pairs of SinterGrip jaws, 4 pairs of CLAK parallels, 4 covers for protection of the screws, 4 rigid slide-ways, 4 floating slide-ways (for raw workpieces), 4 workstops, 4 wrenches, eye bolt for lifting, transport box

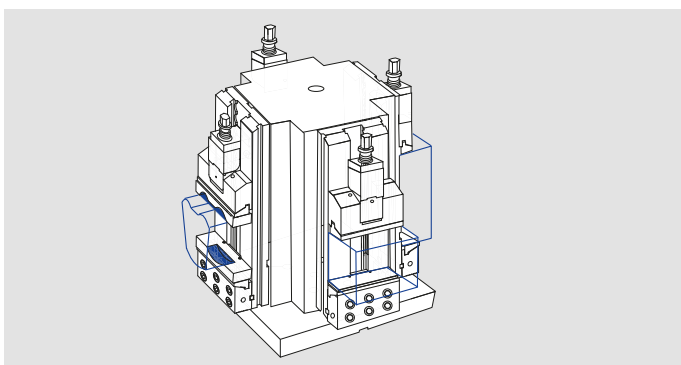


Subject to technical changes.

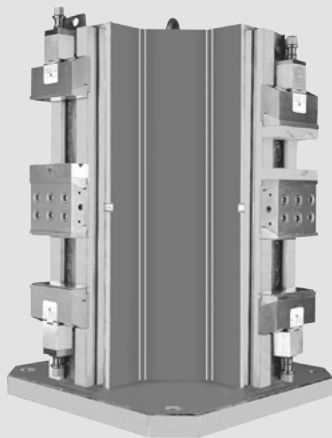
Order review

Type	Id. No.	A [mm]	B [mm]	C [mm]	D [mm]	E [mm]	F [mm]	H [mm]	I [mm]	J [mm]	L [mm]	M [mm]	Weight [kg]
VCS-TCi 110x100	77585111	100	40	210	286	40	114	382	390	110	300	366	121
VCS-TCi 110x150	77585112	150	40	210	286	40	114	382	440	110	300	366	125
VCS-TCi 150x200	77585221	200	50	300	396	40	145	580	545	150	400	496	320
VCS-TCi 150x250	77585222	250	50	300	396	40	145	580	595	150	400	496	328
VCS-TCi 150x300	77585223	300	50	300	396	40	145	580	652	150	400	496	338
VCS-TCi 150x200	77585231	200	50	300	396	40	145	580	545	150	500	496	348
VCS-TCi 150x250	77585232	250	50	300	396	40	145	580	595	150	500	496	356
VCS-TCi 150x300	77585233	300	50	300	396	40	145	580	652	150	500	496	366
VCS-TCi 200x300	77585342	300	70	350	486	45	182	670	760	200	630	626	675

Application examples



- Quick positioning for the jaw
- Maximum flexibility



Application/customer benefits

- Steel cross tombstone ready to use on horizontal machining centres, including 4 TCi vises
- Extra long clamping range
- Quick positioning for the movable jaw
- Maximum flexibility due to the wide range of accessories

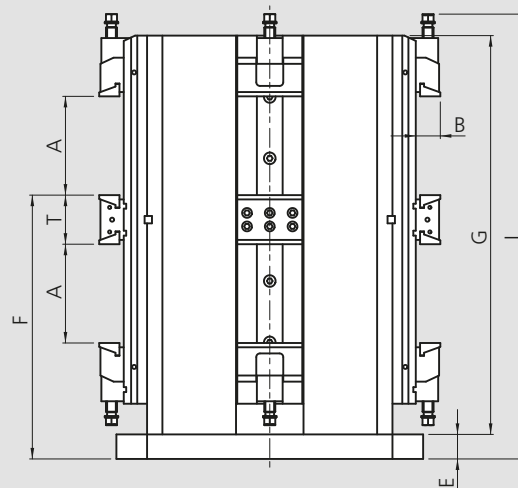
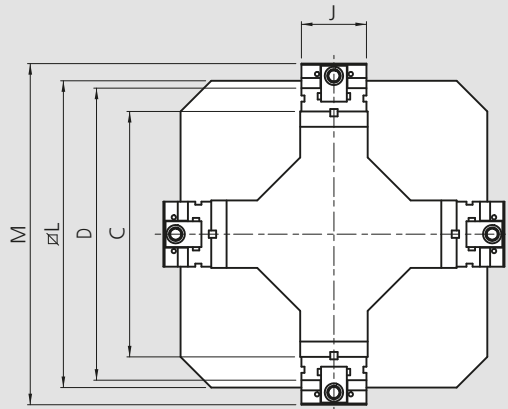
Technical features

- 3 different jaw sizes
- Pull-down jaws (0.2 mm), 180° turned with serrated clamping side for OP 10
- Parallel stripes with quick change „CLAK-System“ see page 295
- Interface for JIS pallets and for zero point clamping systems APS / WPS / ZeroAct (on request)

Standard equipment

Vertical clamping system complete with: 4 clamping equipment TCi-DC, 1 cross tombstone, 8 pairs of CLAK parallels, 8 covers for protection of the screws, 8 rigid slide-ways, 8 floating slide-ways (for raw workpieces), 8 workstops, 8 wrenches, eye bolt for lifting, transport box

Subject to technical changes.



Order review

Type	Id. No.	A [mm]	B [mm]	C [mm]	D [mm]	E [mm]	F [mm]	G [mm]	I [mm]	J [mm]	L [mm]	M [mm]	T [mm]	Weight [kg]
DVCS-TCi 110x155	77586101	155	40	400	476	40	430	650	725	110	500	556	80	352
DVCS-TCi 150x195	77586201	195	50	550	646	45	515	795	890	150	630	746	108	647

- Quick positioning for the jaw
- Maximum flexibility

Application/customer benefits

- High precision bench vise in extra long version
- Quick positioning for the movable jaw
- Pull-down jaws including the possibility to use them without pull down effect for OP 10 operations
- Easy and quick cleaning possible
- Maximum flexibility due to the wide range of accessories

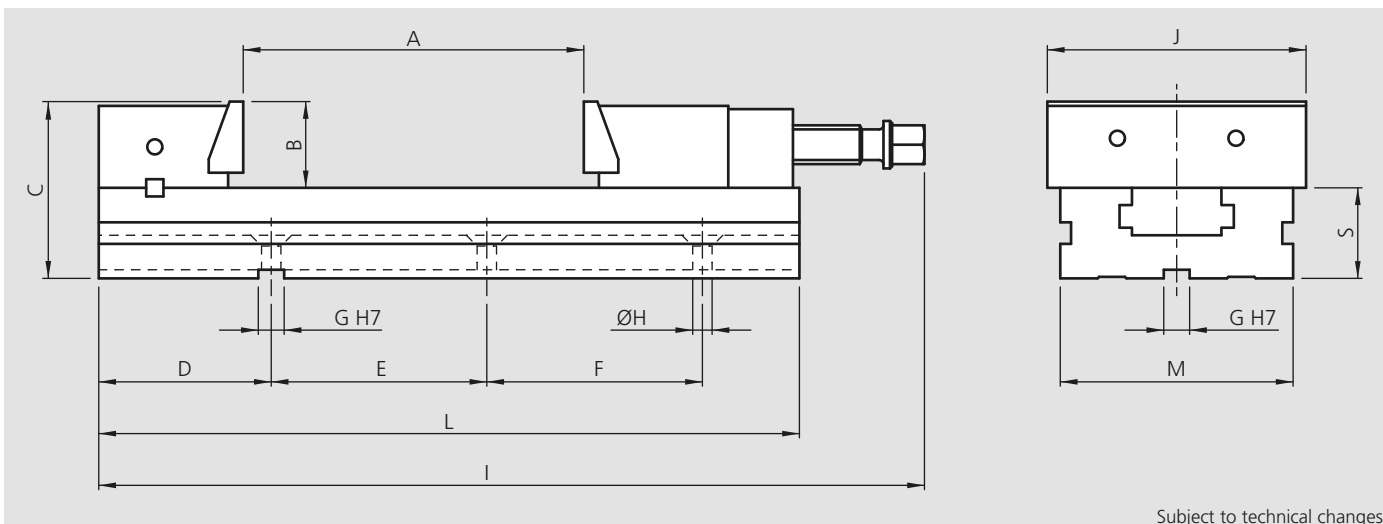
Technical features

- 2 different jaw sizes
- Pull-down jaws (0.2 mm)
- Parallel stripes with quick change „CLAK-System“ see page 295
- Optional: Interface for zero point clamping systems APS / WPS / ZeroAct (on request)
- No side mounting possible



Standard equipment

MCI precision bench vise with clamping wrench, pull-down jaws, jaws for SinterGrip clamping inserts, workstop, protection cover for spindle, parallels with quick change „CLAK-System“, 1 pair positioning keys, transport box



Subject to technical changes.

Order review

Type	Id. No.	A [mm]	B [mm]	C [mm]	D [mm]	E [mm]	F [mm]	G [mm]	H [mm]	I [mm]	J [mm]	L [mm]	M [mm]	O [mm]	S [mm]	Weight [kg]
MCI 150 x 200	77580601	200	50	102	120	200	-	18	12.5	482	150	415	128	85	52	25.5
MCI 150 x 250	77580602	250	50	102	120	100	100	18	12.5	532	150	465	128	85	52	57.5
MCI 150 x 300	77580603	300	50	102	120	100	100	18	12.5	587	150	520	128	85	52	30.4
MCI 200 x 300	77580701	300	70	136	150	150	150	18	12.5	656	200	570	168	109	66	66
MCI 200 x 400	77580702	400	70	136	150	200	200	18	12.5	756	200	670	168	109	66	68

- Quick positioning for the jaw
- Extra long clamping range



Application/customer benefits

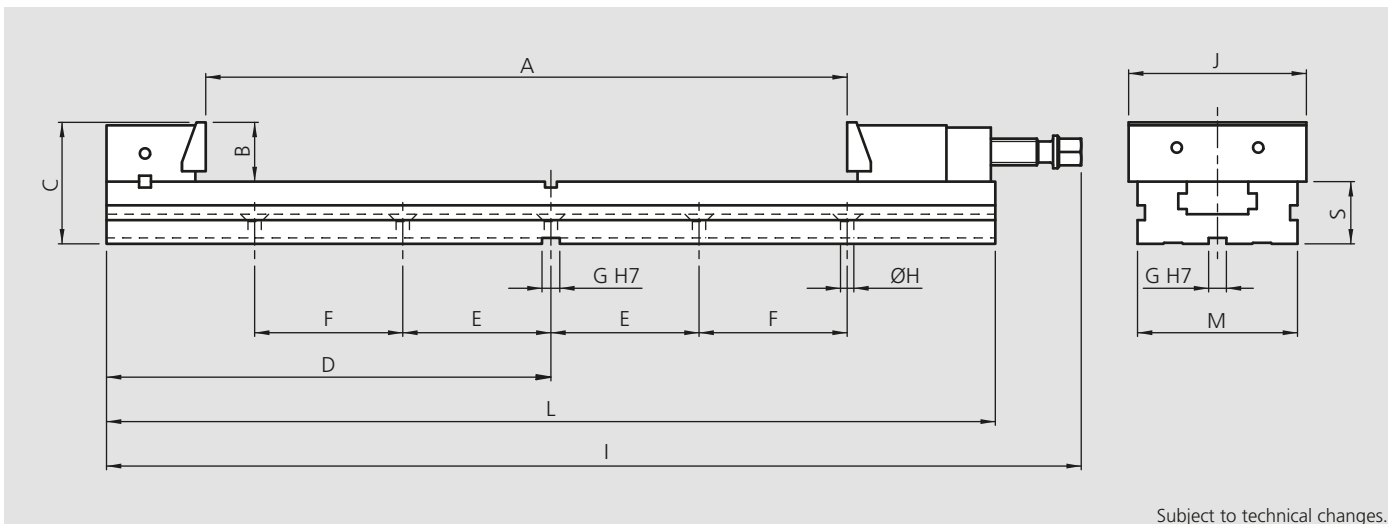
- High precision bench vise in extra long version
- Quick positioning for the movable jaw
- Pull-down jaws including the possibility to use them without pull down effect for OP 10 operations
- Easy and quick cleaning possible
- Maximum flexibility due to the wide range of accessories

Technical features

- Pull-down jaws (0.2 mm)
- Parallel stripes with quick change „CLAK-System“ see page 295
- Optional: interface for zero point clamping systems APS / WPS / ZeroAct (on request)

Standard equipment

MCI-XL precision bench vise with clamping wrench, pull-down jaws, workstop, protection cover for spindle, parallels with quick change „CLAK-System“, 1 pair positioning keys, transport box

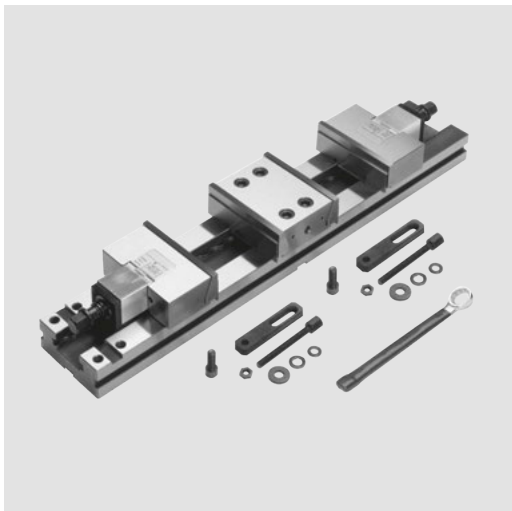


Subject to technical changes.

Order review

Type	Id. No.	A [mm]	B [mm]	C [mm]	D [mm]	E [mm]	F [mm]	G [mm]	H [mm]	I [mm]	J [mm]	L [mm]	M [mm]	S [mm]	Weight [kg]
MCI-XL 150x545	77580604	545	50	102	379	100	150	18	12.5	828	150	758	128	52	37
MCI-XL 150x655	77580605	655	50	102	439	100	200	18	12.5	938	150	878	128	52	41

- Quick positioning for the jaw
- Double clamping system



Application/customer benefits

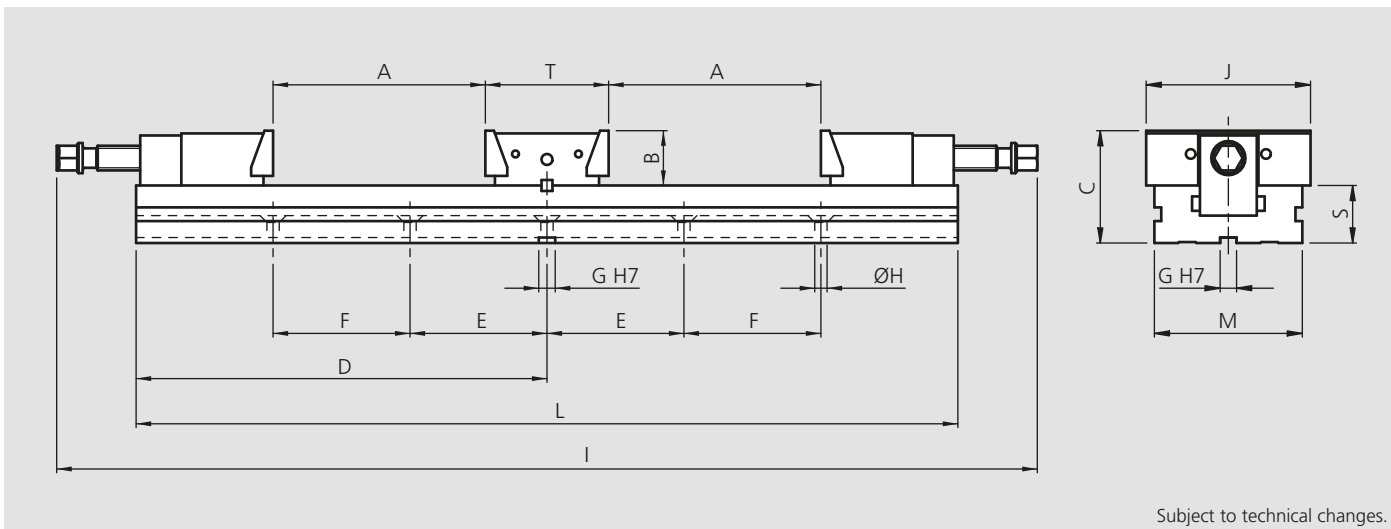
- High precision bench vise in extra long version
- Quick positioning for the movable jaw
- Pull-down jaws including the possibility to use them without pull down effect for OP 10 operations
- Easy and quick cleaning possible
- Maximum flexibility due to the wide range of accessories

Technical features

- Pull-down jaws (0.2 mm)
- Parallel stripes with quick change „CLAK-System“ see page 295
- Optional: Interface for zero point clamping systems APS / WPS / ZeroAct (on request)

Standard equipment

MCI-DC precision bench vise with clamping wrench, workstop, protection cover for spindle, parallels with quick change „CLAK-System“, 1 pair positioning keys, transport box

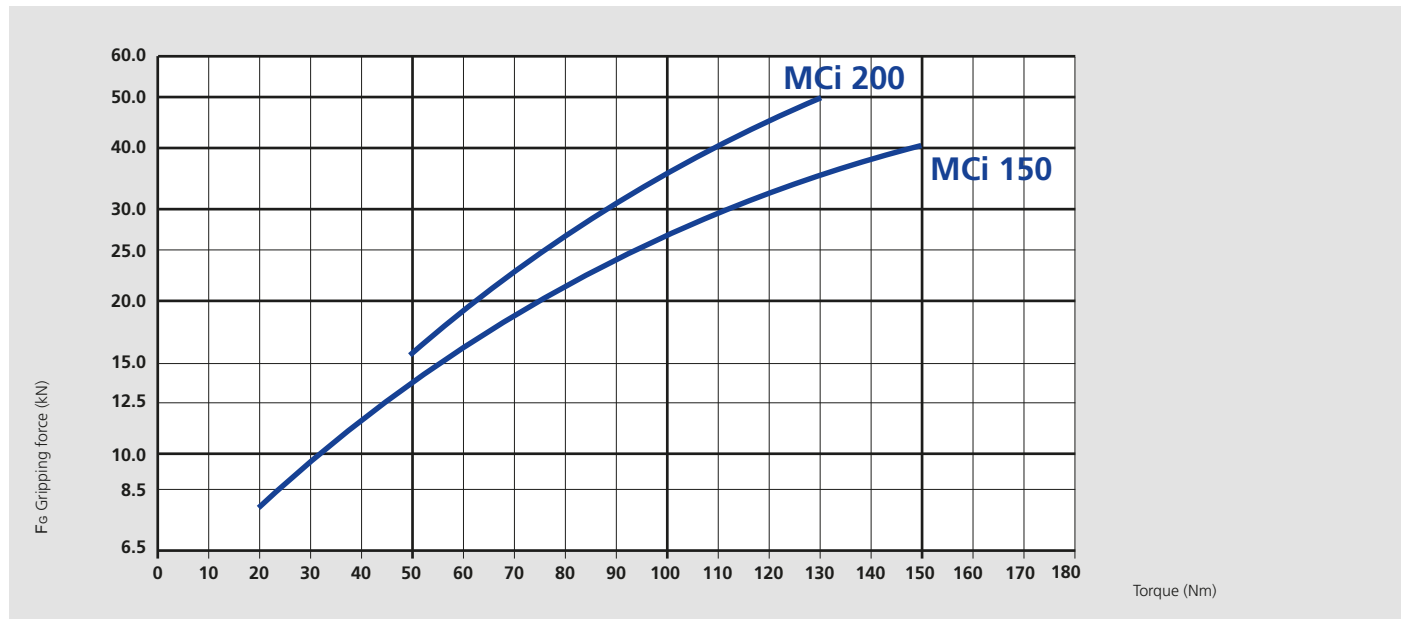


Order review

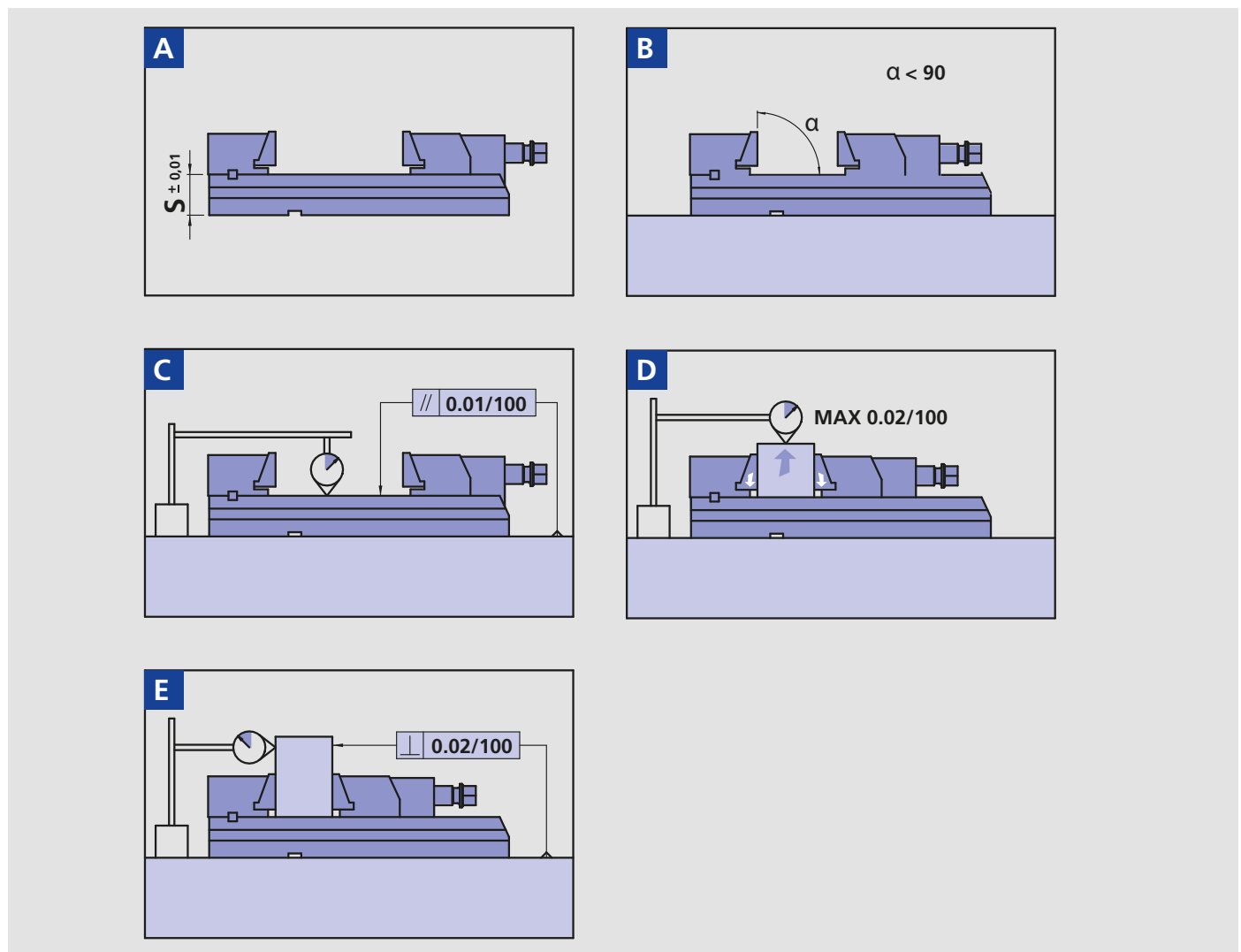
Type	Id. No.	A [mm]	B [mm]	C [mm]	D [mm]	E [mm]	F [mm]	G [mm]	H [mm]	I [mm]	J [mm]	L [mm]	M [mm]	S [mm]	T [mm]	Weight [kg]
MCI-DC 150x200	77581601	200	50	102	379	100	150	18	12.5	897	150	758	128	52	103	44
MCI-DC 150x250	77581602	250	50	102	439	100	200	18	12.5	997	150	878	128	52	103	48

- Clamping force diagram
- Tolerances

Clamping force diagram

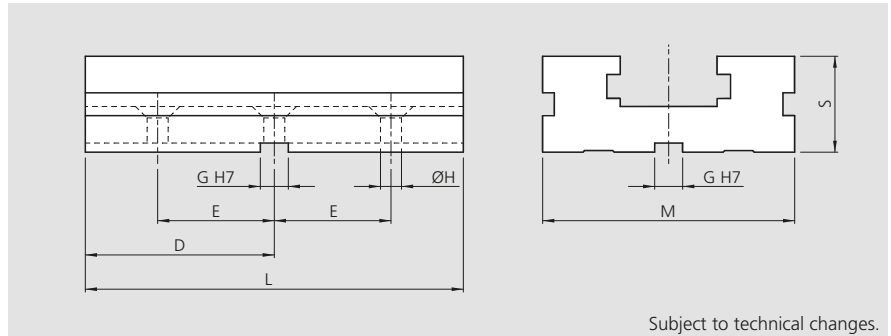


Form, position and dimensional tolerances for all clamping vises MCI



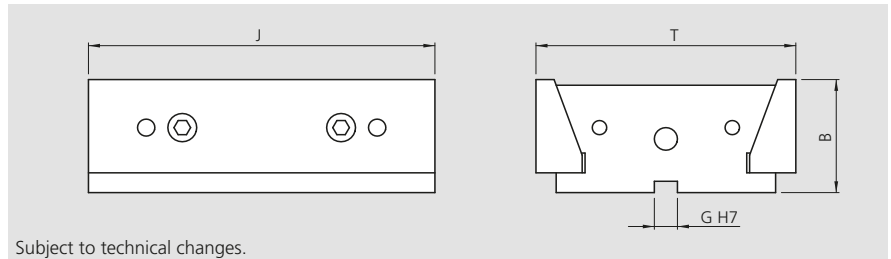
- Accessories
- Extension elements

MCI extension element with pair of positioning keys



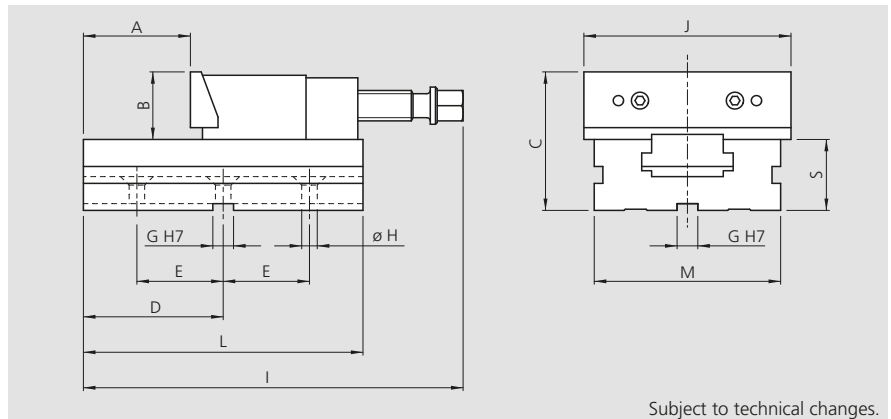
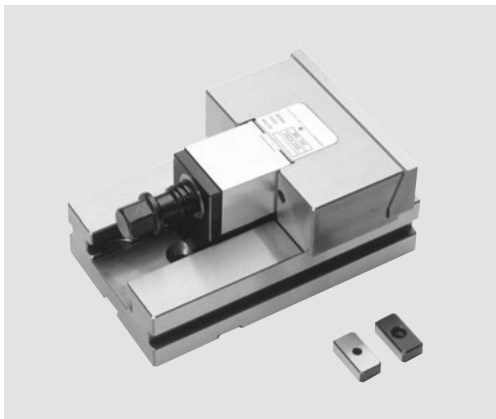
Type	Id. No.	D [mm]	E [mm]	G [mm]	H [mm]	L [mm]	M [mm]	S [mm]	Weight [kg]
MCI 150	58061700	114	75	18	12.5	228	128	52	8
MCI 200	58071700	140	100	18	12.5	280	168	66	18

MCI double fixed support with jaw



Type	Id. No.	B [mm]	G [mm]	J [mm]	T [mm]	Weight [kg]
MCI 150	58167210	50	12	150	103	5
MCI 200	58177210	70	18	200	140	15

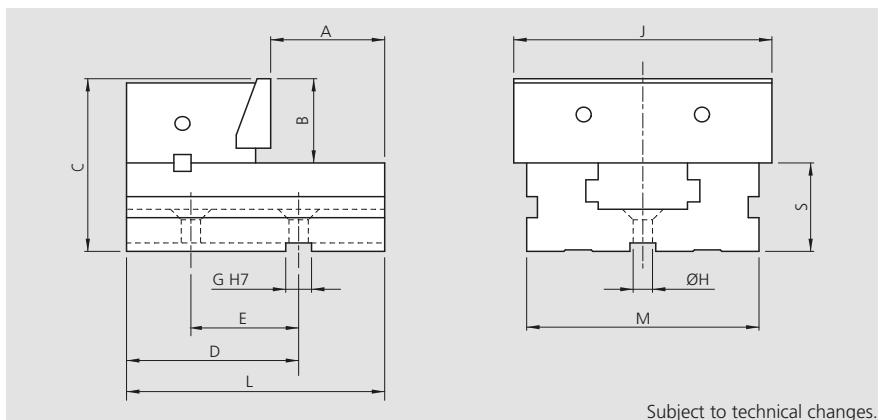
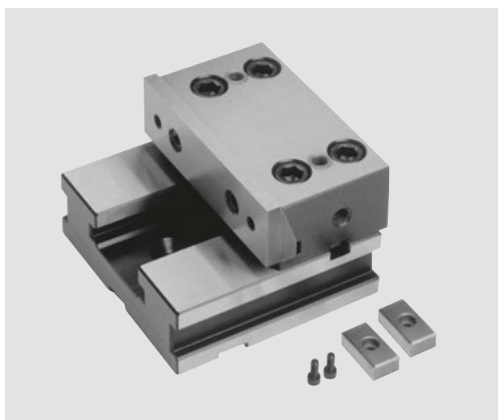
MCI complete extension element with pair of positioning keys



Type	Id. No.	A [mm]	B [mm]	C [mm]	D [mm]	E [mm]	G [mm]	H [mm]	I [mm]	J [mm]	L [mm]	M [mm]	S [mm]	Weight [kg]
MCI 150	58067110	100	50	102	114	75	18	12.5	295	150	228	128	52	14.5
MCI 200	58077110	120	70	136	140	100	18	12.5	370	200	280	168	66	34.5

- Accessories
- Base

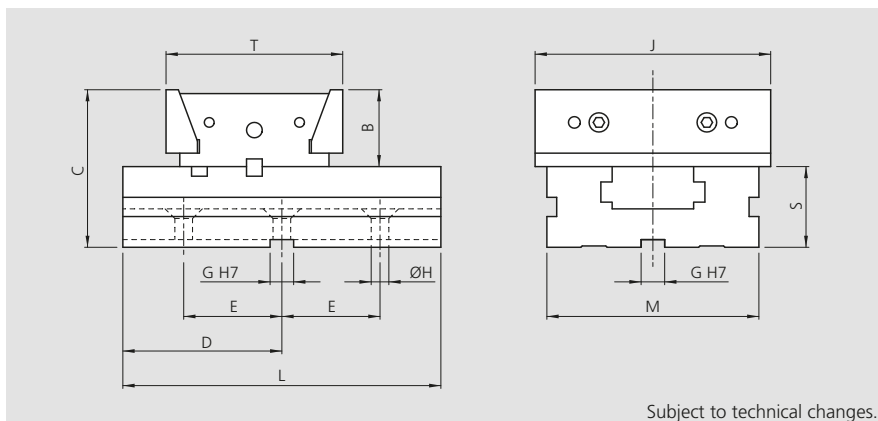
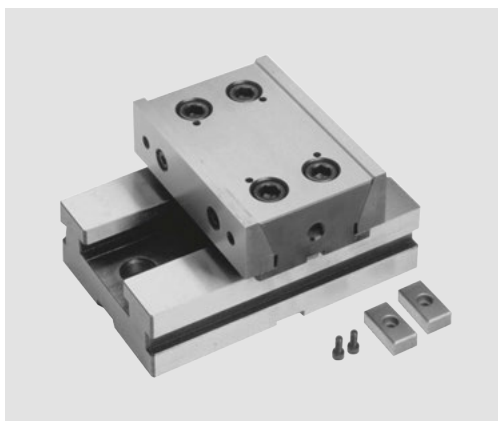
MCI base with fixed support with jaw complete with pair of positioning keys



Subject to technical changes.

Type	Id. No.	A [mm]	B [mm]	C [mm]	D [mm]	E [mm]	G [mm]	H [mm]	J [mm]	L [mm]	M [mm]	S [mm]	Weight [kg]
MCI 150	58067010	85	50	102	120	75	18	12.5	150	170	128	52	9.5
MCI 200	58077010	96	70	136	150	100	18	12.5	200	205	168	66	22

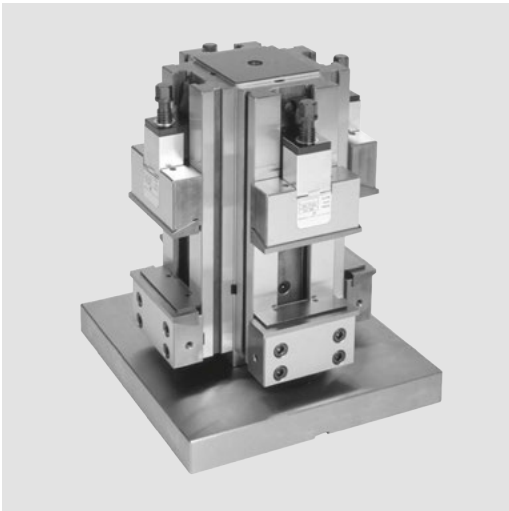
MCI base with double fixed support with jaw complete with pair of positioning keys



Subject to technical changes.

Type	Id. No.	B [mm]	C [mm]	D [mm]	E [mm]	G [mm]	H [mm]	J [mm]	L [mm]	M [mm]	S [mm]	T [mm]	Weight [kg]
MCI 150	58167010	50	102	100	75	18	12.5	150	200	128	52	103	13
MCI 200	58177010	70	136	125	100	18	12.5	200	250	168	66	140	40

- Quick positioning for the jaw
- Maximum flexibility



Application/customer benefits

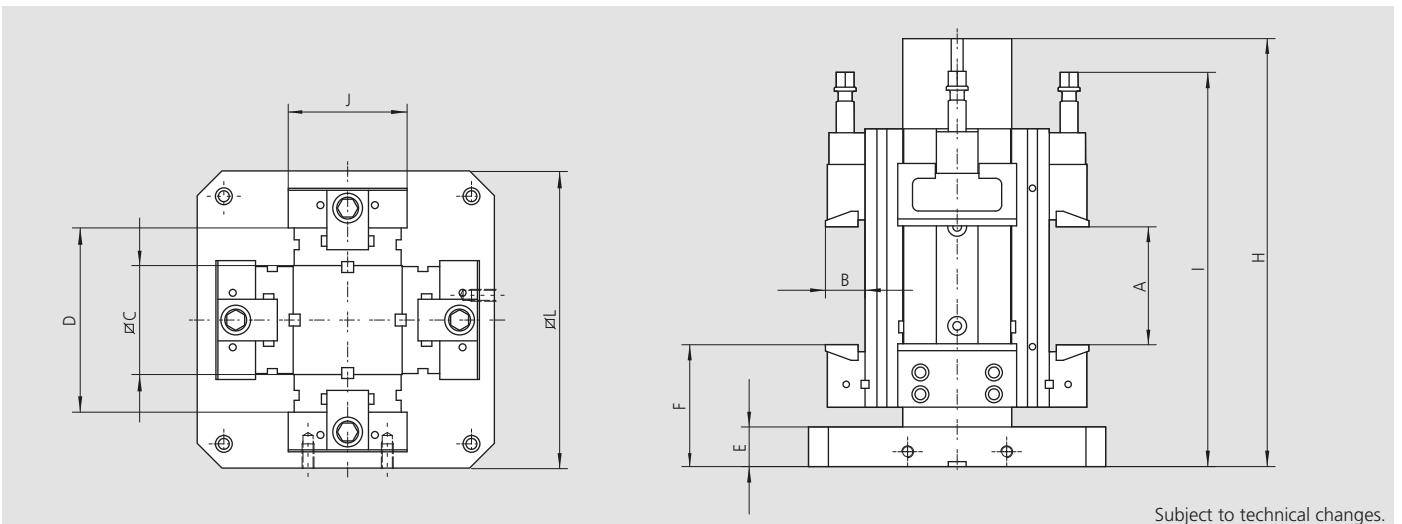
- Steel tombstone ready to use on horizontal machining centres, including 4 MCI vises
- Quick positioning for the movable jaw
- Maximum flexibility due to the wide range of accessories

Technical features

- 2 different jaw sizes
- Pull-down jaws (0.2 mm)
- Parallel stripes with quick change „CLAK-System“ see page 295
- Interface for JIS pallets and for zero point clamping systems APS / WPS / ZeroAct (on request)

Standard equipment

Vertical clamping system complete with: 4 clamping equipment MCI, 1 column, 1 base for vertical system MCI, 4 pairs of SinterGrip jaws, 4 pairs of CLAK parallels, 4 covers for protection of the screws 4 rigid slide-ways, 4 workstops, 4 wrenches, eye bolt for lifting, transport box



Subject to technical changes.

Order review

Type	Id. No.	A [mm]	B [mm]	C [mm]	D [mm]	E [mm]	F [mm]	H [mm]	I [mm]	J [mm]	L [mm]	Weight [kg]
MVS-MCi 150 x 200	77582621	200	50	150	254	40	146	580	545	150	400	249
MVS-MCi 150 x 250	77582622	250	50	150	254	40	146	580	595	150	400	257
MVS-MCi 150 x 300	77582623	300	50	150	254	40	146	580	650	150	400	267
MVS-MCi 150 x 200	77582631	200	50	150	254	40	146	580	545	150	500	276
MVS-MCi 150 x 250	77582632	250	50	150	254	40	146	580	595	150	500	284
MVS-MCi 150 x 300	77582633	300	50	150	254	40	146	580	650	150	500	294
MVS-MCi 200 x 300	77582731	300	70	200	332	40	159	661	711	200	500	535

■ Steel tombstone



Application/customer benefits

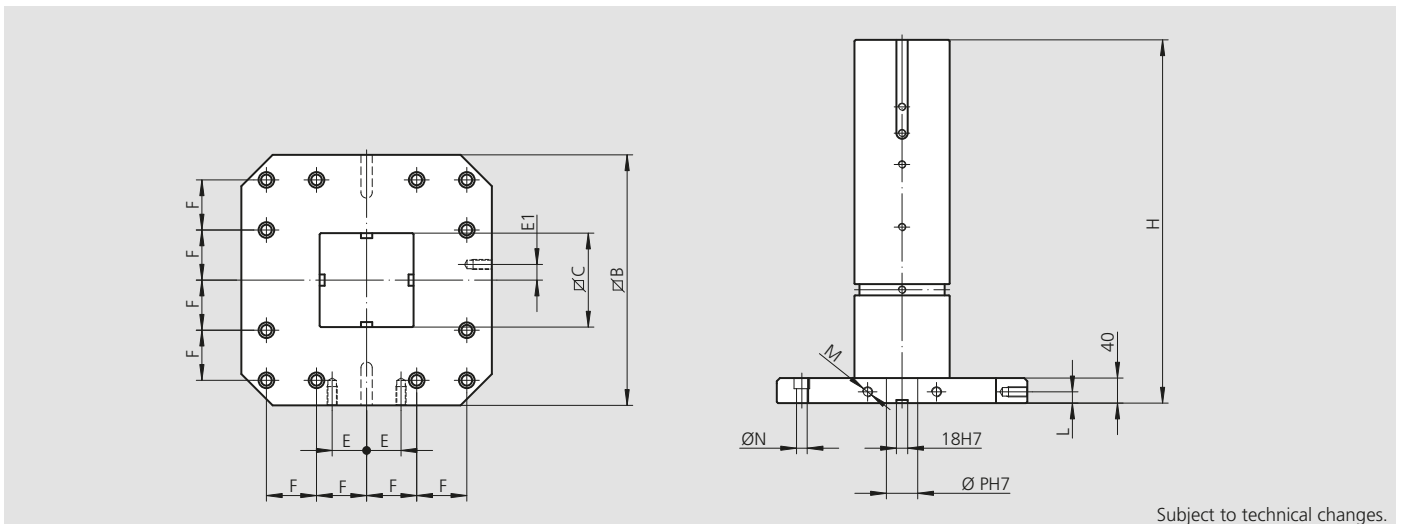
- Steel tombstone ready to use on horizontal machining centres

Technical features

- Interface for JIS pallets and for zero point clamping systems APS / WPS / ZeroAct

Standard equipment

Tombstone



Subject to technical changes.

Order review

Type	Id. No.	B [mm]	C [mm]	E [mm]	E1 [mm]	F [mm]	H [mm]	L [mm]	M [mm]	N [mm]	P [mm]	Weight [kg]
MVS-MCi 150	58228020	400	150	55	25	80	580	18	16	17	50	142
MVS-MCi 150	58228030	500	150	75	25	100	580	18	16	17	50	169
MVS-MCi 200	58238030	500	200	75	25	100	661	18	16	17	50	266

Insert for vertical use



Type	Id. No.
MVS-MCi 150	58223300
MVS-MCi 200	58233300

- Quick positioning for the jaw
- Maximum flexibility



Application/customer benefits

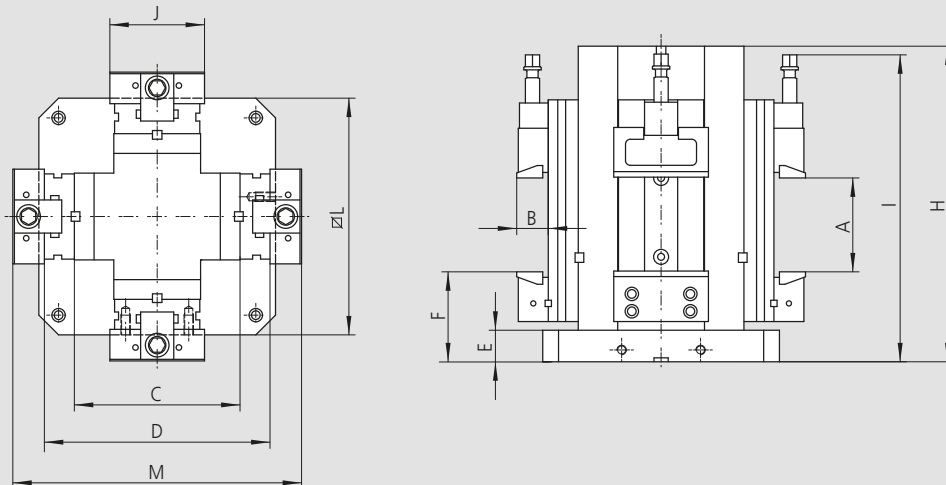
- Steel tombstone ready to use on horizontal machining centres, including 4 MCI vises
- Quick positioning for the movable jaw
- Maximum flexibility due to the wide range of accessories

Technical features

- 2 different jaw sizes
- Pull-down jaws (0.2 mm)
- Parallel stripes with quick change „CLAK-System“ see page 295
- Interface for JIS pallets and for zero point clamping systems APS / WPS / ZeroAct (on request)

Standard equipment

Vertical clamping system complete with: 4 clamping equipment MCI, 1 cross tombstone for vertical system MCI, 4 pairs of SinterGrip jaws, 4 pairs of CLAK parallels, 4 covers for protection of the screws 4 rigid slide-ways, 4 work stops, 4 wrenches, eye bolt for lifting, transport box

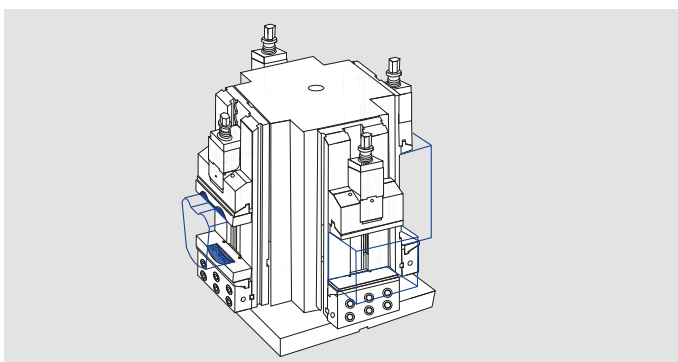


Subject to technical changes.

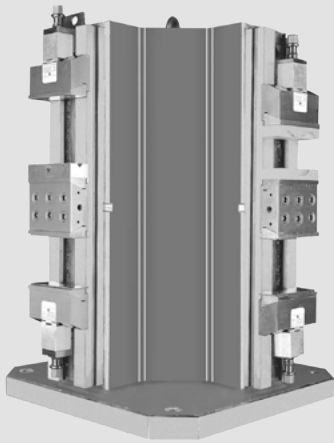
Order review

Type	Id. No.	A [mm]	B [mm]	C [mm]	D [mm]	E [mm]	F [mm]	H [mm]	I [mm]	J [mm]	L [mm]	M [mm]	Weight [kg]
VCS-MCi 150 x 200	77585621	200	50	300	404	40	140	580	540	150	400	504	314
VCS-MCi 150 x 250	77585622	250	50	300	404	40	140	580	590	150	400	504	322
VCS-MCi 150 x 300	77585623	300	50	300	404	40	140	580	647	150	400	504	332
VCS-MCi 150 x 200	77585631	200	50	300	404	40	140	580	540	150	500	504	342
VCS-MCi 150 x 250	77585632	250	50	300	404	40	140	580	590	150	500	504	350
VCS-MCi 150 x 300	77585633	300	50	300	404	40	140	580	547	150	500	504	360
VCS-MCi 200 x 300	77585741	300	70	350	482	45	168	670	720	200	630	622	627

Working examples



- Quick positioning for the jaw
- Maximum flexibility



Application/customer benefits

- Ready to use vertical clamping system including 4 MCi vises
- Quick positioning for the movable jaw
- Extra long clamping range
- Maximum flexibility due to the wide range of accessories

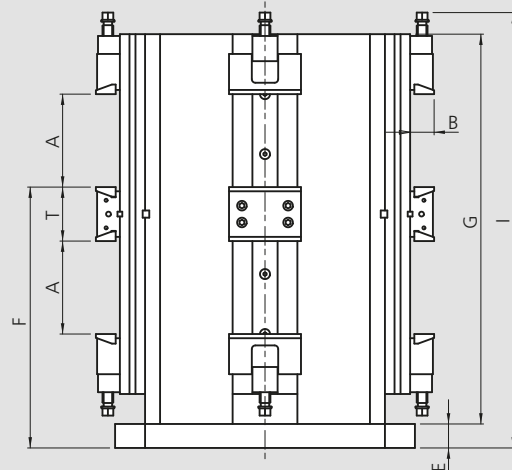
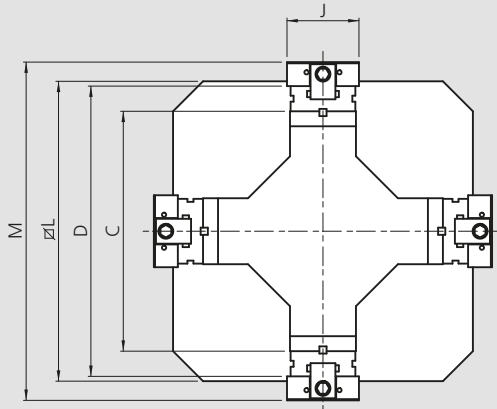
Technical features

- Pull-down jaws (0.2 mm)
- Parallel stripes with quick change „CLAK-System“ see page 295
- Optional: Interface for zero point clamping systems APS / WPS / ZeroAct (on request)

Standard equipment

Vertical clamping system complete with: 4 double clamping equipment MCi-DC, 1 cross tombstone XL, 8 pairs parallels with quick change „CLAK-System, 8 covers for protection of the screws, 8 rigid slide-ways, 8 workstops, eye bolt for lifting, 8 wrenches, transport box

Subject to technical changes.

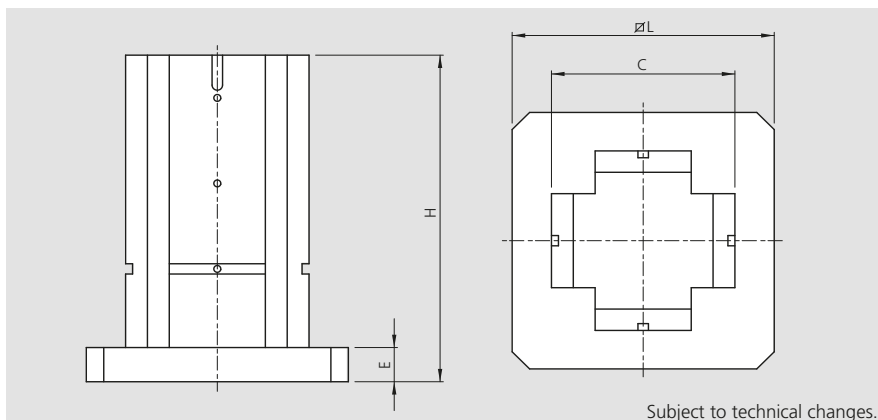


Order review

Type	Id. No.	A [mm]	B [mm]	C [mm]	D [mm]	E [mm]	F [mm]	G [mm]	I [mm]	J [mm]	L [mm]	M [mm]	T [mm]	Weight [kg]
DVCS-MCi 150x200	77586601	200	50	550	654	45	515	795	890	150	630	754	103	680

- Accessories
- Cross cube

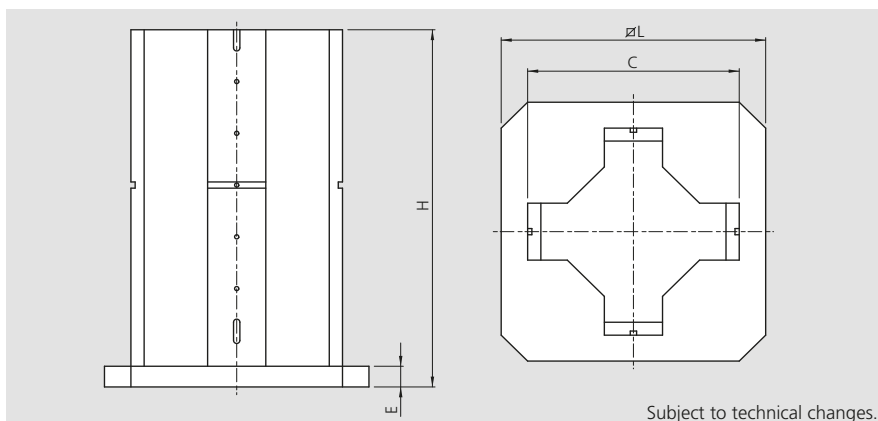
Cross cube for VCS-TCi; -MCI



Subject to technical changes.

Type	Id. No.	C [mm]	E [mm]	H [mm]	L [mm]	Weight [kg]
VCS 150	58528020	300	40	580	400	212
VCS 150	58528030	300	40	580	500	240
VCS 200	58538040	350	45	670	630	363

Cross cube for DVCS-TCi; -MCI



Subject to technical changes.

Type	Id. No.	C [mm]	E [mm]	H [mm]	L [mm]	Weight [kg]
DVCS 150	58628000	550	45	840	630	475

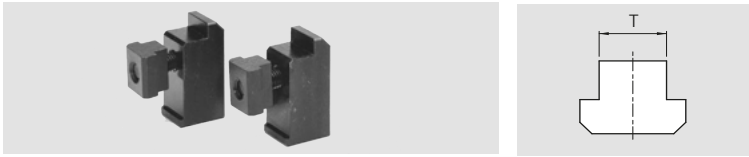
Insert for vertical use



Type	Id. No.
MCI 150	58223300
MCI 200	58233300

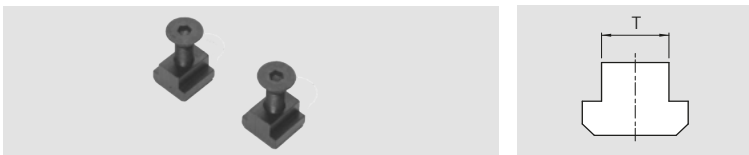
- Accessories
- Mounting

Clamps (1 pair) incl. screw and T-nut



Type	Id. No. / Groove width					
	12 mm	14 mm	16 mm	18 mm	20 mm	22 mm
MCi 150	58022792	58022793	58022794	58022795	58022796	58022797
MCi 200	58032792	58032793	58032794	58032795	58032796	58032797

T-nuts (1 pair) incl. screw



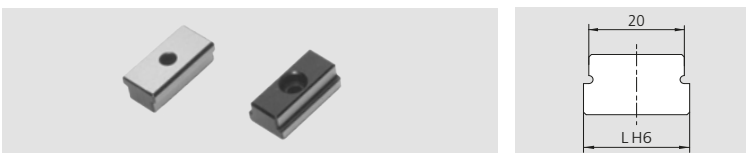
Type	Id. No. / Groove width					
	12 mm	14 mm	16 mm	18 mm	20 mm	22 mm
MCi 150	58022592	58022593	58022594	58022595	58022596	58022597
MCi 200	58032592	58032593	58032594	58032595	58032596	58032597

Key way with standard dimensions (1 pair)



Type	Id. No. / Groove width 12h6 mm
MCi 200	58021395

Key way with special dimensions (1 pair)



Type	Id. No. / Groove width					
	12h6 mm	14h6 mm	16h6 mm	18h6 mm	20h6 mm	22h6 mm
MCi 150	58021392	58021393	58021394	-	58021396	58021397
MCi 200	58021392	58021393	58021394	-	58021396	58021397

Precision bench vise

CLAK-System

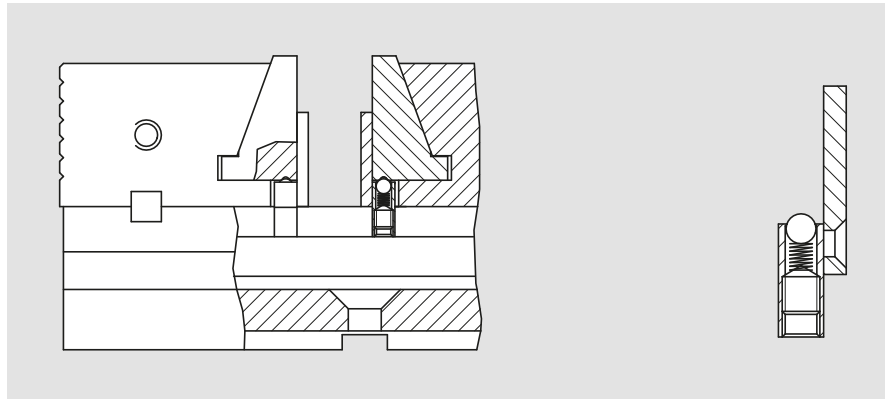
- Parallels for quick change CLAK-System
- Suitable for TCi and MCi vices

This new patented system allows the quick change of parallels, angular parallels, V-jaws, soft jaws for any type of workpieces.

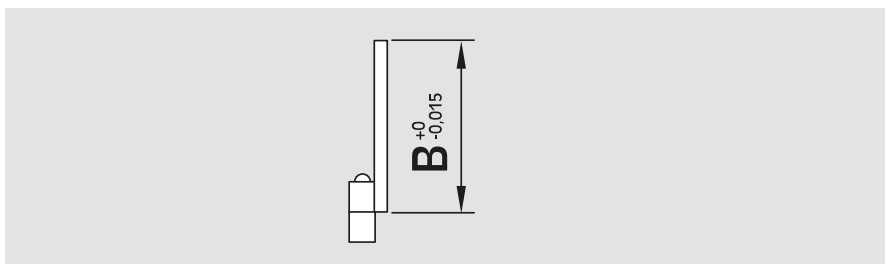
Benefits:

- Reduce downtime and set-up time
- Elimination of clamps and locks thanks to the patented self locking system
- Increase the accuracy of finished parts and reduce scrap

All components are case hardened and precision ground.

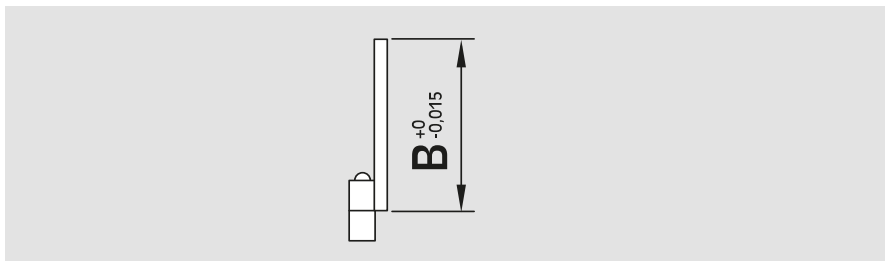


Set 6 pairs of parallels for quick change CLAK-System



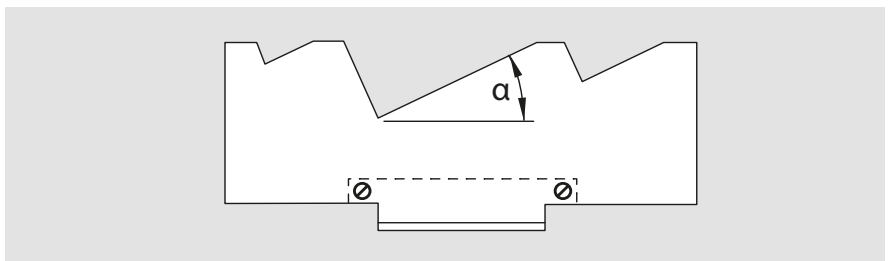
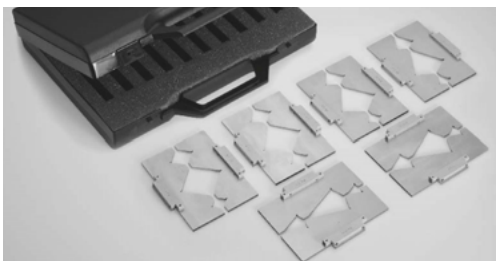
Type	Id. No.	B					
		[mm]	[mm]	[mm]	[mm]	[mm]	[mm]
TCi 110	58019206	10	15	20	25	30	35
TCi / MCi 150	58029206	20	25	30	35	40	45
TCi / MCi 200	58039206	20	30	40	50	60	65

Set 10 pairs of parallels for quick change CLAK-System



Type	Id. No.	B									
		[mm]	[mm]	[mm]	[mm]	[mm]	[mm]	[mm]	[mm]	[mm]	[mm]
TCi 110	58019210	10	12	15	20	25	28	30	33	35	37
TCi / MCi 150	58029210	12	15	20	25	30	35	40	43	45	47
TCi / MCi 200	58039210	20	25	30	35	40	45	50	55	60	65

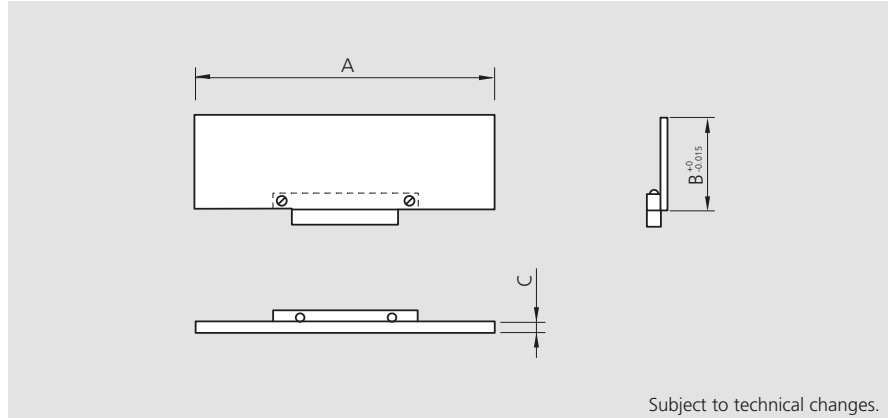
Set 6 pairs of prism parallels for quick change CLAK-System



Type	Id. No.	α					
		[mm]	[mm]	[mm]	[mm]	[mm]	[mm]
TCi 110	58019306	20°	25°	30°	35°	40°	45°
TCi / MCi 150	58029306	20°	25°	30°	35°	40°	45°
TCi / MCi 200	58039306	20°	25°	30°	35°	40°	45°

- Parallels for quick change CLAK-System
- Suitable for TCi and MCI vices

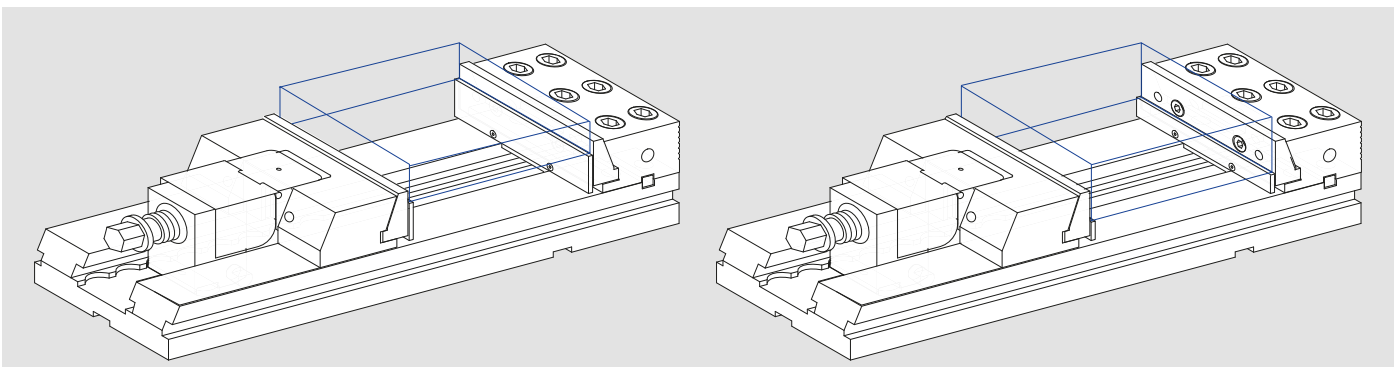
Parallels (1 pair)



Subject to technical changes.

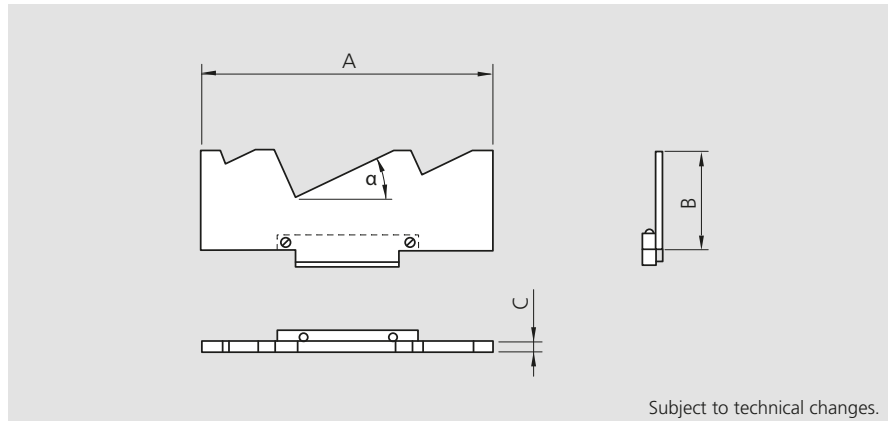
Type	Id. No.	B [mm]	A [mm]	C [mm]
TCi 110	58013510	10	106	3
TCi 110	58013512	12	106	3
TCi 110	58013515	15	106	3
TCi 110	58013520	20	106	3
TCi 110	58013525	25	106	3
TCi 110	58013528	28	106	3
TCi 110	58013530	30	106	3
TCi 110	58013533	33	106	3
TCi 110	58013535	35	106	3
TCi 110	58013537	37	106	3
TCi 150 / MCI 150	58023512	12	146	3
TCi 150 / MCI 150	58023515	15	146	3
TCi 150 / MCI 150	58023520	20	146	3
TCi 150 / MCI 150	58023525	25	146	3
TCi 150 / MCI 150	58023530	30	146	3
TCi 150 / MCI 150	58023535	35	146	3
TCi 150 / MCI 150	58023540	40	146	3
TCi 150 / MCI 150	58023543	43	146	3
TCi 150 / MCI 150	58023545	45	146	3
TCi 150 / MCI 150	58023547	47	146	3
TCi 200 / MCI 200	58033520	20	196	4
TCi 200 / MCI 200	58033525	25	196	4
TCi 200 / MCI 200	58033530	30	196	4
TCi 200 / MCI 200	58033535	35	196	4
TCi 200 / MCI 200	58033540	40	196	4
TCi 200 / MCI 200	58033545	45	196	4
TCi 200 / MCI 200	58033550	50	196	4
TCi 200 / MCI 200	58033555	55	196	4
TCi 200 / MCI 200	58033560	60	196	4
TCi 200 / MCI 200	58033565	65	196	4

Application examples



- Parallels for quick change CLAK-System
- Suitable for TCi and MCi vices

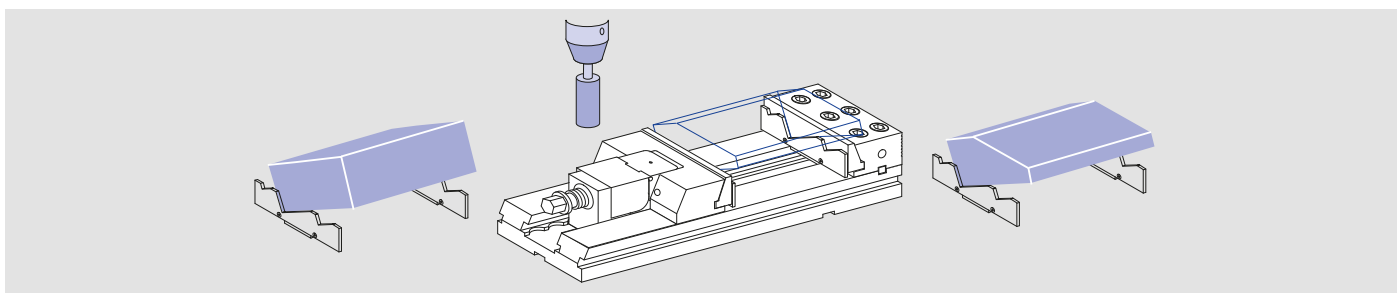
Angular parallels (1 pair)



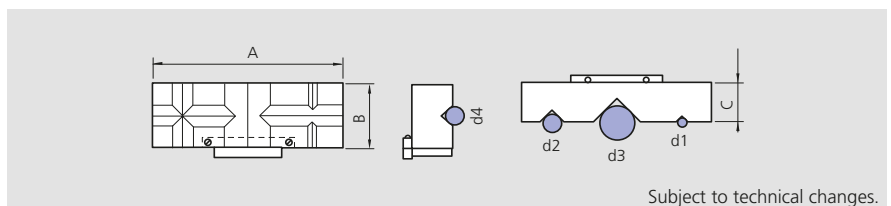
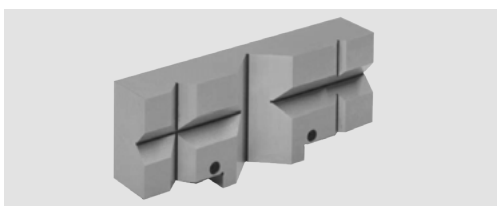
Subject to technical changes.

Type	Id. No.	α [mm]	A [mm]	B [mm]	C [mm]
TCi 110	58013620	20	106	40	4
TCi 110	58013625	25	106	40	4
TCi 110	58013630	30	106	40	4
TCi 110	58013635	35	106	40	4
TCi 110	58013640	40	106	40	4
TCi 110	58013645	45	106	40	4
TCi 150 / MCi 150	58023620	20	146	50	4
TCi 150 / MCi 150	58023625	25	146	50	4
TCi 150 / MCi 150	58023630	30	146	50	4
TCi 150 / MCi 150	58023635	35	146	50	4
TCi 150 / MCi 150	58023640	40	146	50	4
TCi 150 / MCi 150	58023645	45	146	50	4
TCi 200 / MCi 200	58033620	20	196	70	4
TCi 200 / MCi 200	58033625	25	196	70	4
TCi 200 / MCi 200	58033630	30	196	70	4
TCi 200 / MCi 200	58033635	35	196	70	4
TCi 200 / MCi 200	58033640	40	196	70	4
TCi 200 / MCi 200	58033645	45	196	70	4

Application examples



V-jaw

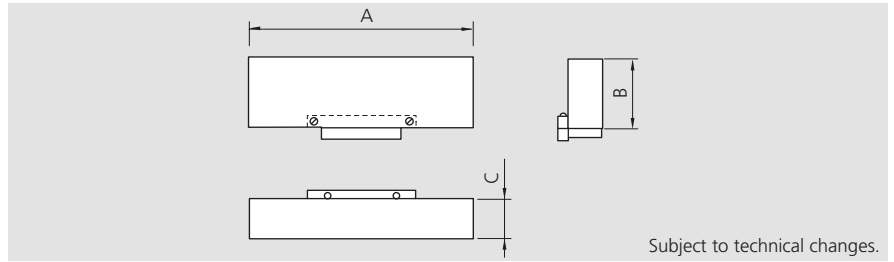
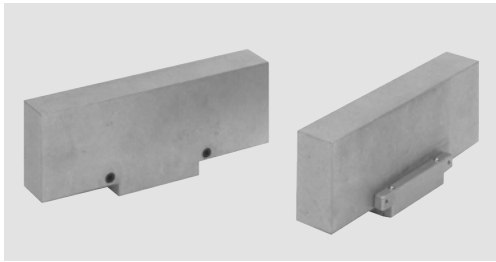


Subject to technical changes.

Type	Id. No.	A [mm]	B [mm]	C [mm]	D1		D2		D3		D4	
					min.-mm	max.-mm	min.-mm	max.-mm	min.-mm	max.-mm	min.-mm	max.-mm
TCi 110	58019409	106	40	30	3	6.5	6.5	15	15	35	7	16
TCi 150 / MCi 150	58029409	146	50	30	3	6.5	6.5	15	15	35	7	16
TCi 200 / MCi 200	58039409	196	70	50	6	13	13	30	30	70	15	35

- Aluminium and steel soft jaws
- Suitable for TCI and MCI vices

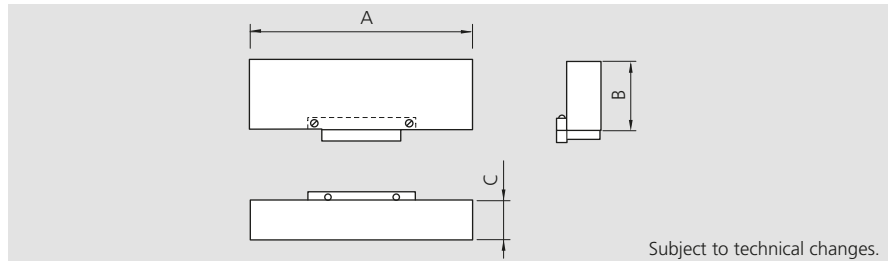
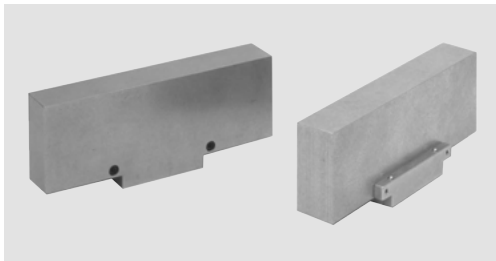
Aluminium jaws (1 pair)



Subject to technical changes.

Type	Id. No.	A [mm]	B [mm]	C [mm]
TCi 110	58019509	106	40	19
TCi 150 / MCI 150	58029509	146	50	24
TCi 200 / MCI 200	58039509	196	70	34

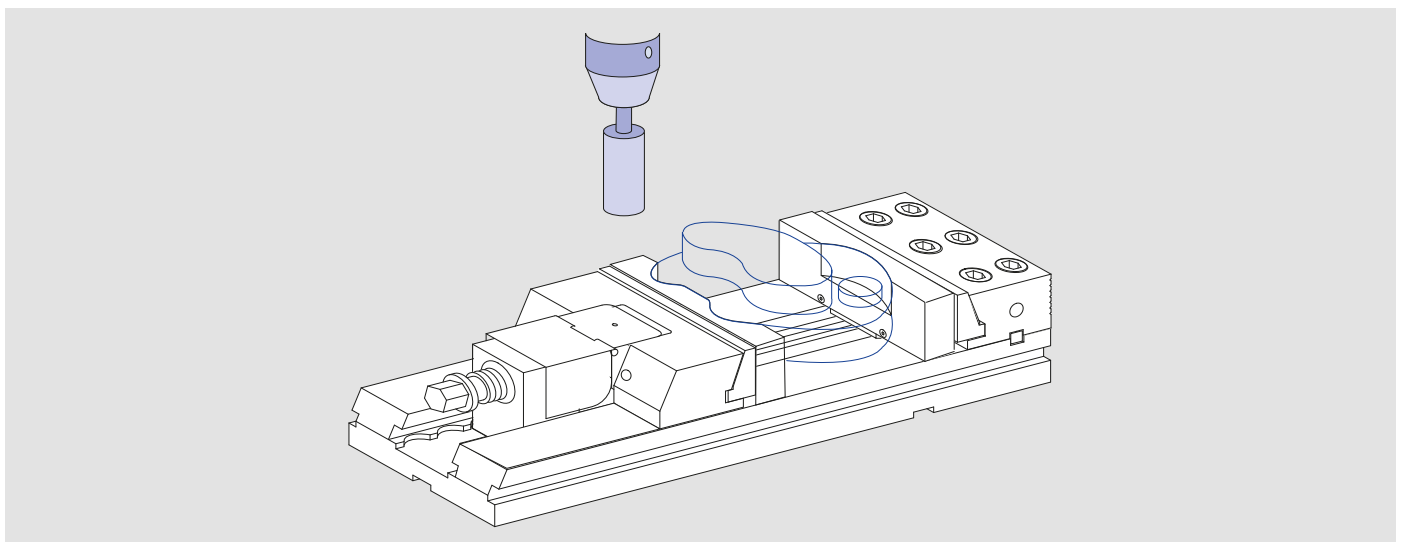
Steel soft jaws (1 pair)



Subject to technical changes.

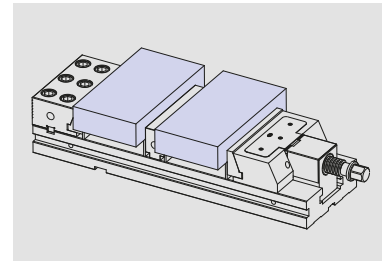
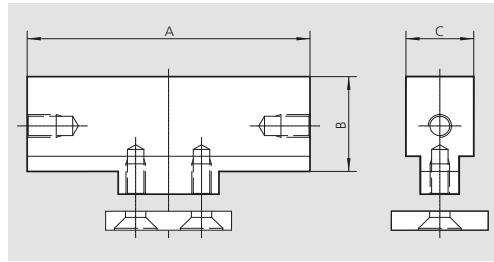
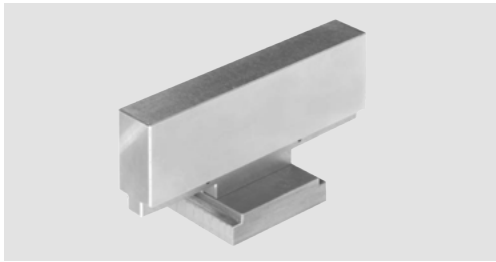
Type	Id. No.	A [mm]	B [mm]	C [mm]
TCi 110	58019609	106	40	19
TCi 150 / MCI 150	58029609	146	50	24
TCi 200 / MCI 200	58039609	196	70	34

Application examples



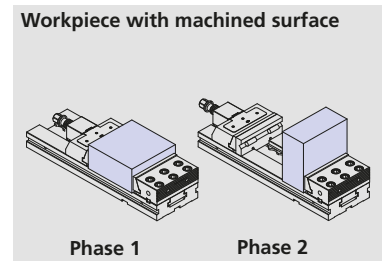
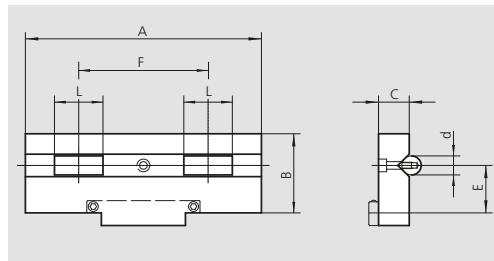
- Jaws CLAK-System
- Suitable for TCi and MCi vices

Middle jaw CLAK-System



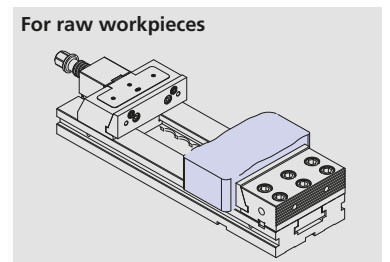
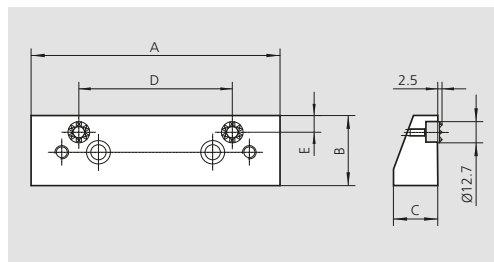
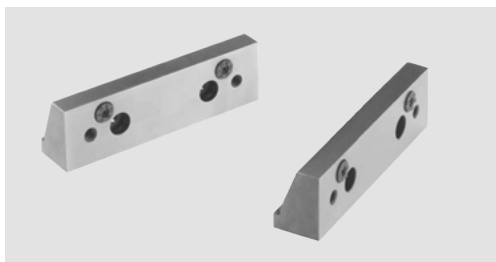
Type	Id. No.	A [mm]	B [mm]	C [mm]
TCi 110	58014109	106	40	32
TCi 150 / MCi 150	58024109	146	50	32
TCi 200 / MCi 200	58034109	196	70	48

Jaw with rolls



Type	Id. No.	A [mm]	B [mm]	C [mm]	d [mm]	E [mm]	F [mm]	L [mm]
TCi 110	58019709	106	40	19	12	25	60	30
TCi 150 / MCi 150	58029709	146	50	19	12	30	80	30
TCi 200 / MCi 200	58039709	196	70	28	16	40	110	40

Jaws (1 pair) with grippers UGE



Type	Id. No.	A [mm]	B [mm]	C [mm]	D [mm]	E [mm]
TCi 150 / MCi 150	58024509	146	42	26	90	10
TCi 200 / MCi 200	58034509	196	60	31	160	12

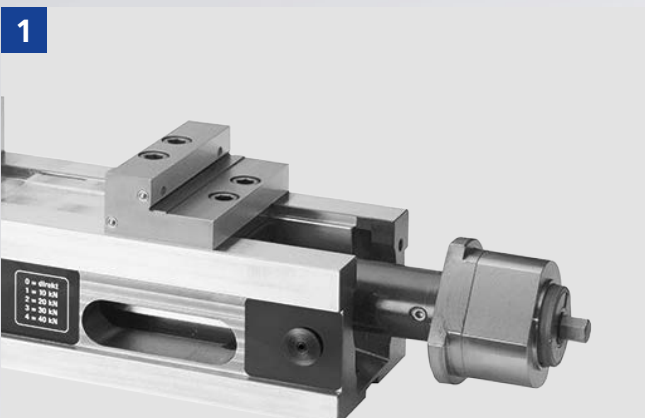
TTi-2G

NC clamping vise



Quick change system of the spindle unit

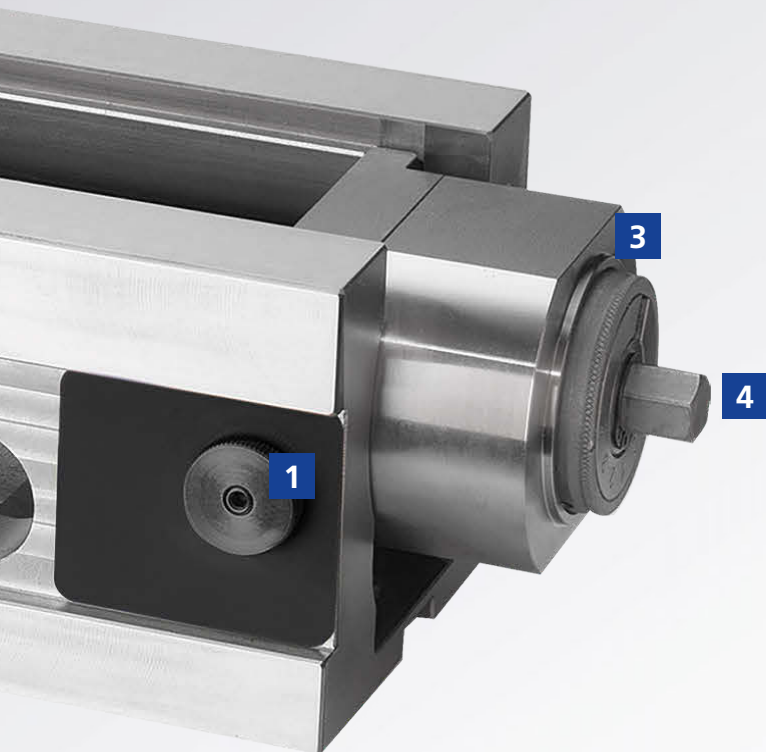
- Disassembling of the spindle unit without tools
- Easy and quick cleaning of the vise



Parallels with quick change system

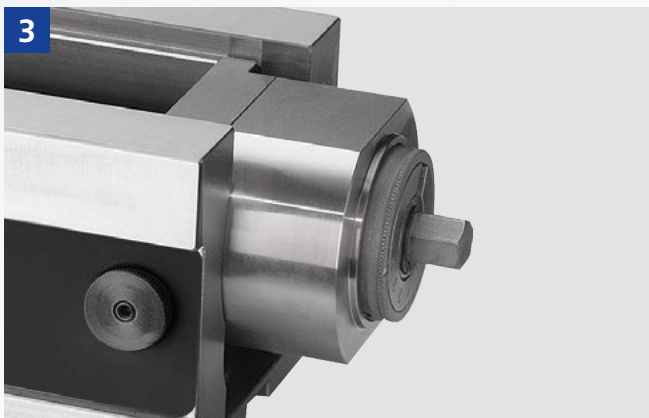
- Mounting of parallels without tools
- No penetration of chips below parallels





Protected spindle with mechanical power intensifier

- Exact pre-select of the clamping force (up to 11 steps)
- Constant clamping force for maximum process reliability



Interface for zero point clamping systems

APS | WPS | ZeroAct

As a standard for highest efficiency while set-up

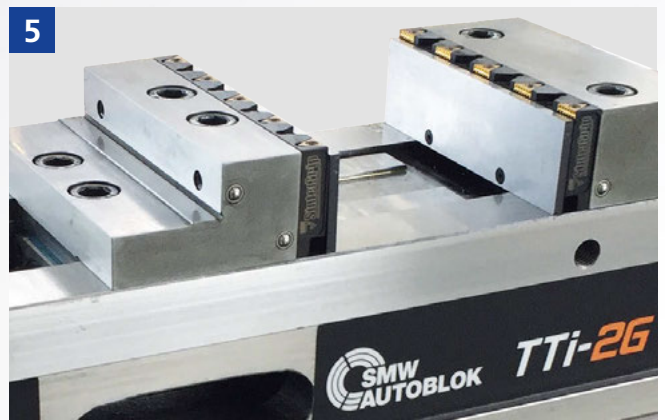
6



SinterGrip

Jaws for SinterGrip clamping inserts as an accessory for OP 10 operations available

5



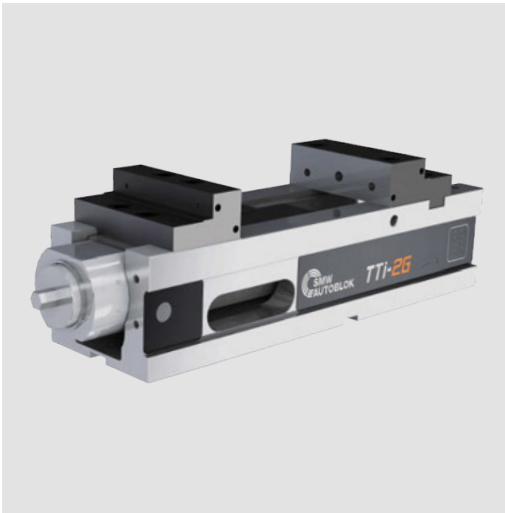
Angle drive (accessory)

- Easy use on the machine table
- Best accessibility for the setting of the clamping force

4



- With precision power transmitter
- Clamping against fixed jaw



Application/customer benefits

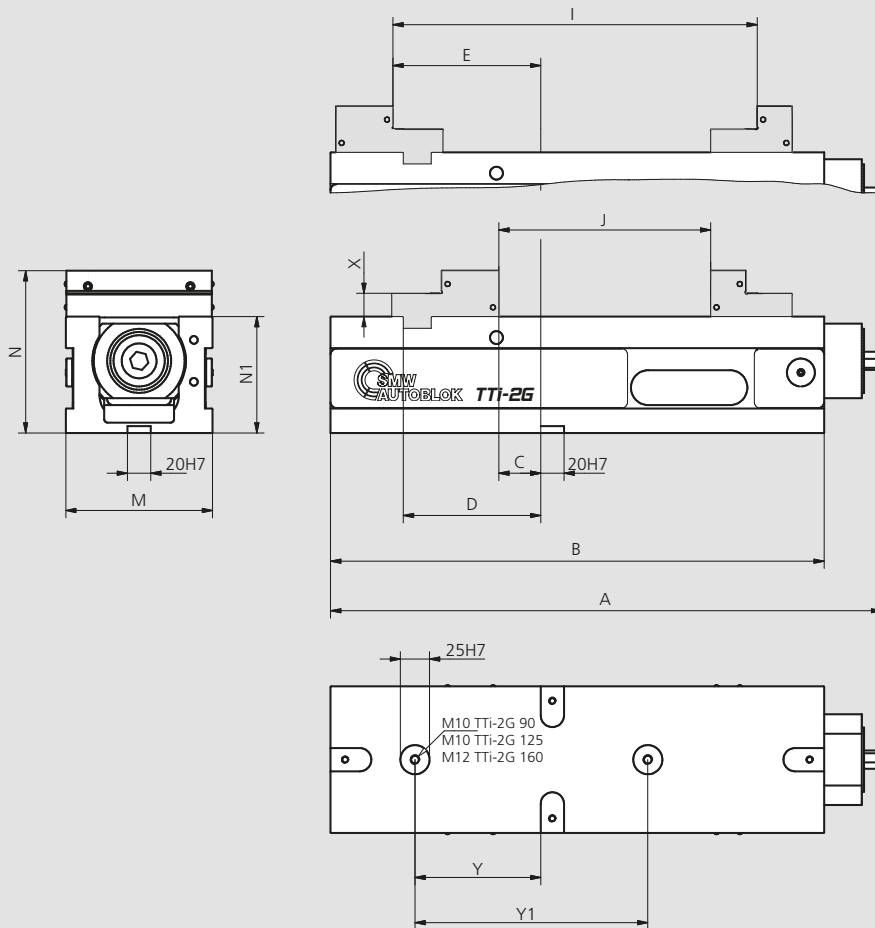
- NC clamping vise with precision power transmitter for high clamping forces
- Maintenance-free encapsulated spindle
- Accurate and highest repeatability of the clamping process
- Easy and quick cleaning possibility
- Maximum flexibility due to the huge range of accessories
- Clamping force pre-adjustment (up to 11 clamping steps)
- Standardized jaw interface (Allmatic compatible)
- Parallels with quick change

Technical features

- High clamping forces (up to 60 kN)
- 3 different sizes
- Precision guideway hardened and ground
- Interface for zero point clamping systems APS / WPS / ZeroAct as a standard

Standard equipment

TTi-2G clamping vise together with hand crank and stepped top jaws, 4 pieces of clamps for fixing



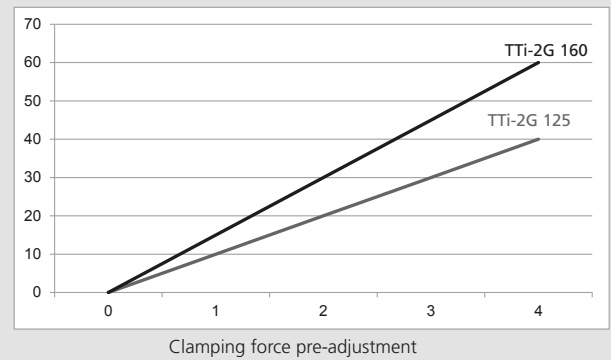
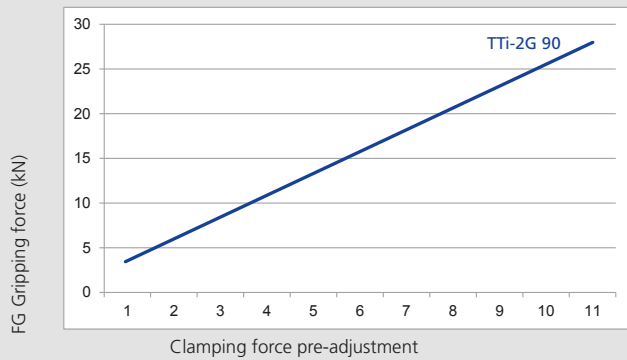
Subject to technical changes.

Order review

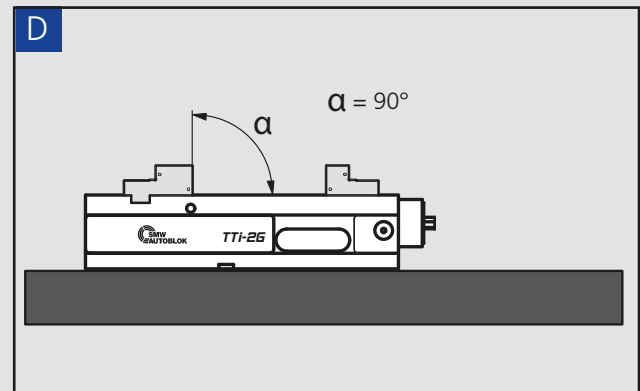
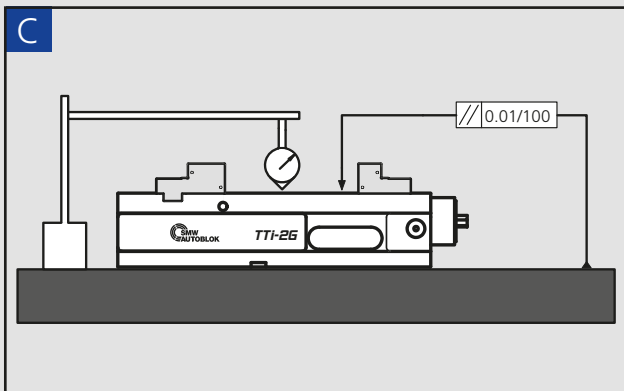
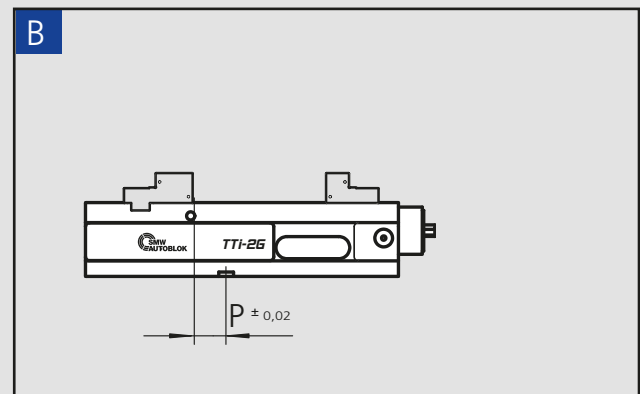
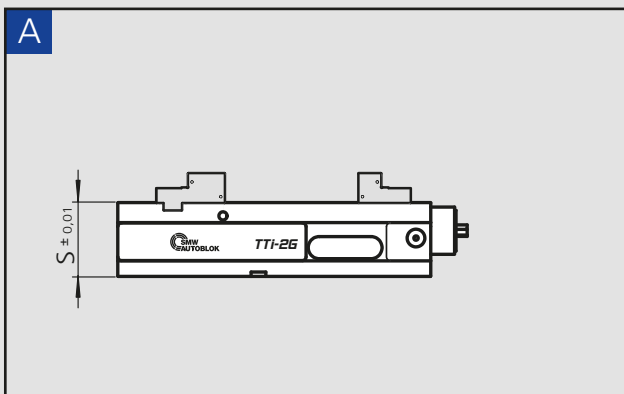
Type	Id. No.	A [mm]	B [mm]	C [mm]	D [mm]	E [mm]	J [mm]	I [mm]	M [mm]	N [mm]	N1 [mm]	X [mm]	Y [mm]	Y1 [mm]	Clamping force [kN]	Weight [kg]
TTi-2G 90	462734	340	305	15	73	75	0-126	91-217	90	114	80	16	58	200	28	15
TTi-2G 125	462735	483	424	36	118	127	0-185	131-313	126	139.5	100	20	108	200	40	35
TTi-2G 160	462736	616	560	70	164	178	17-263	187-433	164	164.8	115	25	114	300	60	60

- With precision power transmitter
- Clamping against fixed jaw

Clamping force diagram

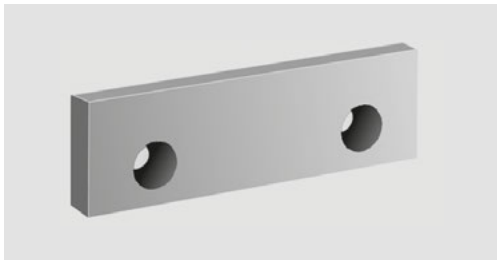


Form, position and dimensional tolerances for all NC clamping vises TTI-2G



- Accessories
- Jaw sets

Flat clamping jaw hardened and grinded



Type	Id. No.	Height [mm]	Depth [mm]
TTi-2G 90	462738	34	10
TTi-2G 125	462739	39.2	12
TTi-2G 160	462740	49.2	16

Consisting of:
1 piece clamping jaw

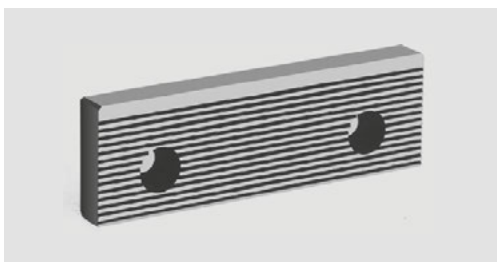
Flat clamping jaw soft (Material 1.2842)



Type	Id. No.	Height [mm]	Depth [mm]
TTi-2G 90	462741	34	12
TTi-2G 125	462742	39.2	12
TTi-2G 160	462743	49.2	16

Consisting of:
1 piece clamping jaw

Clamping jaw with transverse rib



Type	Id. No.	Height [mm]	Depth [mm]
TTi-2G 90	462744	34	10
TTi-2G 125	462745	39.2	12
TTi-2G 160	462746	49.2	16

Consisting of:
1 piece clamping jaw

Level bar with quick change fixing



Type	Id. No.	Height [mm]	Depth [mm]
TTi-2G 90	462747	13	3
TTi-2G 90	462748	22	3
TTi-2G 125	462749	39	3
TTi-2G 125	462750	35	3
TTi-2G 125	462751	15	3
TTi-2G 160	462752	14	3
TTi-2G 160	462753	30	3
TTi-2G 160	462754	44	3

Consisting of:
1 piece level bar

SinterGrip clamping jaw



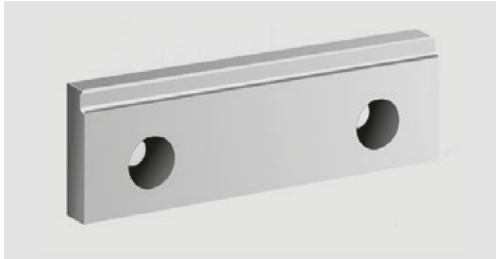
Type	Id. No.	Qty. SinterGrip per jaw	Height [mm]	Depth [mm]
TTi-2G 125	462755	9	39.5	12
TTi-2G 160	462756	11	49.8	12

Consisting of:
1 set = 2 pieces; SinterGrip clamping jaw (without clamping inserts)



- Accessories
- Jaws

Flat clamping jaw hardened and grinded



Type	Id. No.	Step [mm]	Height [mm]	Depth [mm]
TTi-2G 125	462757	3 x 6	39.2	12
TTi-2G 125	462758	5 x 10	39.2	12
TTi-2G 160	462759	5 x 8	49.2	16

Consisting of:
1 piece clamping jaw

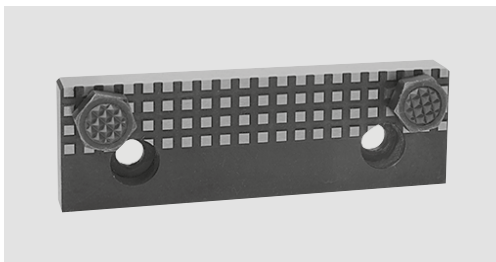
Grip bar suitable for flat clamping jaws TTi-2G 125



Type	Id. No.	Model	Height [mm]	Step [mm]
TTi-2G 125	462760	High	39.5	1.4 x 4.5
TTi-2G 125	462761	Step	19.5	2 x 4.5

Consisting of:
2 pieces grip bar (1 set)

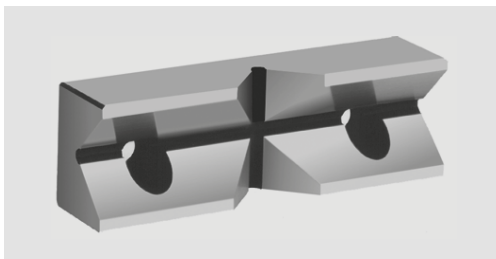
Clamping jaw with fluting



Type	Id. No.	Height [mm]	Depth [mm]	Thread	Id. No. Grippers
TTi-2G 90	462762	34	12	M10	462696
TTi-2G 125	462763	40	12	M10	462696
TTi-2G 160	462764	50	16	M12	462697

Consisting of:
1 piece clamping jaw

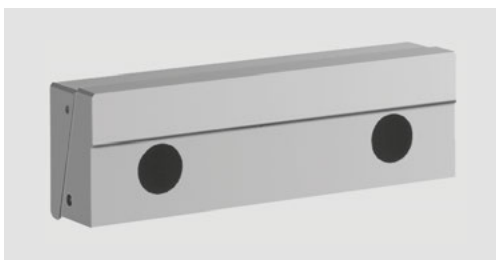
Prismatic jaw horizontal and vertical prisma 90°, hardened and grinded



Type	Id. No.	Height [mm]	Depth [mm]	Clamping width in mm	
				1 jaw	2 jaws
TTi-2G 90	462765	36	17	Ø 12-14	Ø 18-42
TTi-2G 125	462766	39.2	28	Ø 15-42	Ø 24-42
TTi-2G 160	462767	49.2	32	Ø 18-50	Ø 28-50

Consisting of:
1 piece clamping jaw

Pull-down jaw with interchangeable insert

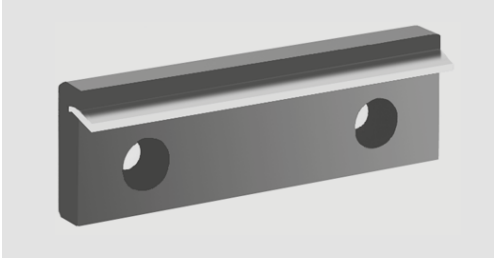


Type	Id. No.	Height [mm]	Depth [mm]
TTi-2G 90	462768	34	24
TTi-2G 125	462769	39.2	25
TTi-2G 160	462770	49.2	28

Consisting of:
1 piece clamping jaw

■ Jaws

Pull-down jaw for raw parts with spring blade



Type	Id. No.	Height [mm]	Depth [mm]
TTi-2G 90	462771	34	18
TTi-2G 125	462772	40	21
TTi-2G 160	462773	50	24

Consisting of:

1 piece clamping jaw

Multi-jaw for grip inserts, pendulum jaws and workstop elements



Type	Id. No. Fix jaw	Id. No. Mobil jaw	Id. No. Gripper	Width [mm]	Length [mm]	Height [mm]
TTi-2G 90	462774	462786	462789	90	145	25
TTi-2G 125	462775	462787	462789	105	170	25
TTi-2G 160	462776	462788	462790	115	200	25

Consisting of:

1 piece clamping jaw

Pendulum jaw suitable for multi-jaw (moveable jaw)



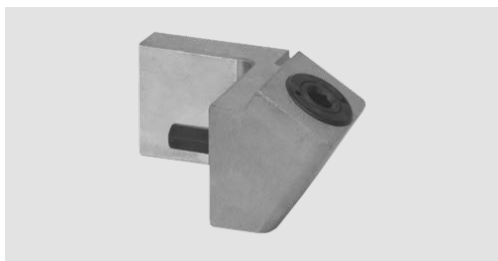
Type	Id. No.	Width [mm]	Length [mm]	Height [mm]
TTi-2G 90	462777	50	141	20
TTi-2G 125	462778	65	156	20
TTi-2G 160	462779	76	196	23

Consisting of:

1 piece clamping jaw

■ Accessories

Angle drive for TTi-2G NC clamping vises



Type	Id. No.	Length [mm]	SW
TTi-2G 90	462780	12	SW 12
TTi-2G 125	462781	33	SW 14
TTi-2G 160	462782	49	SW 14

Consisting of:
1 piece angle drive

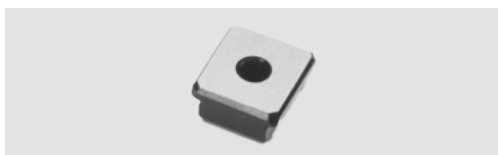
Hand crank standard version for TTi-2G NC clamping vises



Type	Id. No.	Length [mm]	SW
TTi-2G 90	462783	160	SW 12
TTi-2G 125	462784	160	SW 14
TTi-2G 160	462785	160	SW 14

Consisting of:
1 piece hand crank

T-nuts with screws



Consisting of:
1 t-nut incl. screw

Type	Id. No.					
	20x12 mm	20x14 mm	20x16 mm	20x18 mm	20x20 mm	20x22 mm
TTi-2G	465118	465119	465120	465121	465122	465123

■ Clamping against fixed jaw

Application/customer benefits

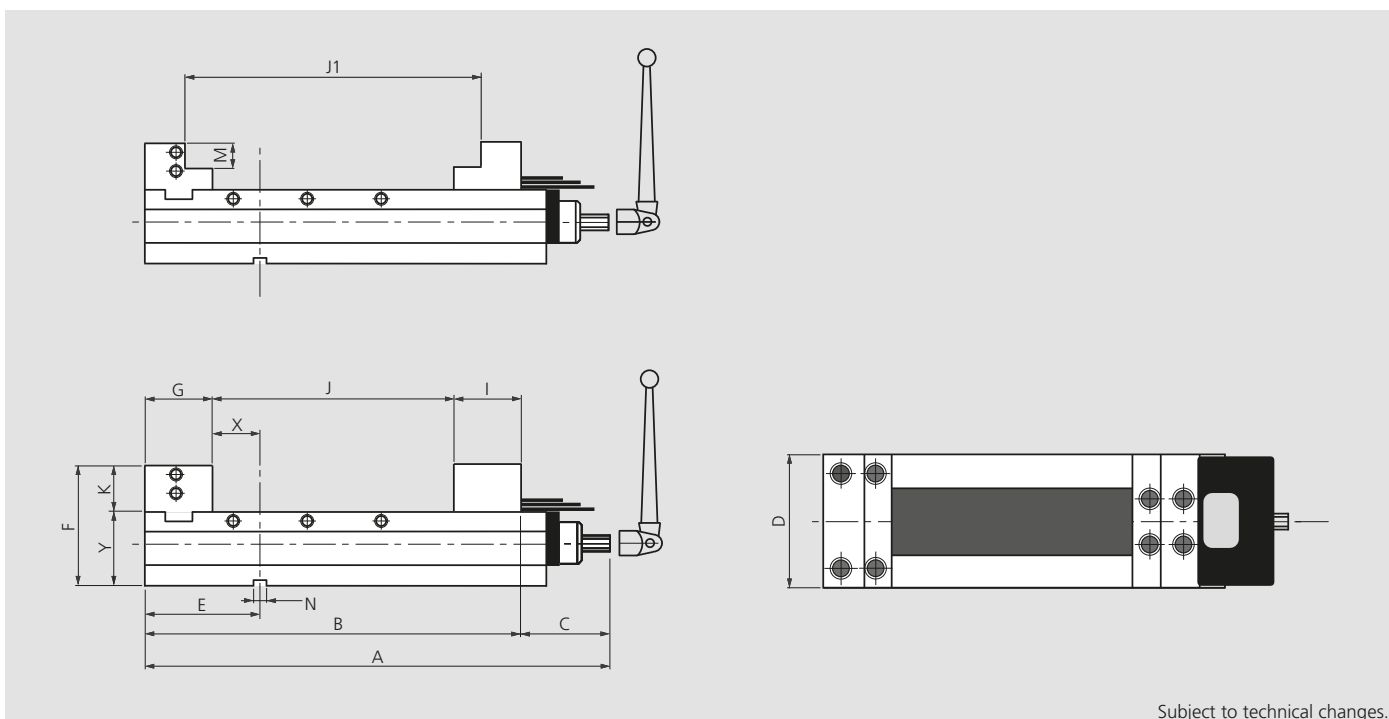
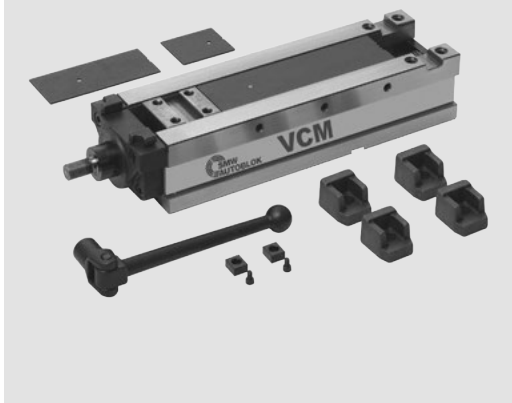
- Accurate and highest repeatability of the clamping process
- Easy and quick cleaning possibility
- Maximum flexibility due to the huge range of accessories

Technical features

- High clamping forces (up to 54 kN)

Standard equipment

VCM clamping vise together with hand crank, protection cover, fitting T-nuts with screws and 4 pieces of claw for fixing



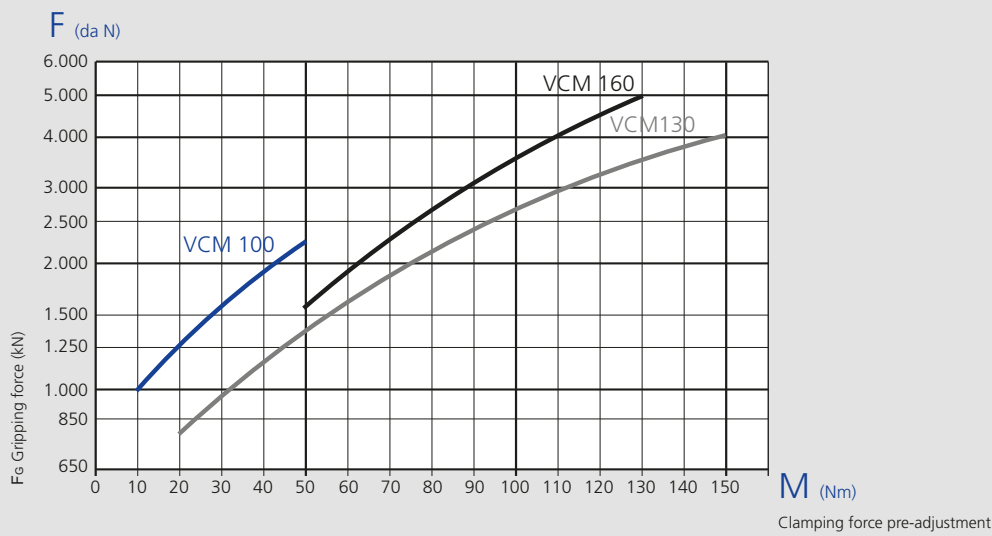
Subject to technical changes.

Order review

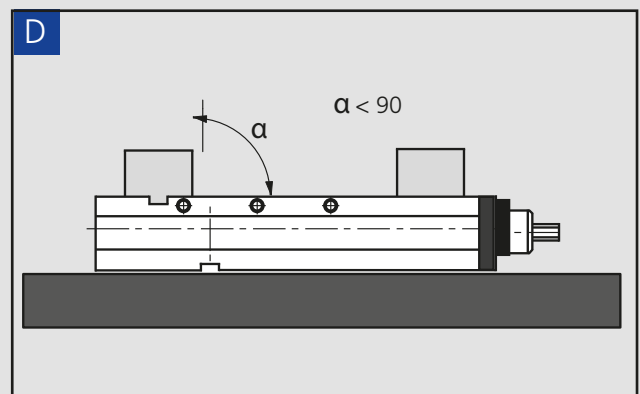
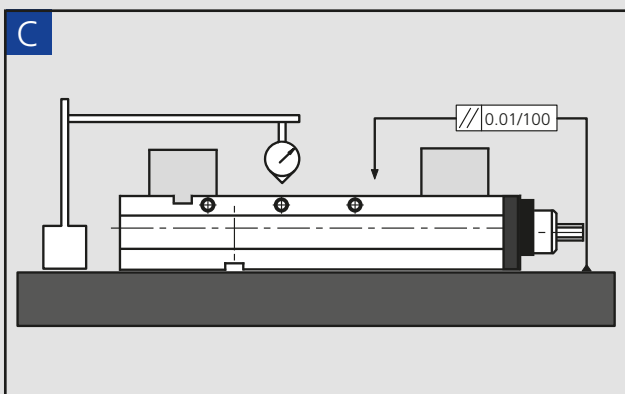
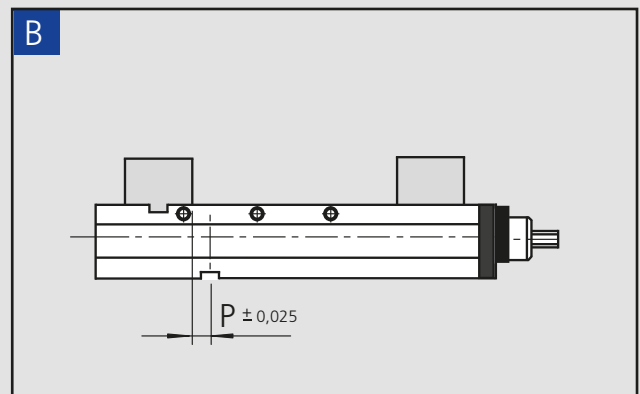
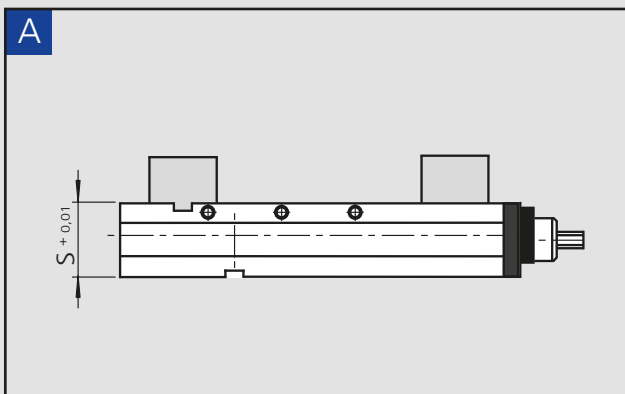
Type	Id. No.	A [mm]	B [mm]	C [mm]	D [mm]	E [mm]	F [mm]	G [mm]	J [mm]	J1 [mm]	I [mm]	K [mm]	M [mm]	N [mm]	X [mm]	Y [mm]	Clamp. force [kN]	Weight [kg]
VCM 100	77589060	398	300		101	124	130	78	155	213	64	45	25		45	85	20	22
VCM 130	77589160	508	410	98	131	149	147	83	250	315	74	52	30	18	65	95	40	40
VCM 160	77589260	573	475		161	152	160	86	300	370	86	55	30		65	105	50	62

■ Clamping against fixed jaw

Clamping force diagram

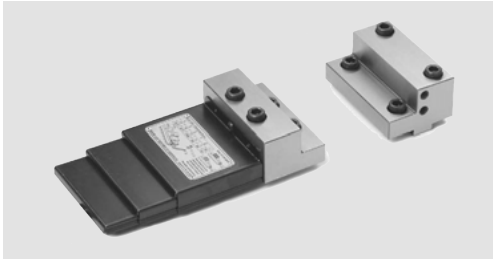


Form, position and dimensional tolerances for all NC clamping vises VCM



- Accessories
- Jaw sets

Fixed jaws, set



Type	Id. No.
VCM 100	58907110
VCM 130	58917110
VCM 160	58927110

Consisting of:
2 pieces fixed jaws
protective cover

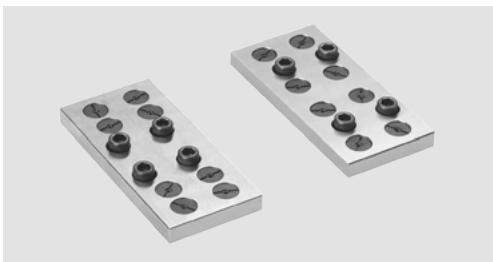
Block jaws, set



Type	Id. No.
VCM 100	58907210
VCM 130	58917210
VCM 160	58927210

Consisting of:
2 pieces block jaws
protective cover

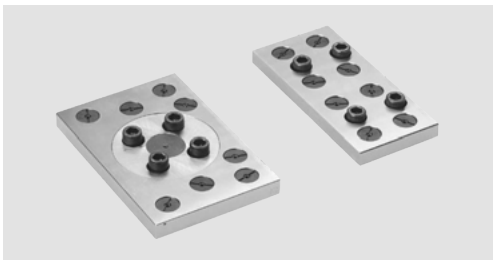
Jaws for gripper, set



Type	Id. No.
VCM 100	58907310
VCM 130	58917310
VCM 160	58927310

Consisting of:
2 pieces jaws for gripper

Floating jaws for gripper, set

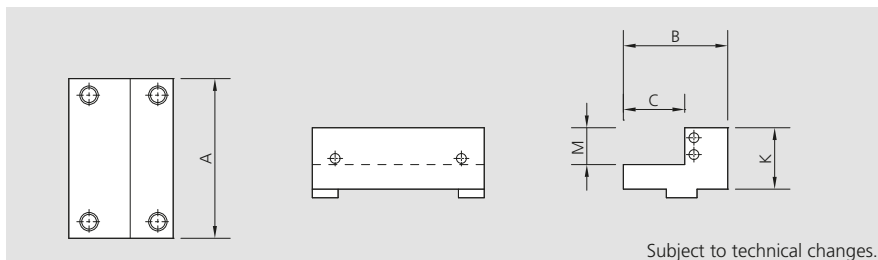


Type	Id. No.
VCM 100	58907320
VCM 130	58917320
VCM 160	58927320

Consisting of:
2 pieces floating jaws for gripper

- Accessories
- Jaws

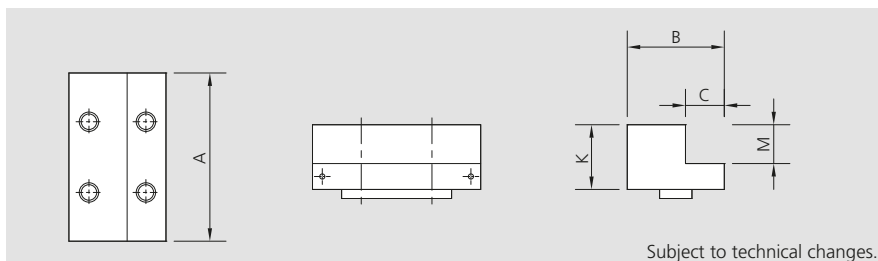
Stepped jaw, fixed



Subject to technical changes.

Type	Id. No.	A [mm]	B [mm]	C [mm]	K [mm]	M [mm]	Weight [kg]
VCM 100	58900210	100	78	32.5	45	25	2
VCM 130	58910210	130	83	35	52	30	3
VCM 160	58920210	160	86	35	95	30	4.2

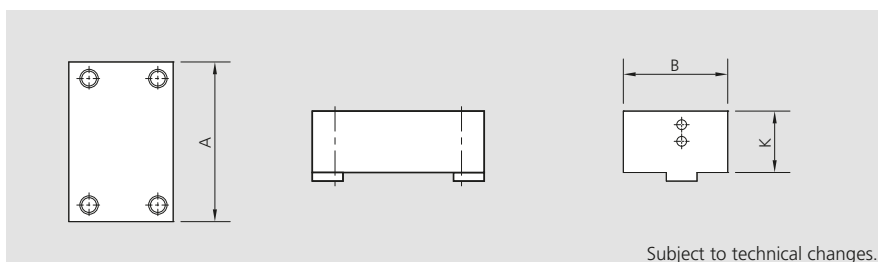
Stepped jaw, movable incl. protection cover



Subject to technical changes.

Type	Id. No.	A [mm]	B [mm]	C [mm]	K [mm]	M [mm]	Weight [kg]
VCM 100	58900310	100	64	26	45	25	1.5
VCM 130	58910310	130	74	30	52	30	2.8
VCM 160	58920310	160	86	35	55	30	4.2

Block jaw, fixed

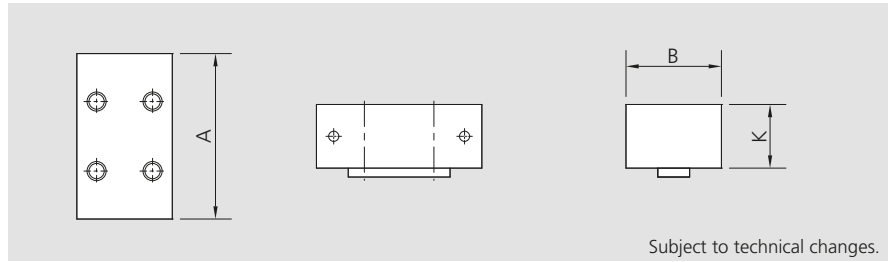


Subject to technical changes.

Type	Id. No.	A [mm]	B [mm]	K [mm]	Weight [kg]
VCM 100	58900220	100	78	45	3.0
VCM 130	58910220	130	83	52	4.0
VCM 160	58920220	160	86	55	6.0

- Accessories
- Jaws

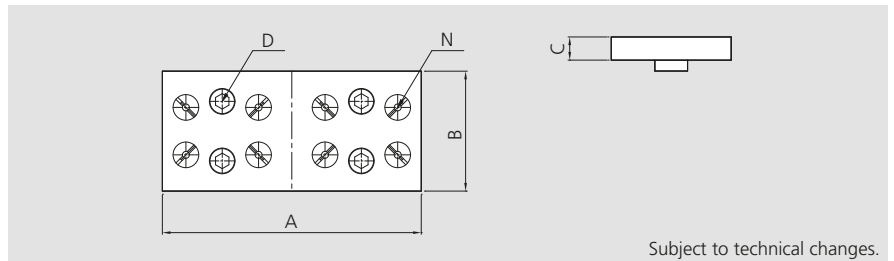
Block jaw, movable incl. protection cover



Subject to technical changes.

Type	Id. No.	A [mm]	B [mm]	K [mm]	Weight [kg]
VCM 100	58900320	100	64	45	2.5
VCM 130	58910320	130	74	52	4.5
VCM 160	58920320	160	86	55	6

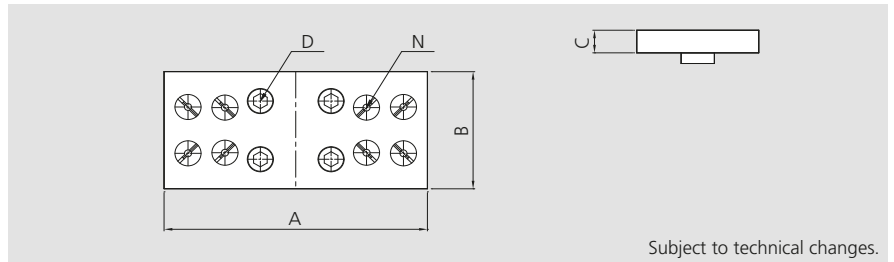
Fixed jaw for gripper



Subject to technical changes.

Type	Id. No.	A [mm]	B [mm]	C [mm]	D	N	Weight [kg]
VCM 100	58900230	160	73	22	M10 x 25	6	1.3
VCM 130	58910230	190	88	22	M12 x 30	8	2.2
VCM 160	58920230	220	88	22	M14 x 30	8	3

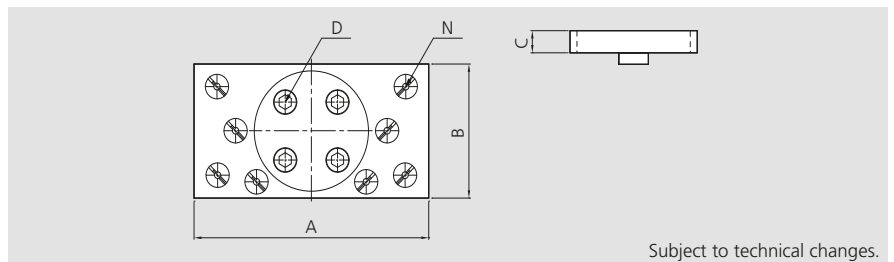
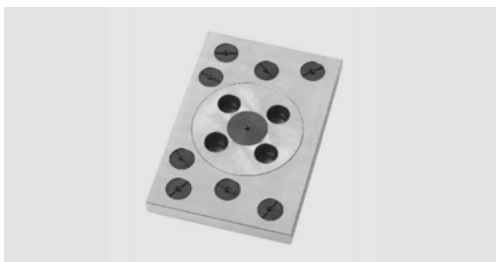
Movable jaw for gripper



Subject to technical changes.

Type	Id. No.	A [mm]	B [mm]	C [mm]	D	N	Weight [kg]
VCM 100	58900330	160	64	22	M10 x 25	6	1.4
VCM 130	58910330	190	88	22	M12 x 30	8	2.2
VCM 160	58920330	220	88	22	M14 x 30	8	3

Pendulum jaw gripper

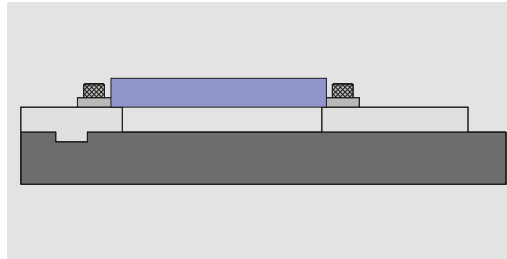


Subject to technical changes.

Type	Id. No.	A [mm]	B [mm]	C [mm]	D	N	Weight [kg]
VCM 100	58900340	160	88	22	M10 x 25 L	6	2.2
VCM 130	58910340	190	103	22	M12 x 30 L	8	3.2
VCM 160	58920340	220	128	22	M14 x 30 L	8	5.7

- Accessories
- Grippers

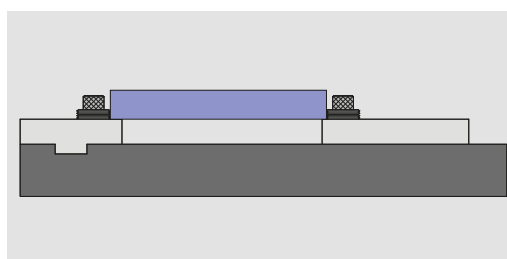
VCM grip insert smooth, height 11 mm



smooth
height 11 mm
set consisting of 4 grippers
and 4 fixing screws

Type	Id. No.
VCM	58906114

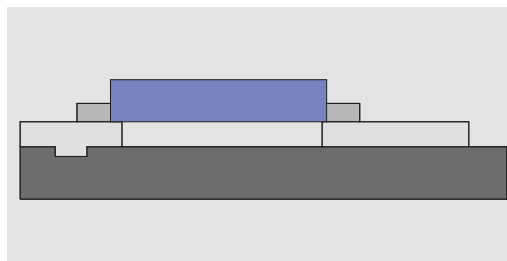
VCM grip insert serrated, height 11 mm



serrated
height 11 mm
set consisting of 4 grippers
and 4 fixing screws

Type	Id. No.
VCM	58906124

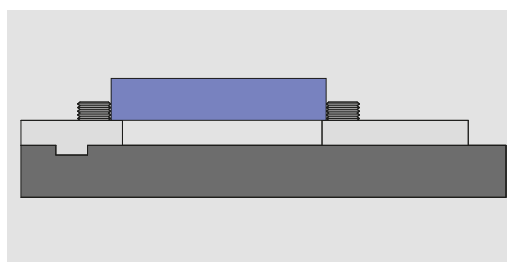
VCM grip insert smooth, height 19 mm



smooth
height 19 mm
set consisting of 4 grippers
and 4 fixing screws

Type	Id. No.
VCM	58906214

VCM grip insert serrated, height 19 mm

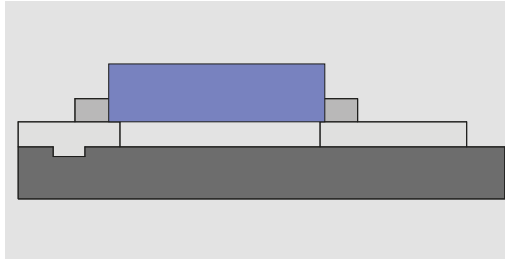
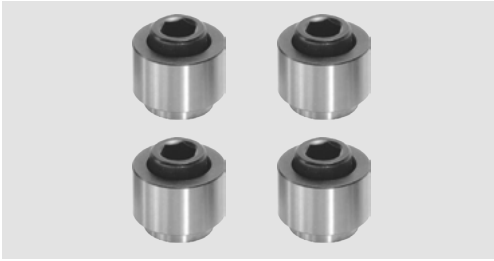


serrated
height 19 mm
set consisting of 4 grippers
and 4 fixing screws

Type	Id. No.
VCM	58906224

- Accessories
- Grippers

VCM Grip insert smooth, height 24 mm



smooth
height 24 mm
set consisting of 4 grippers
and 4 fixing screws

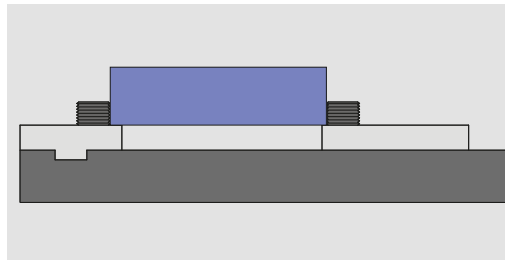
Type

Id. No.

VCM

58906314

VCM Grip insert serrated, height 24 mm



serrated
height 24 mm
set consisting of 4 grippers
and 4 fixing screws

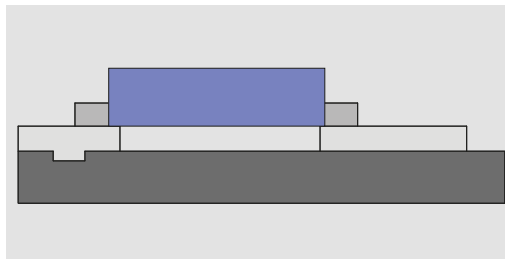
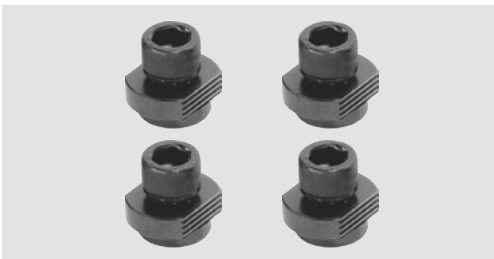
Type

Id. No.

VCM

58906324

VCM Grip insert smooth-serrated, height 11 mm



smooth-serrated
height 11 mm
set consisting of 4 grippers
and 4 fixing screws

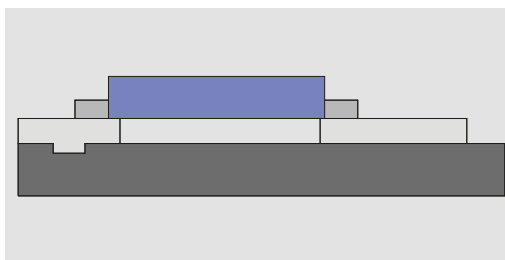
Type

Id. No.

VCM

58906414

VCM Grip insert smooth, soft, height 25 mm



smooth
soft
height 25 mm
set consisting of 4 grippers
and 4 fixing screws

Type

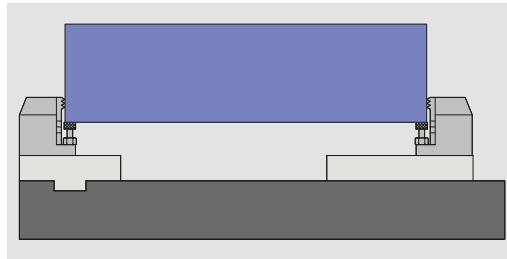
Id. No.

VCM

58906514

- Accessories
- Grippers

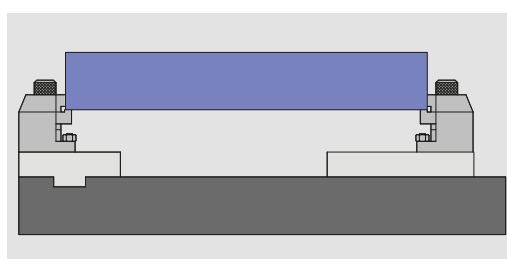
VCM grip insert smooth, adjustable, height 50 mm



smooth, adjustable height 50 mm set consisting of 4 grippers and 4 fixing screws

Type	Id. No.
VCM	58906724

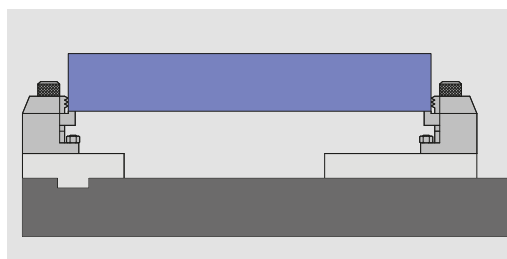
VCM grip insert smooth, with step, height 50 mm



smooth, adjustable height 50 mm set consisting of 4 grippers and 4 fixing screws

Type	Id. No.
VCM	58906814

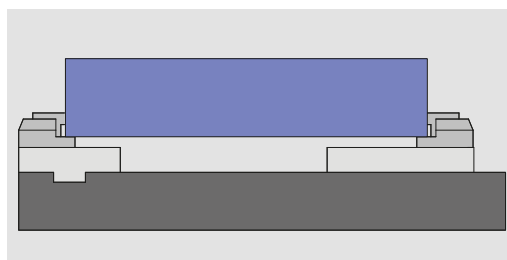
VCM grip insert serrated, with step, height 50 mm



serrated, adjustable height 50 mm set consisting of 4 grippers and 4 fixing screws

Type	Id. No.
VCM	58906824

VCM grip insert smooth, adjustable, height 25 mm



smooth, adjustable height 25 mm set consisting of 4 grippers and 4 fixing screws

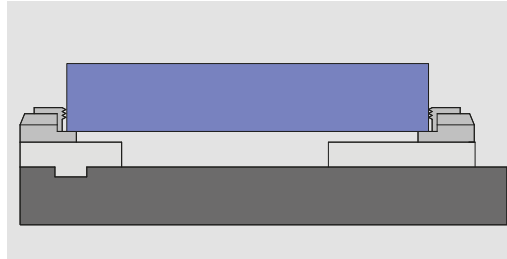
Type	Id. No.
VCM	58906614

VCM

NC clamping vise without power transmitter

- Accessories
- Grippers

VCM grip insert serrated, adjustable, height 25 mm



serrated
adjustable
height 25 mm
set consisting of 4 grippers
and 4 fixing screws

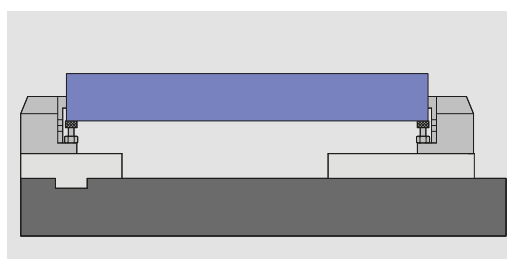
Type

Id. No.

VCM

58906624

VCM grip insert adjustable, smooth, height 50 mm



adjustable
smooth
height 50 mm
set consisting of 4 grippers
and 4 fixing screws

Type

Id. No.

VCM

58906714

VCM grip insert, set

Type

Id. No.

VCM

58906009

Consisting of 14 sets, each of 4 pieces grip inserts with fixing screws

Application examples



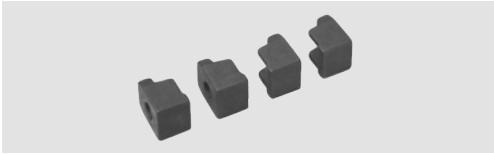
■ Accessories

Hand crank



Type	Id. No.
VCM 100	58901910
VCM 130	58901910
VCM 160	58901910

4 pieces of claws



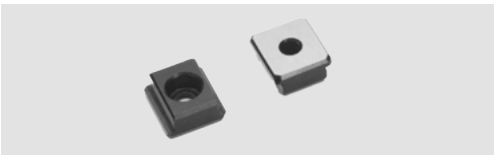
Type	Id. No.
VCM 100	58902709
VCM 130	58902709
VCM 160	58902709

Torque wrench



Type	Id. No.
VCM 100	51501010
VCM 130	51501010
VCM 160	51501010

Fitting T-nuts (1 pair) with screws



Type	Id. No.					
	18x12 mm	18x14 mm	18x16 mm	18x18 mm	18x20 mm	18x22 mm
VCM	58901392	58901393	58901394	58901395	58901396	58901397

Technical drawings of the VCM vise showing front, side, and top views with dimensions A, ØB, ØC, and D.

Type	A	ØB	ØC	D
VCM 100	0-220	80-250		0-150
VCM 130	0-320	90-350	0-90	0-210
VCM 160	0-380	90-420	0-90	0-240