

Stationary chucks pneumatic / hydraulic



USC

With stroke control

Pneumatic static cylinder
Ø 140 - 260 mm

- Unit with static cylinder
- With stroke control
- Can be equipped with different types of chucks

Page 352



US-CL

With 2 jaws
long stroke chucks

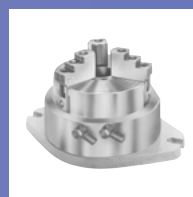
Stationary cylinder and chuck unit, hydraulic
Ø 80 - 315 mm

- Unit with static cylinder and chuck
- Closed center chucks type CL/AN/AL

Page 354

US-A

With 3 jaws long or
normal stroke chucks



STP

INCH SERRATION
3 jaws

Stationary chuck, pneumatic
Ø 125 - 280 mm

- Built-in pneumatic cylinder
- With through-hole

Page 362



M2-PB

Fixture
with 2 chucks

Multiple chucks on fixtures, pneumatic
Ø 130 - 315 mm

- Built-in pneumatic cylinders
- 2 and 3 jaws

Page 364



US - large diameters

Pneumatic static cylinder
2 or 3 or 4 jaws

Pneumatic static cylinder and chuck unit
Ø 400 - 800 mm

- Normal or long stroke depending on chuck model
- 2/3/4 jaws depending on chuck model & diameter
- Sealed or not sealed chucks depending on chuck model

Page 356



PBI-D

INCH SERRATION
2 or 3 jaws

Chuck for indexing tables
Ø 165 - 315 mm

- Manifold for air supply (only for low r.p.m.)
- Built-in cylinder
- 2 and 3 jaws

Page 366

PBI-C

TONGUE & GROOVE
3 jaws



HB-D

INCH SERRATION
2 or 3 jaws

Stationary chuck, hydraulic
Ø 130 - 315 mm

- Built-in hydraulic cylinder
- 2 and 3 jaws

Page 358

HB-C

TONGUE & GROOVE
3 jaws



Centco4

2 + 2 self centering

4-jaw chuck Ø 210 - 630 mm

- Independent self centering clamping in 2 axis via 1 central actuating mechanism
- Centrifugal force compensation
- 2 + 2 jaws

Page 368



PB-D

INCH SERRATION
2 or 3 jaws

Stationary chuck, pneumatic
Ø 130 - 315 mm

- Built-in pneumatic cylinder
- 2 and 3 jaws

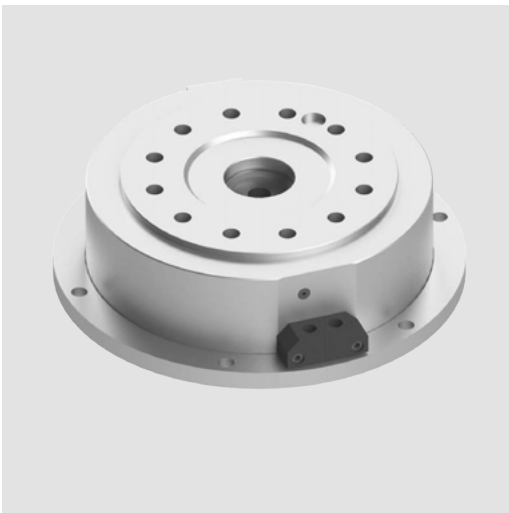
Page 360

PB-C

TONGUE & GROOVE
3 jaws

Pneumatic static cylinder

- Can be equipped with different types of chucks
- With stroke control



Application/customer benefits

- Gripping of components on vertical or horizontal machining centers

Technical features

- Standard pneumatic cylinder can be equipped with various type of chucks:
 - 2 / 3 / 4 jaws versions depending on chuck model and diameter
 - Sealed or unsealed chucks
 - With serrated or Tongue & Groove master jaw available
 - Normal or long stroke depending on chuck model and diameter
- Permanent air pressure required
- Optional SAB safety valve to hold pressure during pallet transfer

Remark: The clamping unit is made of static cylinder + connection kit + chuck to be selected.

For chuck details, please see the technical data of the selected chuck.

Standard equipment

Static cylinder
the connection kit must be added,
see the table on next page

Ordering example

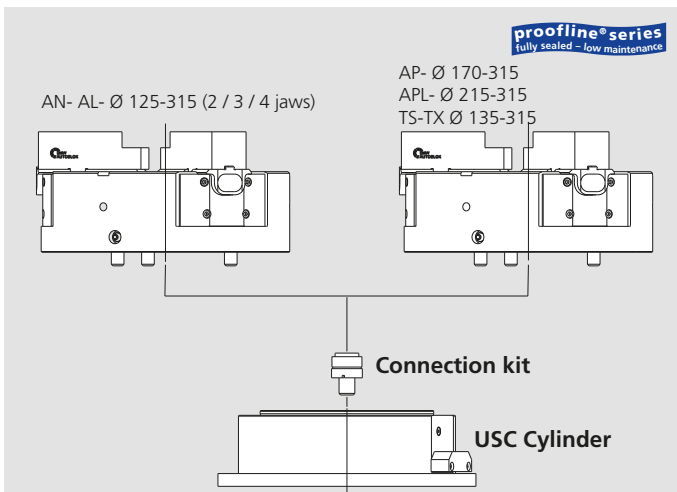
Please see the below table for part numbers and part descriptions

Accessories

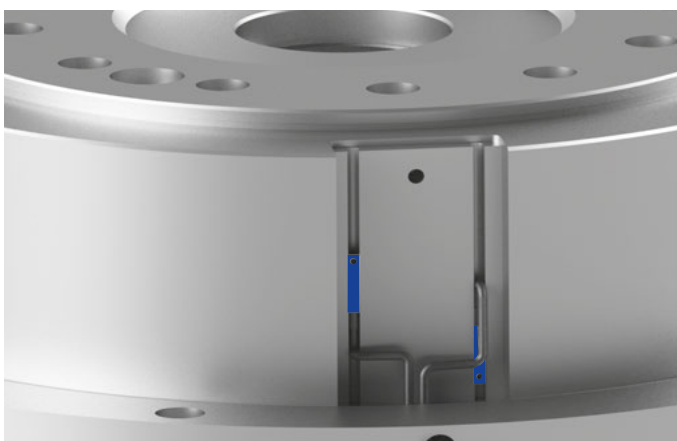
Valve SAB1 Id. No. 27581610 for USC 140/170

Valve SAB2 Id. No. 27581620 for USC 210/260

Mounting brackets



- **USC-AN** = cylinder equipped with a 2 / 3 jaw chuck type AN- (normal stroke). Chuck until to Ø 315 mm
- **USC-AL** = cylinder equipped with a 2 / 3 jaw chuck type AL- (long stroke). Chuck until to Ø 315 mm
- **USC-TS** = cylinder equipped with a 2 / 3 jaw chuck type TS- Chuck from Ø 135 to 315 mm
- **USC-TX** = cylinder equipped with a 3 jaw chuck. Chuck from Ø 170 to 315 mm
- **USC-AP** = cylinder equipped with a 3 jaw chuck type AP- (normal stroke). Chuck until to Ø 315 mm
- **USC-APL** = cylinder equipped with a 3 jaw chuck type APL- (long stroke). Chuck Ø 170 to 315 mm



Stroke control

The stroke control system consists of two built in magnets and two external sensors (Id.-Nr. 71834910) reading the axial position of the cylinder piston and consequently of chuck jaws mounted on it.

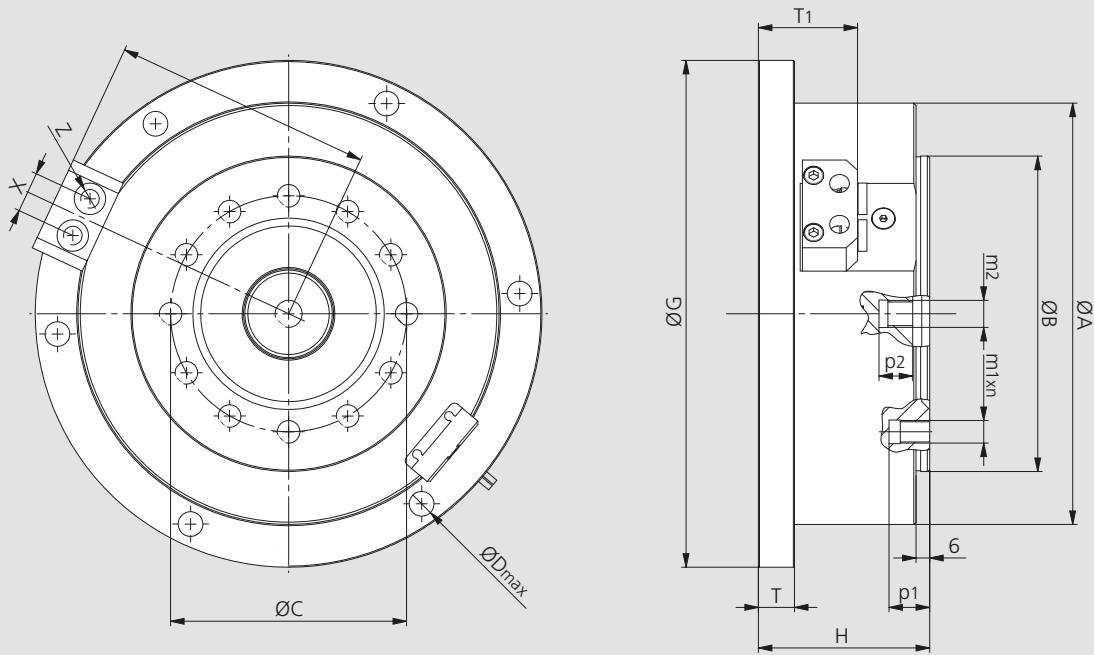
The stroke control gives the following signals: „chuck fully open“, „chuck fully closed“ or „part clamped“ positions.

Technical data

SMW-AUTOBLOK Type Id. No.		USC 140 97501407	USC 170 97501702	USC 210 97502106	USC 260 97502601
Piston area-chuck (open)	cm ²	133	189	269	434
Piston area-chuck (closed)	cm ²	126	176	249	409
Max. operating pressure	bar	7	7	7	7
Piston stroke	mm	17	22	26	31
Pushforce at 6 bar	kN	8	11	16	26
Pullforce at 6 bar	kN	7.5	10.5	15	24.5
Cylinder unit mass	kg	3.3	5	7	12.5

- Can be equipped with different types of chucks
- With stroke control

Pneumatic static cylinder



Subject to technical changes.
For more detailed information please ask our customer service.

SMW-AUTOBLOK Type Id. No.		USC 140 97501407	USC 170 97501702	USC 210 97502106	USC 260 97502601
A	mm	162	187	217	275
B	mm	115	140	170	220
C	mm	82.6	104.8	133.4	171.4
D	mm	11	11	11	13
G	mm	200	225	255	327
H	mm	61.5	76	83	95
Q	mm	98	110.5	129.5	158.5
T	mm	16	16	16	16
T1	mm	38.5	40.5	43.5	43.5
X	mm	18	18	22	22
Z	inch	1/8"	1/8"	1/4"	1/4"
m1	mm	M10	M10	M12	M16
m2	mm	M10	M12	M16	M20
n	mm	12x	12x	12x	12x
p1	mm	14	18	19	23
p2	mm	18	15	21	25

Ordering review connection kit

Size	125 AN-AL	135 TS	165 AN-AL	170 AP	170 TS/TX	210 AN-AL	210 TS-TX	215 AP-APL	250 AN-AL	250 TS-TX	260 AP-APL	315 AN-AL	315 TS-TX	315 AP-APL
USC 140	75511410	75511470	-	-	-	-	-	-	-	-	-	-	-	-
USC 170	-	-	75511760	75511760	75511770	-	-	-	-	-	-	-	-	-
USC 210	-	-	-	-	-	75512110	75512170	75512160	-	-	-	-	-	-
USC 260	-	-	-	-	-	-	-	-	75512610	75512670	75512660	75512620	75512670	75512660

- If the cylinder operates an AN / AL chuck (with 2 / 3 / 4 jaws and various jaw types), the chuck must be ordered separately.
- If the cylinder operates an AP / APL chuck (only 3 jaws available and various jaw types), the chuck must be ordered separately.
- If the cylinder operates a TS / TX chuck (only 3 jaws available and various jaw types), the chuck must be ordered separately.
- For technical information on the chucks, please see the specific catalogue page. (more information at general catalog turning).
- For the chucks Id. Numbers, please see our price lists or ask a quotation to your nearest SMW-AUTOBLOK office.

JAWS-CATALOG

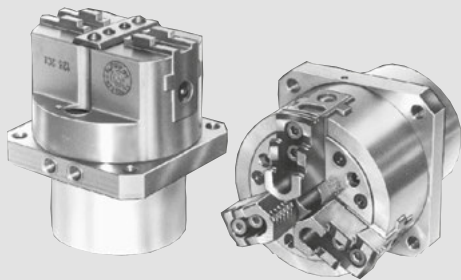
Request or download:
www.smw-autoblok.de



With 2 jaw long stroke chuck

With 3 jaw long or normal stroke chuck

- Hydraulic cylinder module + chuck
- Closed center chucks type CL / AN / AL



Application/customer benefits

- Gripping units designed to suit special purpose machines and transfer lines
- Also used as loading chucks to handle workpieces

Technical features

- Stationary hydraulic cylinder + chuck unit consisting of a modular cylinder and standard 2- or 3-jaw chuck
- Permanent oil pressure required
- For chuck details please see technical data of the selected chuck

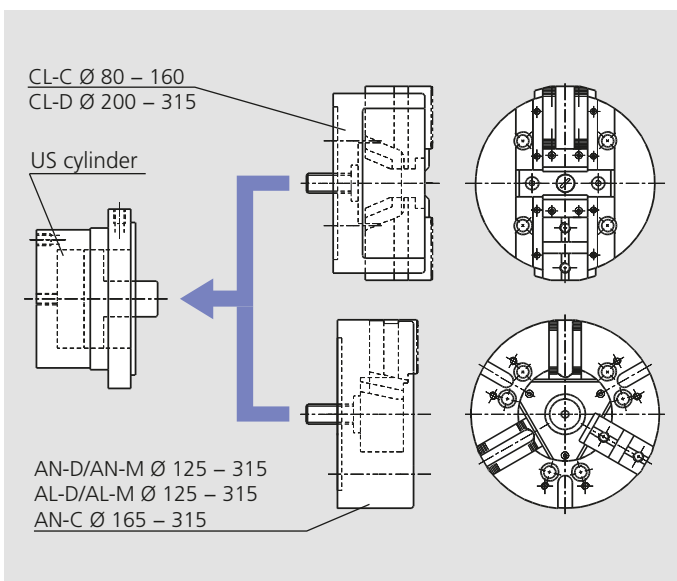
Remark: when ordering please specify the position of the oil connectors (on the side or on the back)

Standard equipment

Standard chuck with cylinder and connecting parts

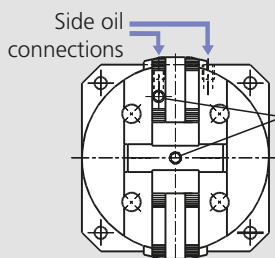
Ordering example

US 125-CLC with rear oil connection, or
US 250-AND with side oil connection and
chuck 90° revolved

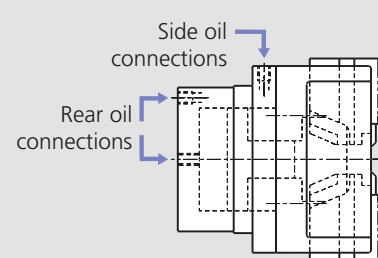
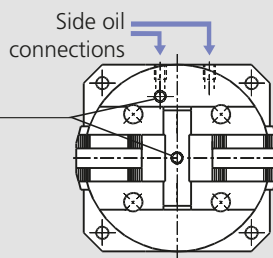


- **US-CL-C** = cylinder equipped with a 2 jaw chuck type CL-C (long stroke / tongue & groove). Chuck Ø 80 to 160 mm.
- **US-CL-D** = cylinder equipped with a 2 jaw chuck type CL-D (long stroke / inch serration). Chuck Ø 200 to 315 mm.
- **US-AN-D** = cylinder equipped with a 3 jaw chuck type AN-D (normal stroke / inch serration). Chuck Ø 125 to 315 mm.
- **US-AN-M** = cylinder equipped with a 3 jaw chuck type AN-M (normal stroke / metric serration). Chuck Ø 125 to 315 mm.
- **US-AL-D** = cylinder equipped with a 3 jaw chuck type AL-D (long stroke / inch serration). Chuck Ø 125 to 315 mm.
- **US-AL-M** = cylinder equipped with a 3 jaw chuck type AL-M (long stroke / metric serration). Chuck Ø 125 to 315 mm.
- **US-AN-C** = cylinder equipped with a 3 jaw chuck type AN-C (normal stroke / tongue & groove). Chuck Ø 165 to 315 mm.
- **Special units** = on request the US cylinder can be equipped with other chucks, for example with a quick jaw change chuck type AN-RM with stationary cylinder available.

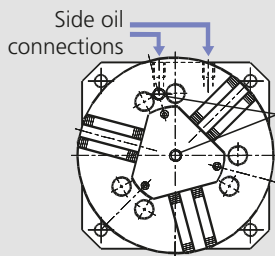
CL chuck in standard position



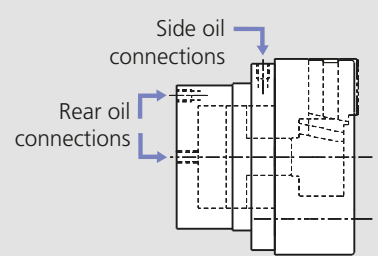
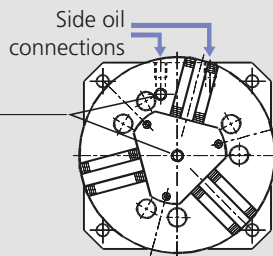
CL chuck 90° revolved



AN / AL chuck in standard position



AN / AL chuck 90° revolved



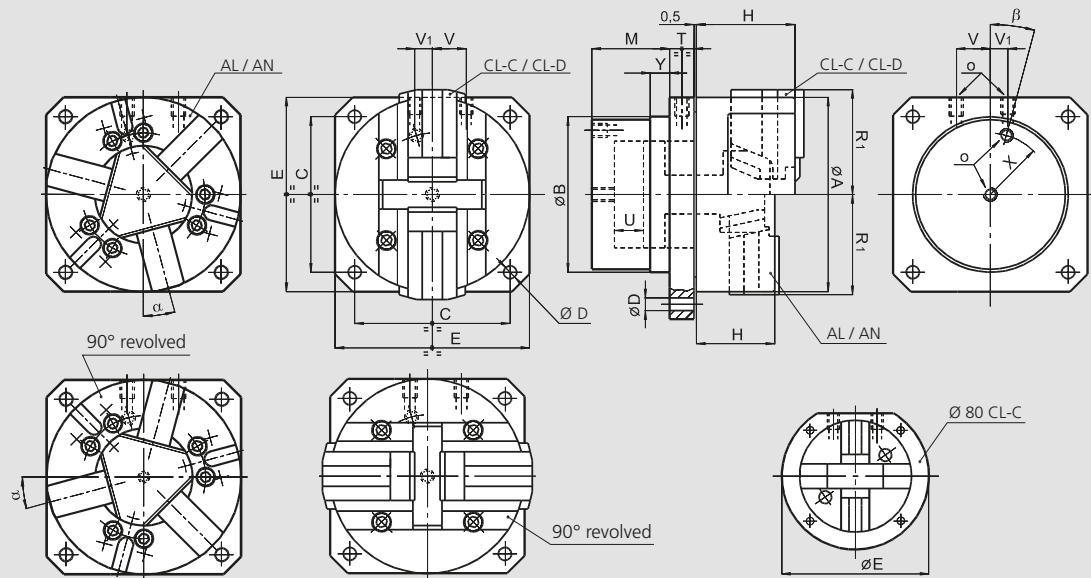
- The chuck can be mounted on the cylinder 90° revolved if the standard position creates interferences with the working cycle. Please specify in the order, if a revolved position is needed.

- The oil connections can be on the side or on the back of the cylinder in order to ease the installation of the gripping unit. Please specify in the order, which version is preferred.

- Hydraulic cylinder module + chuck
- Closed center chucks type CL / AN / AL

With 2 jaw long stroke chuck

With 3 jaw long or normal stroke chuck



Subject to technical changes.
For more detailed information please ask our customer service.

US actuating cylinder dimensions

SMW-AUTOBLOK cylinder		US 80	US 100	US 125	US 160 US 165	US 200	US 250	US 315
Id. No. CL		77755008	77755010	77755013	77755016	77755120	77755025	77755031
Id. No. AL / AN		77755008	77755010	77755113	77755016	77755120	77755025	77755031
	B h7	mm 70	84	106	128	158	185	185
	C	mm 66	84	104	130	160	200	250
	D	mm 7	9	11	11	13.5	17	17
	E	mm 105	100	130	160	200	250	315
	M	mm 45	52	60	70	80	90	90
Oil connections	O	inch 1/8 BSP	1/8 BSP	1/4 BSP	1/4 BSP	3/8 BSP	3/8 BSP	3/8 BSP
	T	mm 16	16	20	20	25	25	25
	U	mm 11	14	20	25	30	35	35
	V	mm 15	18	12	28	35	41	41
	V1	mm 15	18	12	15	18	15	15
	X	mm 27	33	43	52	63	75	75
	Y	mm 10	10	10	20	20	20	20
	β	deg. 30°	30°	15°	15°	0°	0°	0°
Piston area		cm ² 16	25	42	68	112	166	166

Units with CL-C and CL-D chucks (more information at general catalog turning page 84)

SMW-AUTOBLOK Type		US 80-CL-C	US 100-CL-C	US 125-CL-C	US 160-CL-C	US 200-CL-D	US 250-CL-D	US 315-CL-D
	A	mm 80	100	125	160	200	250	315
	H	mm 45	54	76	92	103	109	114
Chuck open	R1	mm 40	50	68	87	108	132	166
Max. pressure		bar 38	36	36	37	32	30	36
Max. gripping force		kN 9	14	24	40	55	78	95

Units with AN-D / AN-M / AN-C chucks (more information at general catalog turning page 42 and 46)

SMW-AUTOBLOK Type		US 125-AN-D US 125-AN-M	US 165-AN-D US 165-AN-M US 165-AN-C	US 210-AN-D US 210-AN-M US 210-AN-C	US 250-AN-D US 250-AN-M US 250-AN-C	US 315-AN-D US 315-AN-M US 315-AN-C
	A	mm 127	165	210	254	315
	H	mm 57	71	85	95	105
Chuck open	R1	mm 64	83	105	128	158
	α	deg. 0°	15°	15°	15°	15°
Max. pressure		bar 47	36	31	28	36
Max. gripping force		kN 56	70	105	140	180

Units with AL-D / AL-M chucks (more information at general catalog turning page 44)

SMW-AUTOBLOK Type		US 125-AL-D US 125-AL-M	US 165-AL-D US 165-AL-M	US 210-AL-D US 210-AL-M	US 250-AL-D US 250-AL-M	US 315-AL-D US 315-AL-M
	A	mm 127	165	210	254	315
	H	mm 57	71	85	95	105
Chuck open	R1	mm 67	86	109	133	164
	α	deg. 0°	15°	15°	15°	15°
Max. pressure		bar 60	44	45	39	45
Max. gripping force		kN 45	54	90	120	135

JAWS-CATALOG
Request or
download:
www.smw-autoblok.de

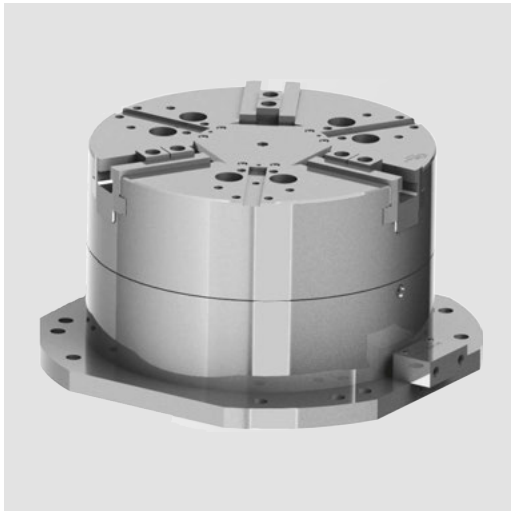


US - large diameters

Pneumatic static cylinder
for 2 or 3 or 4 jaws

Stationary cylinder + chuck unit Ø 400 - 800 mm

- Option for serrated or Tongue & Groove jaws
- Option of sealed or unsealed chucks
- Option of 2 / 3 / 4 jaws depending on chuck size and model
- Option of long or normal stroke depending on chuck size & model



Application/customer benefits

- Gripping of large components on vertical or horizontal machining centers

Technical features

- Standard pneumatic cylinder to be equipped with various type of chucks:
 - 2 / 3 / 4 jaws versions depending on chuck model and diameter
 - Chucks sealed or not sealed with serrated or TONGUE & GROOVE master jaw available
 - Normal or long stroke depending on chuck model and diameter
- Permanent air pressure required
- Optional SAB safety valve to hold pressure during pallet transfer

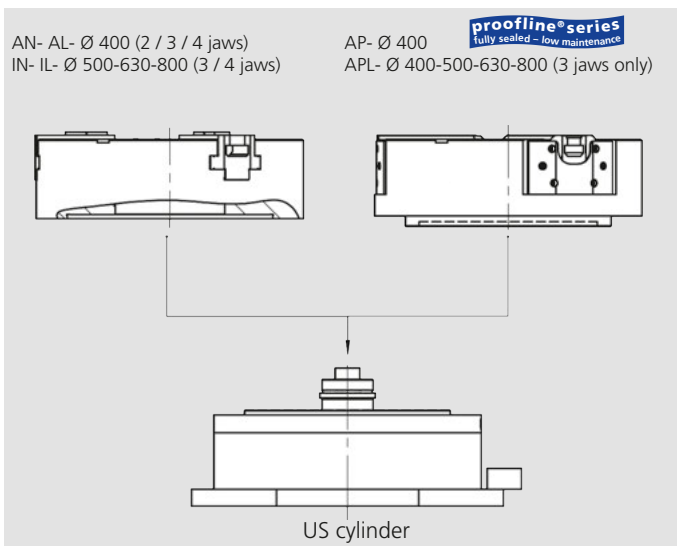
Remark: the clamping unit is made of standard cylinder + eventual connection kit (for AP and APL chucks only) + chuck to be selected.
For chuck details, please see the technical data of the selected chuck

Standard equipment

Static cylinder with connecting parts for IN / IL chucks.
For AP and APL chucks a specific connecting kit must be added

Ordering example

US-400-AN



- **US-AN** = cylinder equipped with a 3-jaw chuck type AN- (normal stroke). Chuck Ø 400 mm.
- **US-AL** = cylinder equipped with a 3-jaw chuck type AL- (long stroke). Chuck Ø 400 mm.
- **US-IN** = cylinder equipped with a 3-jaw chuck type IN- (normal stroke). Chuck Ø 500 to 800 mm.
- **US-IL** = cylinder equipped with a 3-jaw chuck type IL- (long stroke). Chuck Ø 500 to 800 mm.
- **US-AP** = cylinder equipped with a 3-jaw chuck type AP- (normal stroke). Chuck Ø 400 mm. **proofline® series** fully sealed - low maintenance
- **US-APL** = cylinder equipped with a 3-jaw chuck type APL- (long stroke). Chuck Ø 400 to 800 mm. **proofline® series** fully sealed - low maintenance

Technical data

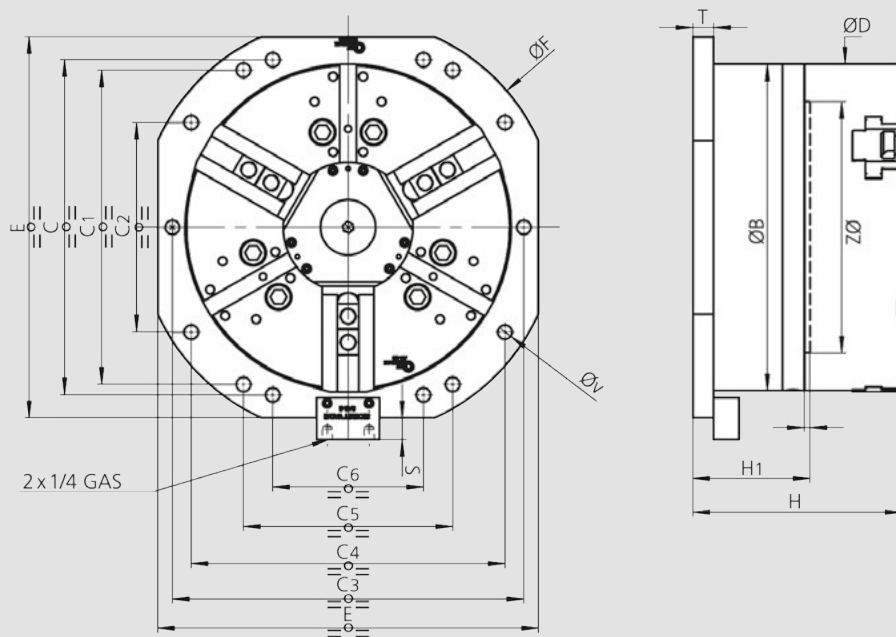
SMW-AUTOBLOK Type		US-400 AN / AL	US-400 AP / APL	US-500 APL	US-630 APL	US-800 APL	US-500 IN / IL	US-630 IN / IL	US-800 IN / IL
Piston area-chuck (open)	cm ²	800	800	1256	1256	1256	1256	1256	1256
Piston area-chuck (closed)	cm ²	760	760	1211	1211	1211	1211	1211	1211
Max. operating pressure	bar	7	7	7	7	7	7	7	7
Mass of cylinder unit	kg	118	118	175	175	175	175	175	175
Gripping force at 6 bar "N"	kN	135	125	-	-	-	175	175	175
Gripping force at 6 bar "L"	kN	80	80	130	130	130	130	130	130

Stationary cylinder + chuck unit Ø 400 - 800 mm

- Option for serrated or Tongue & Groove jaws
- Option of sealed or unsealed chucks
- Option of 2 / 3 / 4 jaws depending on chuck size and model
- Option of long or normal stroke depending on chuck size & model

US - large diameters

Pneumatic static cylinder
for 2 or 3 or 4 jaws



Subject to technical changes.
For more detailed information please ask our customer service.

SMW-AUTOBLOK Type		US-400 AN/AL	US-400 AP/APL	US-500 APL	US-630 APL	US-800 APL	US-500 IN/IL	US-630 IN/IL	US-800 IN/IL
Ø. D. cylinder	B	mm	390	390	475	475	475	475	475
	C	mm	400	400	-	-	-	-	-
	C1	mm	375	375	300	300	300	300	300
	C2	mm	250	250	-	-	-	-	-
	C3	mm	-	-	500	500	500	500	500
	C4	mm	375	375	400	400	400	400	400
	C5	mm	250	250	-	-	-	-	-
Ø chuck	C6	mm	180	180	-	-	-	-	-
	D	mm	390	390	500	630	800	510	630
	E	mm	455	455	525	525	525	525	525
	E1	mm	-	-	-	-	-	-	-
	ØF	mm	500	500	538	538	538	538	538
	H	mm	250	273	300	310	330	270	290
	H1	mm	140	140	146	146	146	146	146
	I	mm	7	7	7	7	7	7	7
	T	mm	25	25	25	25	25	25	25
	ØV	mm	17	17	17	17	17	17	17
	ØZ h7	mm	300	300	380	380	380	380	380

Ordering review

SMW-AUTOBLOK Size	400	500	630	800
A: Cylinder Id. No. (for all versions)	97504004	97506302	97506302	97506302
B: Kit Id. No. (only for „AP“ & „APL“ chucks)	97634004	97635002	97636302	97646302

- If the cylinder operates a IN / IL or a AN / AL chuck (with 2 / 3 / 4 jaws and various jaw types), only the p/n in line A must be purchased. The chuck must be ordered separately.
- If the cylinder operates a AP / APL chuck (only 3 jaws available and various jaw types), both p/ns in line A and B must be purchased. The chuck must be ordered separately.
- For technical information on the chucks, please see the specific catalogue page. (more information at general catalog turning).
- For the chucks p/ns, please see our price lists or ask a quotation to your nearest SMW-AUTOBLOK office.

JAWS-CATALOG
Request or
download:
www.smw-autoblok.de



HB-D

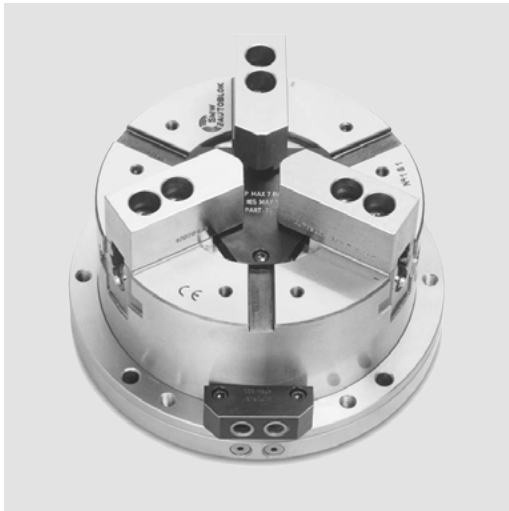
INCH SERRATION
2 or 3 jaws

HB-C

TONGUE & GROOVE
3 jaws

Stationary chuck, hydraulic Ø 130 - 315 mm

- Built-in hydraulic cylinder
- 2 and 3 jaws



Application/customer benefits

- Stationary hydraulic chuck for self centering clamping of parts on milling machines, machining centers and special machines

HB-D: INCH SERRATED master jaws (1/16" x 90°)

HB-C: TONGUE & GROOVE master jaws (American standard)

HB-M: METRIC SERRATED master jaws (1.5 mm x 60°) **on request from Ø 165**

Technical features

- Stationary chuck consisting of a 2- or 3-jaw self centering chuck with built-in hydraulic cylinder
- Compact design
- Case hardened body to assure highest precision and long chuck life

Standard equipment

Stationary chuck
1 set T-nuts with bolts
(HB-C excluded)
1 set of soft blank top jaws
(HB-C excluded)

Ordering example

Stationary chuck HB-C 250 (3 jaws)
or
Stationary chuck HBL-D2 165 (2 jaws)

Technical data

SMW-AUTOBLOK Type		HB-D 130	HB-D 165 HB-C 165	HB-D 210 HB-C 210	HB-D 250 HB-C 250	HB-D 315 HB-C 315
Radial jaw stroke	mm	3	3.2	4	4.6	5.5
Radial jaw stroke HBL-D2 (2 jaws)*	mm	5.6	6	7.5	8.8	10.5
Piston area	cm ²	63	79	114	167	203
Max. operating pressure	bar	30	30	30	30	30
Gripping force at 25 bar	kN	50	55	85	125	150
Gripping force at 25 bar HBL-D2 (2 jaws)*	kN	28	35	52	75	90
Weight (without top jaws)	kg	9.5	18	30	44	69

* The 2 jaw fixture is available with serrated master jaws (inch or metric) and long stroke only.



JAWS-CATALOG

Request or
download:
www.smw-autoblok.de

Stationary chuck, hydraulic Ø 130 - 315 mm

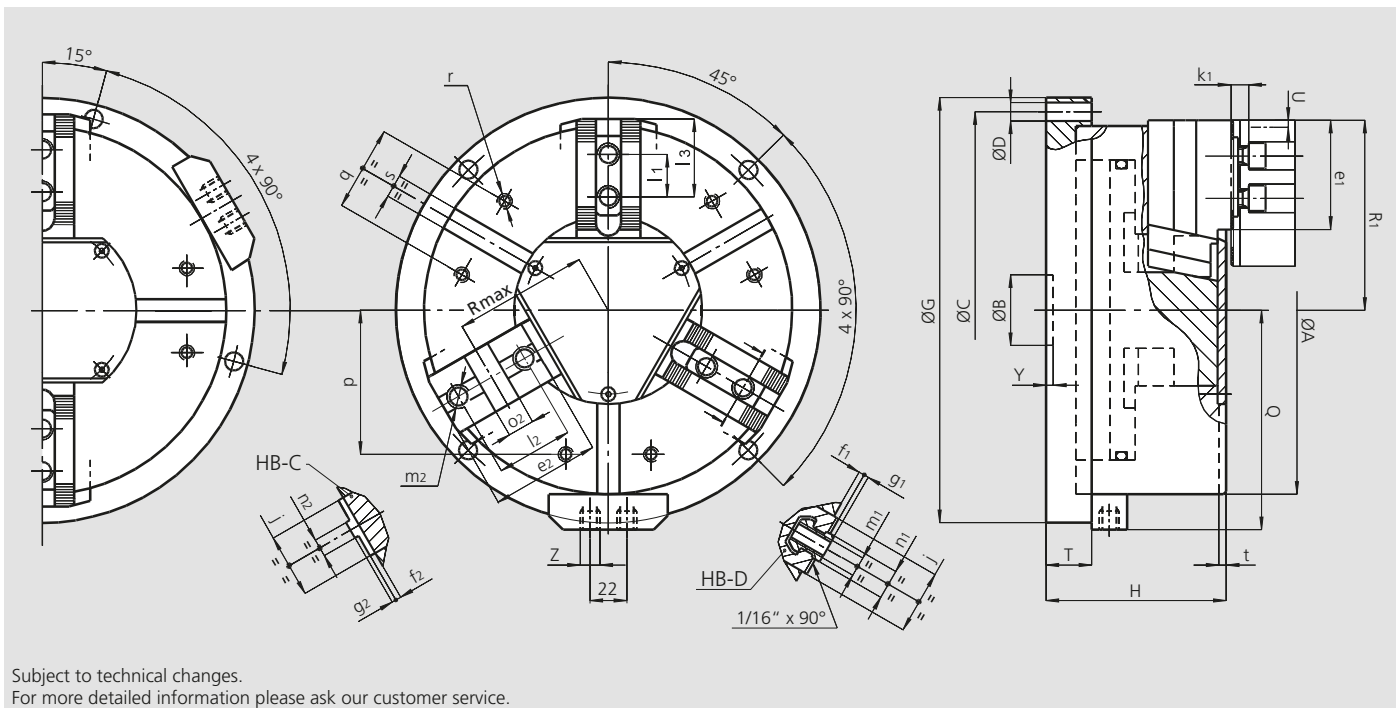
HB-D

HB-C

- Built-in hydraulic cylinder
- 2 and 3 jaws

INCH SERRATION
2 or 3 jaws

TONGUE & GROOVE
3 jaws



Subject to technical changes.
For more detailed information please ask our customer service.

Common dimensions

SMW-AUTOBLOK Type		HB-D 130	HB-D 165 HB-C 165	HB-D 210 HB-C 210	HB-D 250 HB-C 250	HB-D 315 HB-C 315
	A	mm	135	170	215	315
	B	mm	30	30	35	50
Fixing holes circle	C	mm	155	190	235	340
Fixing holes diameter	D	mm	9	11	11	13
	G	mm	175	210	255	360
	H	mm	89	100	117	141
	Q	mm	92.5	110	133	183
	T	mm	25	27	30	32
Radial jaw stroke (3 jaws)	U	mm	3	3.2	4	4.6
Radial jaw stroke HBL-D2 (2 jaws)	U	mm	5.6	6	7.5	10.5
	Y	mm	5	5	5	5
Hydraulic connections	Z	inch	R1/4"	R1/4"	R1/4"	R1/4"
	j	mm	26	30	36	45
	k1	mm	10	10	11	12
	p	mm	52	65	80	102
	q	mm	30	36	45	60
	r	mm	M6	M8	M8	M10
	s H12	mm	12	16	16	16
	t	mm	3.5	5	5	5

HB-D and HBL-D2 fixtures dimensions

SMW-AUTOBLOK Type		HB-D 130	HB-D 165	HB-D 210	HB-D 250	HB-D 315
	e1	mm	45	48	60	99
	f1	mm	3	4	3	4
	g1	mm	2.5	2.5	2.5	3.5
	l1	mm	16	16.5	23	30
T-nut position min. / max.	l3	mm	23 / 30	24 / 40	33 / 50	43 / 84
	m1	mm	M8	M10	M12	M16
	n1 h8	mm	12	14	17	21
Chuck open (3 jaws)	R1	mm	71	89	110	162
Chuck open HBL-D2 (2 jaws)	R1	mm	74	92	114	168

HB-C fixtures dimensions (available only as 3-jaw chuck version)

SMW-AUTOBLOK Type		HB-C 165	HB-C 210	HB-C 250	HB-C 315
	e2	mm	54	71	99
	f2	mm	4	4	4
	g2	mm	3	3	3
	l2	mm	38	44.4	54
	m2	mm	M10	M12	M16
	n2 h8	mm	7.94	7.94	12.70
	o2H7	mm	12.68	12.68	19.03
Chuck open	R1	mm	89	110	134
Chuck open	Rmax	mm	62	77	94

PB-D

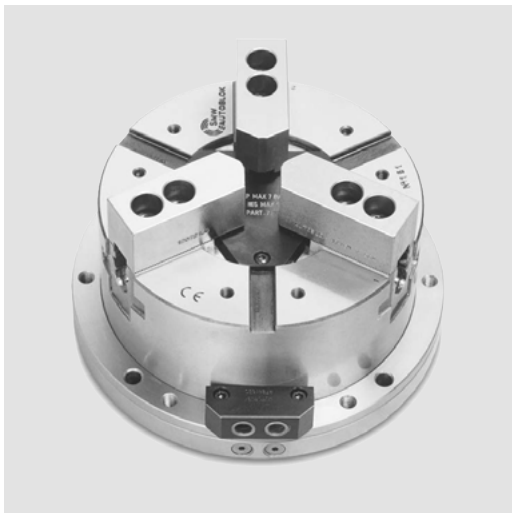
INCH SERRATION
2 or 3 jaws

PB-C

TONGUE & GROOVE
3 jaws

Stationary chuck, pneumatic Ø 130 - 315 mm

- Built-in cylinder
- 2 and 3 jaws



Application/customer benefits

- Self centering chuck used on milling machines, machining centers and special machines

PB-D: INCH SERRATED master jaws (1/16" x 90°)

PB-C: TONGUE & GROOVE master jaws (American standard)

PB-M: METRIC SERRATED master jaws (1.5 mm x 60°) **on request**

Technical features

- Stationary chuck consisting of a 2- or 3-jaw chuck with a built-in pneumatic cylinder
- Compact design
- Case hardened body to assure highest precision and long chuck life

Caution! Filtered and oiled operating air required

Standard equipment

Clamping unit
1 set of soft blank top jaws
(PB-C excluded)

Ordering example

Stationary chuck PB-C 250 (3 jaws)

or

Stationary chuck PBL-D2 165 (2 jaws)

Technical data

SMW-AUTOBLOK Type		PB-D 130	PB-D 165 PB-C 165	PB-D 210 PB-C 210	PB-D 250 PB-C 250	PB-D 315 PB-C 315
Radial jaw stroke	mm	3.2	3.6	4.4	5	6.3
Radial jaw stroke PBL-D2 (2 jaws)*	mm	6	6.8	8.4	9.7	12
Piston area	cm ²	82	143	236	358	548
Max. operating pressure	bar	7	7	7	7	7
Gripping force at 6 bar	kN	14	24	42	64	98
Gripping force at 6 bar PBL-D2 (2 jaws)*	kN	9	16	26	39	60
Weight (without top jaws)	kg	9	17	28	42	63

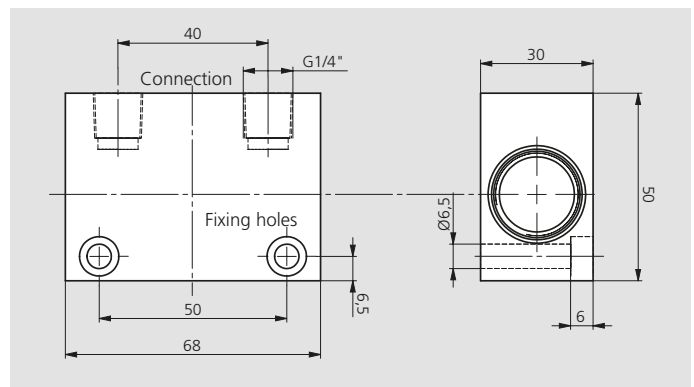
* The 2 jaw fixture is available with serrated master jaws (inch or metric) and long stroke only.

Option for the PB-D and PB-C chuck

Safety unit that maintains a constant pressure inside the cylinder which maintains a steady clamping force even in case of a drop or lack of line pressure

SAB

Safety unit with double non-return valve,
Id. No. 27581620



JAWS-CATALOG

Request or
download:
www.smw-autoblok.de

Stationary chuck, pneumatic Ø 130 - 315 mm

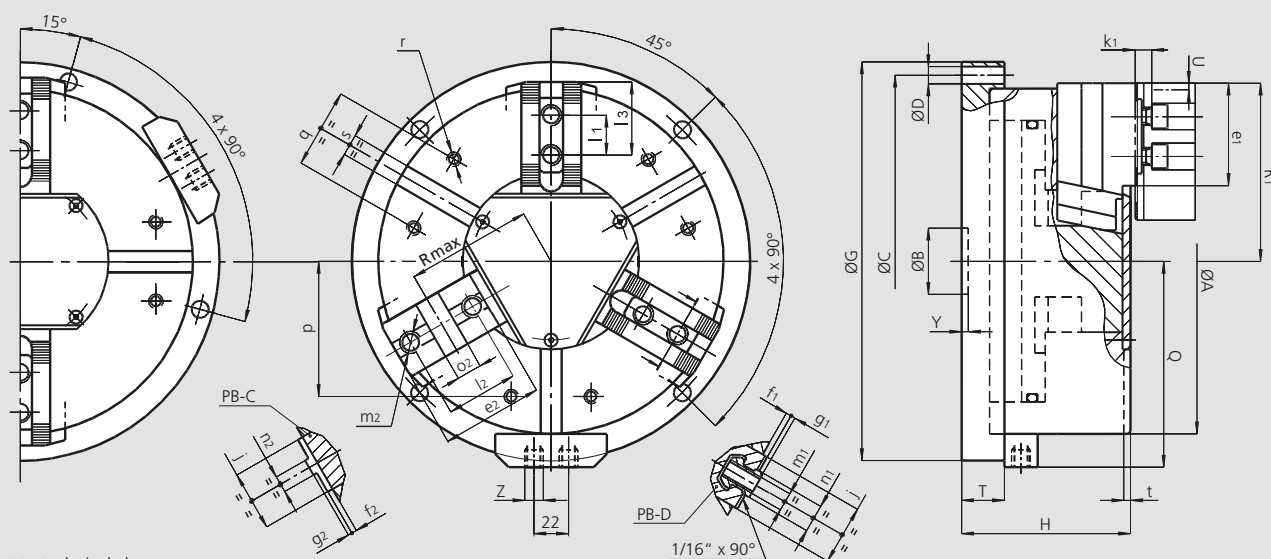
PB-D

INCH SERRATION
2 or 3 jaws

PB-C

TONGUE & GROOVE
3 jaws

- Built-in cylinder
- 2 and 3 jaws



Subject to technical changes.
For more detailed information please ask our customer service.

Common dimensions

SMW-AUTOBLOK Type			PB-D 130	PB-D 165 PB-C 165	PB-D 210 PB-C 210	PB-D 250 PB-C 250	PB-D 315 PB-C 315
	A	mm	135	170	215	260	315
	B	mm	30	30	35	50	50
Fixing holes circle	C	mm	155	190	235	280	340
Fixing holes diameter	D	mm	9	11	11	13	13
	G	mm	175	210	255	300	360
	H	mm	89	100	117	127	141
	Q	mm	93	110	133	155	183
	T	mm	25	27	30	32	32
Radial jaw stroke (3 jaws)	U	mm	3.2	3.6	4.4	5	6.3
Radial jaw stroke PBL-D2 (2 jaws)	U	mm	6	6.8	8.4	9.7	12
	Y	mm	5	5	5	5	5
Pneumatic connections	Z	inch	R1/4"	R1/4"	R1/4"	R1/4"	R1/4"
	j	mm	26	30	36	45	45
	k1	mm	10	10	11	12	12
	p	mm	52	65	80	102	120
	q	mm	30	36	45	60	60
	r	mm	M6	M8	M8	M10	M10
	s H12	mm	12	16	16	16	16
	t	mm	5	5	5	5	5

PB-D and PBL-D2 fixtures dimensions

SMW-AUTOBLOK Type			PB-D 130	PB-D 165	PB-D 210	PB-D 250	PB-D 315
	e1	mm	37	48	60	77	99
	f1	mm	3	4	3	4	4
	g1	mm	2.5	2.5	2.5	3.5	3.5
	l1	mm	16	16.5	23	30	30
T-nut position min. / max.	l3	mm	23 / 30	24 / 40	33 / 50	43 / 62	43 / 84
	m1	mm	M8	M10	M12	M16	M16
	n1 h8	mm	12	14	17	21	21
Chuck open (3 jaws)	R1	mm	71	89	110	134	162
Chuck open PBL-D2 (2 jaws)	R1	mm	74	92	114	138.5	168

PB-C fixtures dimensions (available in 3-jaw chuck version only)

SMW-AUTOBLOK Type			PB-C 130	PB-C 165	PB-C 210	PB-C 250	PB-C 315
	e2	mm	-	54	71	77	99
	f2	mm	-	4	4	4	4
	g2	mm	-	3	3	3	3
	l2	mm	-	38	44.4	54	63.5
	m2	mm	-	M10	M12	M16	M16
	n2 h8	mm	-	7.94	7.94	12.70	12.70
	o2 H7	mm	-	12.68	12.68	19.03	19.03
Chuck open	R1	mm	-	89	110	134	162
Chuck open	Rmax	mm	-	62	77	94	109

STP

INCH SERRATION
3 jaws

Stationary chuck, pneumatic Ø 125 - 280 mm

- Built-in cylinder
- With through-hole



Application/customer benefits

- Self centering stationary chuck used on milling machines / machining centers / special machines
- Low profile - large open center
- Easy installation on the machine

Technical features

- Stationary chuck consisting of a 3-jaw chuck with a built-in pneumatic cylinder
- Operating pressure from 2 to 10 bar

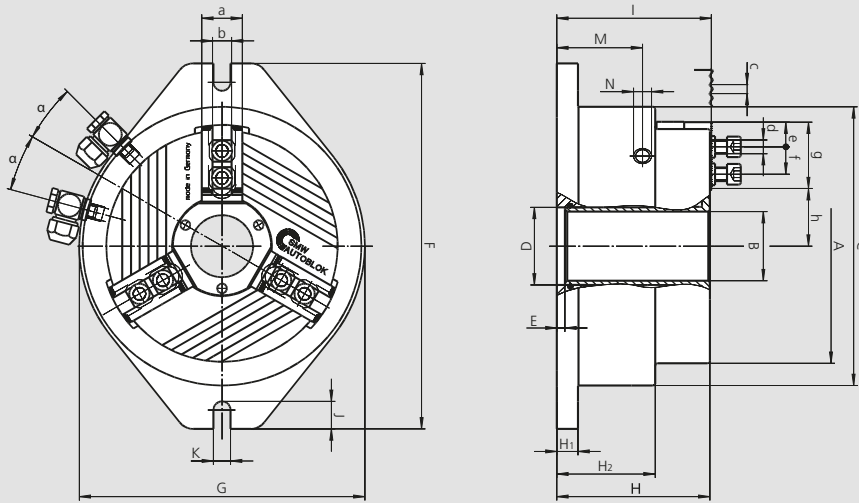
Caution! Filtered and oiled, operating air required

Standard equipment

- Stationary chuck
- 1 set T-nuts with bolts
- 1 set of soft blank top jaws
- 2 elbow fittings G1/4" (G1/8" on STP 125)

Ordering example

Stationary chuck STP 280 (3 jaws)



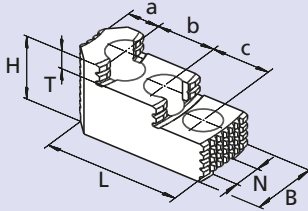
Subject to technical changes.
For more detailed information please ask our customer service.

Technical data

SMW-AUTOBLOK Type Id. No.		STP 125 013904	STP 160 013905	STP 240 053273	STP 280 052810
	A mm	136	171	240	284
	B mm	26	38	78	92
	C mm	156	201	250	316
	D H6 mm	34	46	86	102
	E mm	8	7.5	7	6
	F mm	220	275	320	400
	G mm	160	206	250	316
	H mm	102.5	130	134	155.5
	H1 mm	14.5	19	18.5	23.5
	H2 mm	66	83	86	97.5
	I mm	104	132	135.5	157
	J mm	22	24	24	30
	K mm	13	15	15	18
	M mm	57	72	75	86
Pneumatic connections	N inch	G 1/8"	G 1/4"	G 1/4"	G 1/4"
	a mm	25	30	36	44
	b f7 mm	12	14	17	21
Serration	c inch	1/16" x 90°	1/16" x 90°	1/16" x 90°	1/16" x 90°
Bolt ISO 4762 12.9	d mm	M8 x 30	M10 x 35	M12 x 35	M16 x 40
Min.	e mm	4	6	8	12
T-nuts distance min. / max.	f mm	17/25	17/31	22/41.5	25/51
Serration length	g mm	40	50	59	75
Min. / max.	h mm	25.9 / 28.9	24.9 / 37	57.7 / 61.9	70 / 65
	α deg.	15	15	15	7.5
Radial jaw stroke	mm	3	4.1	4.2	5
Operating pressure min. / max.	bar	2 / 10	2 / 10	2 / 10	2 / 10
Piston area	cm ²	129	206	290	532
Gripping force at 6 bar	kN	20	35	60	95
Air consumption at 6 bar	l	1	2.4	5.5	6.6
Weight (without top jaws)	kg	19	21	40	56

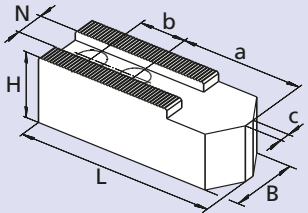
- Top jaws
- T-nuts

MHB-D Hardened reversible top jaws



Chuck Type	STP 125	STP 160	STP 240	STP 280
Jaw type	MHB-D 125	MHB-D 160	MHB-D 200	MHB-D 251
Id. No. (set)	12081306	12081636	12082036	12083036
B	30	34	40	5
H	34	39	45	56
L	58	65	82	105
T	8.5	10	10.5	13.5
N	12	14	17	21
Serration	1/16" x 90°	1/16" x 90°	1/16" x 90°	1/16" x 90°
a	13	18	19	26
b	16	16	23	30
c	16	16	23	30
kg / set	0.6	0.9	1.7	2.85

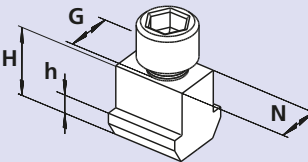
AWB-D Soft top jaws



Chuck Type	STP 125	STP 160	STP 240	STP 280
Jaw type	AWB-D 125	AWB-D 165	AWB-D 200	AWB-D 250
Id. No. (set)	12071300*	035954	081616	081618
B	30	40	40	50
H	30	40	40	50
L	60	80	90	120
N	12	14	17	21
Serration	1/16" x 90°	1/16" x 90°	1/16" x 90°	1/16" x 90°
a	29	43	53	70
b	16	22	22	28
kg / set	0.9	2.0	2.7	5.1

* Id. No. is per piece. 1 set = 3 pieces.

NST T-nuts



Chuck Type	STP 125	STP 160	STP 240	STP 280
T-nut type	NST 12	NST 14	NST 17-4	NST 21-5
Id. No.	089810*	013863*	013864*	033429*
N	12	14	17	21
H	21.5	26.5	26.5	30
h	7.5	9.5	9.5	11
G	M8	M10	M12	M16
Bolt ISO 4762 12.9	M8 x 30	M10 x 35	M12 x 35	M16 x 40
Tighten torque	30	50	70	150

* Id. No. is per piece. 1 set = 6 pieces.

JAWS-CATALOG
Request or
download:
www.smw-autoblok.de



M2-PB

Multiple fixture
with 2 chucks

Multiple chucks on fixture, pneumatic Ø 130 - 315 mm

- 2 or 3 jaws (PB-D / PB-M)
- 3 jaws (PB-C)



Application/customer benefits

- For milling machines / machining centers to clamp and machine multiple pieces

M2-PB: Multiple fixture with 2 chucks type PB-D, PB-C oder PB-M

Technical features

- The basic model needs separate circuits to operate the chucks singularly
 - 1st option:** SAB safety unit with non-return valve for every chuck.
 - 2nd option:** single non-return valve to operate all chucks simultaneously, with coupling unit to repressurize the fixtures after the storage of the pallets.
 - 3rd option:** every chuck can be equipped with a spring loaded clamping unit (internal or external clamping), to hold the workpieces during the pallet transfer.

Standard equipment

Multiple chuck on fixture
1 set of soft blank top jaws and
1 set T-nuts with bolts
(PB-C excluded)

Ordering example

Multiple chuck on fixture M2-PBC 250
(3 jaws)

Technical data

SMW-AUTOBLOK Type		M2-PB 130	M2-PB 165	M2-PB 210	M2-PB 250	M2-PB 315
Chucks radial jaw stroke	mm	3.2	3.6	4.4	5	6.3
Chucks radial jaw stroke PBL-D2 (2 jaws)*	mm	6	6.8	8.4	9.7	12
Actuating cylinder piston area	cm ²	82	143	236	358	548
Max. operating pressure	bar	7	7	7	7	7
Chucks gripping force at 6 bar	kN	14	24	42	64	98
Chucks gripping force at 6 bar PBL-D2 (2 jaws)*	kN	9	16	26	39	60
Weight (without top jaws)	kg	29.5	49	83	121	172

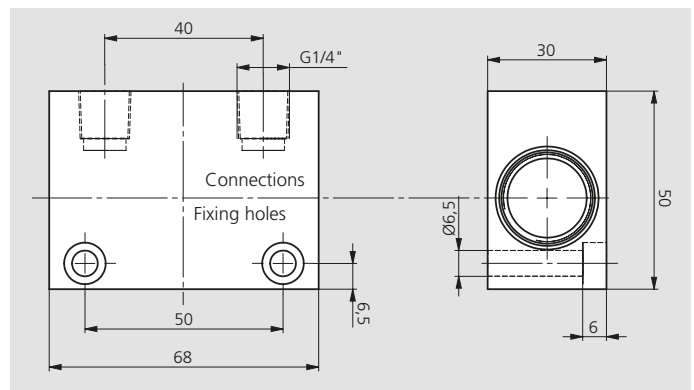
* The 2 jaw fixture is available with serrated master jaws (inch or metric) and long stroke only.

Option for the M2-PB fixture

Safety unit that maintains a constant pressure inside the cylinder which maintains a steady clamping force even in case of a drop or lack of line pressure.

SAB

Safety unit with double non-return valve
Id. No. 27581620



JAWS-CATALOG

Request or
download:
www.smw-autoblok.de

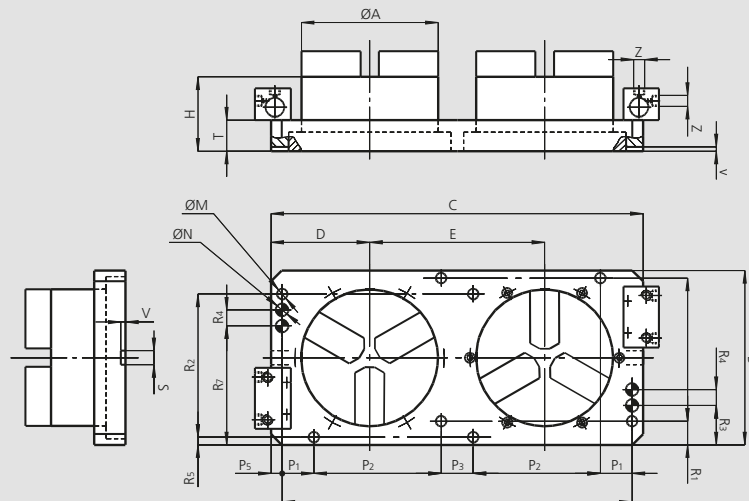


Multiple chucks on fixture, pneumatic Ø 130 - 315 mm

- 2 or 3 jaws (PB-D / PB-M)
- 3 jaws (PB-C)

M2-PB

Multiple fixture
with 2 chucks



Subject to technical changes.
For more detailed information please ask our customer service.

M2-PB dimensions

SMW-AUTOBLOK Type			M2-PB 130	M2-PB 165	M2-PB 210	M2-PB 250	M2-PB 315
Chuck diameter	A	mm	135	170	215	260	315
	B	mm	198	224	274	324	374
	C	mm	400	460	585	660	780
	D	mm	107.5	131	155	175	205
	E	mm	185	223	275	310	370
	H	mm	89	100	117	127	141
	M	mm	17	17	17	17	17
Fixing holes diameter	N H8	mm	20	20	20	20	20
Reference pin holes	P1	mm	-	50	50	50	50
	P2	mm	150	150	200	250	300
	P3	mm	50	50	50	-	-
	P5	mm	25	17.5	17.5	30	40
	P6	mm	350	460	550	600	700
	R1	mm	24	37	37	37	37
	R2	mm	150	175	225	275	325
	R3	mm	24	62	62	62	62
	R4	mm	-	25	25	25	25
	R5	mm	24	12	12	12	12
R7	mm	174	137	187	237	287	
S	mm	14	18	18	18	18	
T	mm	39	44	49	54	54	
V	mm	6	6	6	6	6	
Pneumatic connections	Z	inch	R1/4"	R1/4"	R1/4"	R1/4"	R1/4"

PBI-D

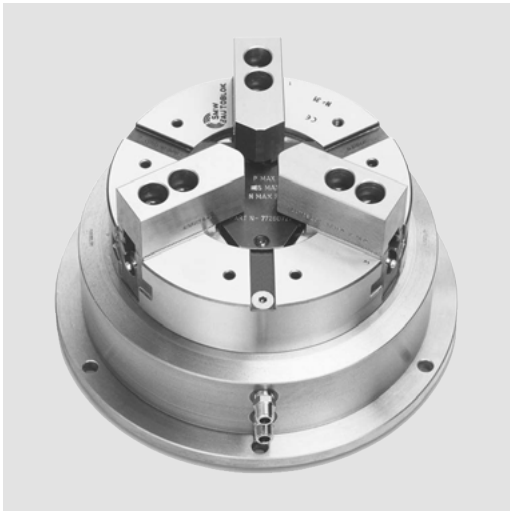
INCH SERRATION
2 or 3 jaws

PBI-C

TONGUE & GROOVE
3 jaws

Pneumatic chuck for indexing tables Ø 165 - 315 mm

- Built-in cylinder
- 2 and 3 jaws



Application/customer benefits

- Self centering rotating chuck with a pneumatic manifold used on indexing tables, not designed for constant rotation on turning machines

PBI-D: INCH SERRATED master jaws (1/16" x 90°)

PBI-C: TONGUE & GROOVE master jaws

PBI-M: METRIC SERRATED master jaws (1.5 mm x 60°) **on request**

Technical features

- 2- / 3-jaw chuck with a built-in pneumatic cylinder
 - Manifold for air supply
 - Case hardened body to assure highest precision and long chuck life
- Important!** Due to the friction between fixed manifold and rotating central body, the indexing table must provide a higher rotation torque than the one shown in the schedule below!

Standard equipment

Chuck unit
 1 set of soft blank top jaws
 (PBI-C excluded)
 1 set T-nuts with bolts
 (PBI-C excluded)

Ordering example

3-jaw chuck PBI-C 250
 or
 2-jaw chuck PBI-D 165

Technical data

SMW-AUTOBLOK Type		PBI-D 165 PBI-C 165	PBI-D 210 PBI-C 210	PBI-D 250 PBI-C 250	PBI-D 315 PBI-C 315
Radial jaw stroke	mm	3.6	4.4	5	6.3
Radial jaw stroke PBIL-D2 (2 jaws)*	mm	6.8	8.4	9.7	12
Piston area	cm ²	143	236	358	548
Max. operating pressure	bar	7	7	7	7
Gripping force at 6 bar	kN	24	42	64	98
Gripping force at 6 bar PBIL-D2 (2 jaws)*	kN	16	26	39	60
Torque Md	Nm	40	60	85	120
Weight (without top jaws)	kg	23	38	56	82

* The 2-jaw fixture is available with serrated master jaws (inch or metric) and long stroke only.



JAWS-CATALOG

Request or
download:
www.smw-autoblok.de

Pneumatic chuck for indexing tables Ø 165 - 315 mm

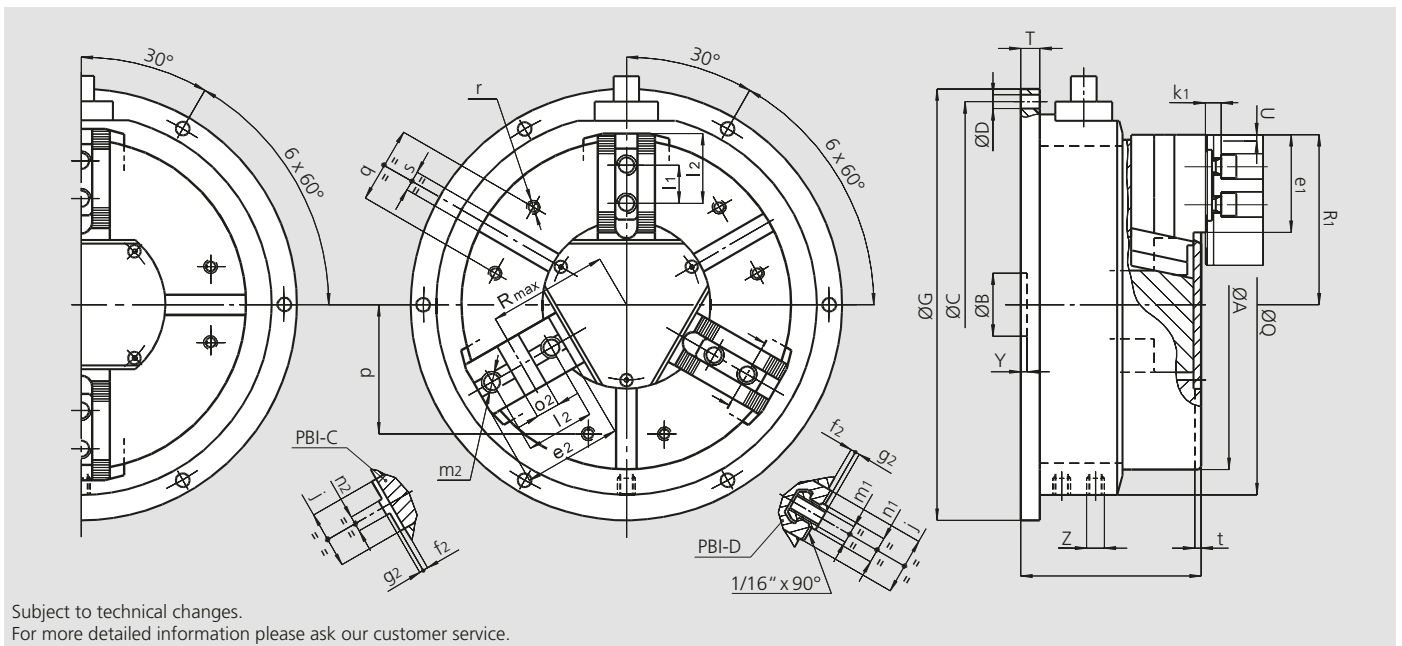
- Built-in cylinder
- 2 and 3 jaws

PBI-D

INCH SERRATION
2 or 3 jaws

PBI-C

TONGUE & GROOVE
3 jaws



Subject to technical changes.
For more detailed information please ask our customer service.

Common dimensions

SMW-AUTOBLOK Type		PBI-D 165 PBI-C 165	PBI-D 210 PBI-C 210	PBI-D 250 PBI-C 250	PBI-D 315 PBI-C 315	
	A	mm	170	215	260	315
	B	mm	30	35	50	50
Fixing holes circle	C	mm	225	280	320	390
Fixing holes diameter	D	mm	9	11	11	13
	G	mm	240	300	340	415
	H	mm	114	132	140	145
	Q	mm	210	260	300	365
	T	mm	10	12	14	14
Radial jaw stroke (3 jaws)	U	mm	3.6	4.4	5	6.3
Radial jaw stroke PBIL-D2 (2 jaws)	U	mm	6.8	8.4	9.7	12
	Y	mm	5	5	5	5
Pneumatic connections	Z	inch	R1/4"	R1/4"	R1/4"	R1/4"
	j	mm	30	36	45	45
	k1	mm	10	11	12	12
	p	mm	65	80	102	120
	q	mm	36	45	60	60
	r	mm	M8	M8	M10	M10
	s H12	mm	16	16	16	16
	t	mm	5	5	5	5

PBI-D and PBIL-D2 fixtures dimensions

SMW-AUTOBLOK Type		PBI-D 165	PBI-D 210	PBI-D 250	PBI-D 315	
	e1	mm	48	60	77	99
	f1	mm	4	3	4	4
	g1	mm	2.5	2.5	3.5	3.5
	l1	mm	16.5	23	30	30
T-nut position min. / max.	l3	mm	24 / 40	33 / 50	43 / 62	43 / 84
	m1	mm	M10	M12	M16	M16
	n1 h8	mm	14	17	21	21
Chuck open (3 jaws)	R1	mm	89	110	134	162
Chuck open PBIL-D2 (2 jaws)	R1	mm	92	114	138.5	168

PBI-C fixtures dimensions (available only in 3-jaw chuck version)

SMW-AUTOBLOK Type		PBI-C 165	PBI-C 210	PBI-C 250	PBI-C 315	
	e2	mm	54	71	77	99
	f2	mm	4	4	4	4
	g2	mm	3	3	3	3
	l2	mm	38	44.4	54	63.5
	m2	mm	M10	M12	M16	M16
	n2 h8	mm	7.94	7.94	12.70	12.70
	o2 H7	mm	12.68	12.68	19.03	19.03
Chuck open	R1	mm	89	110	134	162
Chuck open	Rmax	mm	62	77	94	109

- 2+2 self centering
- Independent self centering clamping in 2 axis
- Centrifugal force compensation



Application/customer benefits

- Independent self centering clamping in 2 axis via 1 central actuating mechanism
- Mechanical centering of the workpiece
- Standard cylinder can be used for actuating
- Clamping of every workpiece geometry possible
- Less workpiece deformation compared to 3-jaw chucks
- Long lifetime due to case hardened parts
- Large range of standard top jaws
- Suitable für OD and ID clamping

Technical features

- Centrifugal force compensation
- Optimized lubrication system
- Large through-hole
- Jaw interface 1/16" x 90°

Standard equipment

4-jaw chuck,
8 pieces T-nuts and bolts

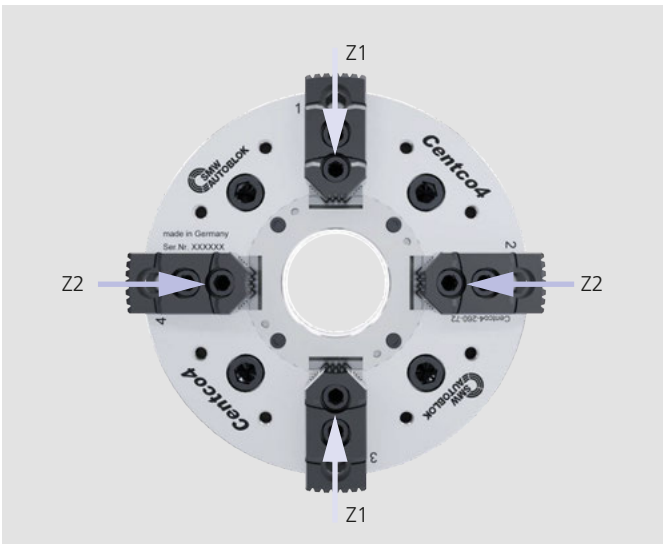
Ordering example

4-jaw chuck
Centco4-260-7-Z-220

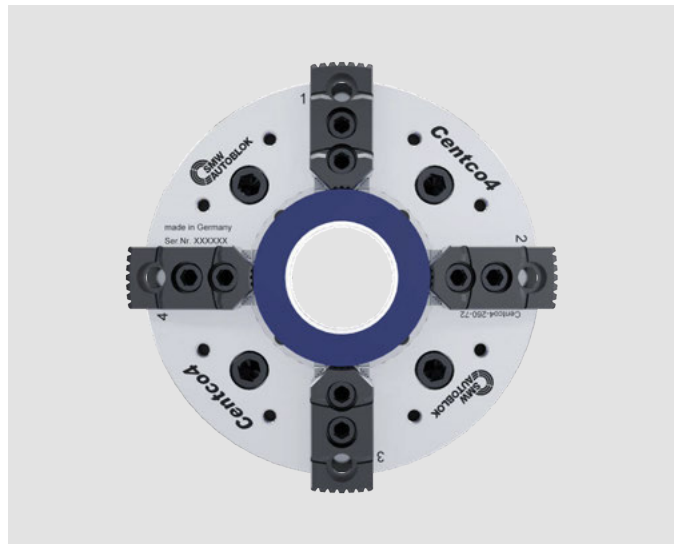
Function / Application examples

2+2 self centering and compensating clamping*

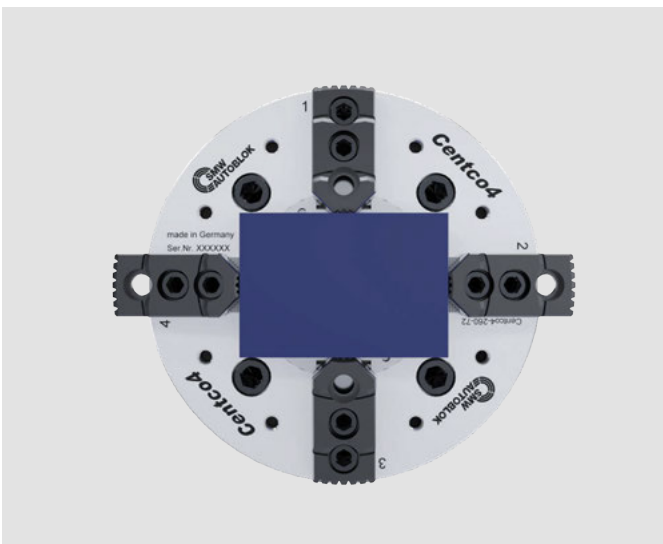
In the beginning the jaw pairs **Z1** + **Z2** only apply a force that is necessary to center the workpiece. Only if both jaw pairs **Z1** and **Z2** are in contact with the workpiece, the grip force necessary for machining is applied.



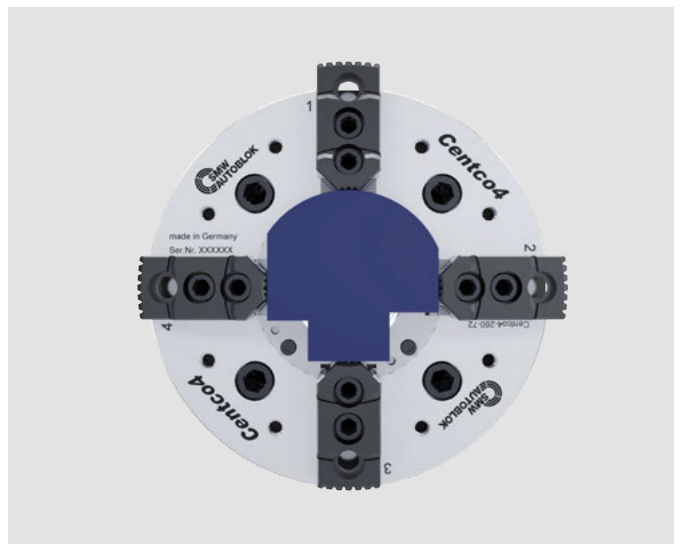
2+2 self centering clamping of round or thinwalled workpieces



2+2 self centering and compensating clamping of rectangular or square workpieces



2+2 self centering and compensating clamping of unshaped workpieces



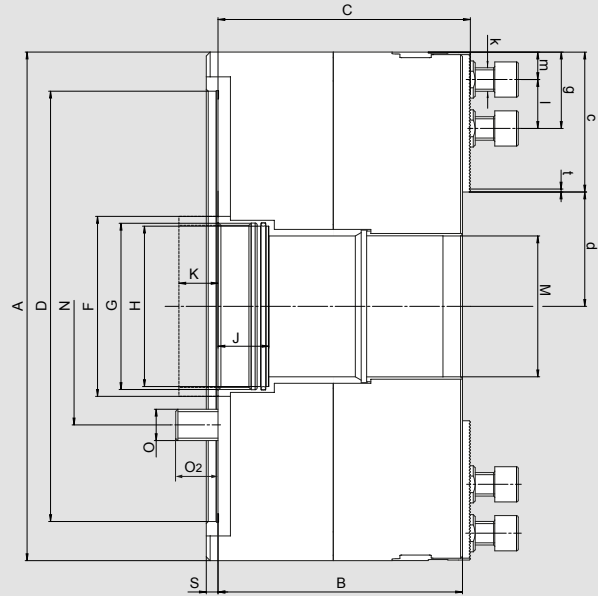
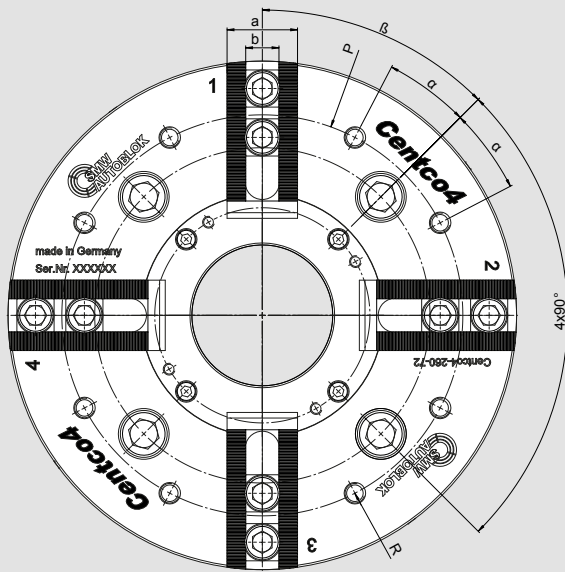
* **Z1**: Self centering clamping axis 1 / **Z2**: self centering clamping axis 2.
Z1 is compensating to **Z2**.

4-jaw chuck

- 2+2 self centering
- Independent self centering clamping in 2 axis
- Centrifugal force compensation

Centco4

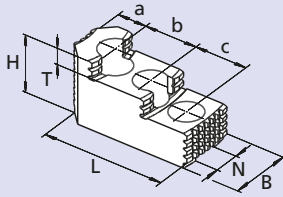
INCH
SERRATION



Subject to technical changes.
For more detailed information please ask our customer service.

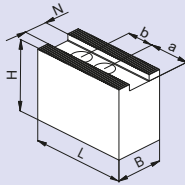
SMW-AUTOBLOK Type		Centco4 210-52	Centco4 260-72	Centco4 315-92	Centco4 400-112	Centco4 400-112	Centco4 500-155	Centco4 630-165
Mounting		Z170	Z220	Z300	Z300	Z380	Z380	Z380
Id. No.		163120	162780	163140	163175	163160	163580	163770
Outside diameter	A	210	260	315	400	400	500	630
	B	108.5	125	134	146	146	156	156
	C	110.5	129	138	150	150	159	159
Diameter Mounting	D H6	170	220	300	300	380	380	380
	F	68	92	115	142	142	178	188
Piston thread / depth	G	M60 x 2 / 20	M85 x 2 / 20	M105 x 2 / 20	M125 x 2 / 28	M125 x 2 / 28	M165 x 2 / 28	M175 x 2 / 28
Centering draw tube	H H7	57	82	102	122	122	162	172
Face contact draw tube	J	30	30	30	38	38	38	38
Piston stroke	K	17	20	23	25	25	30.5	30.5
Through-hole	M H7	52	72	92	112	112	155	165
Bolt circle	N	133.4	171.4	235.0	235.0	330.2	330.2	330.2
Fixing bolt	O	M12	M16	M20	M20	M24	M24	M24
	O2	19.5	22	29	25	29	34.5	34.5
	P	170	205	260	280	280	410 / 280	585 / 420 / 300
Thread / depth	R	M8 / 12	M10 / 21	M10 / 21	M10 / 21	M10 / 21	M10 / 15	2xM16/24-M12/18
	S	5	6	6	6	6	6	6
Base jaw width	a	35	36	40	45	45	60	60
Groove width	b H7	14	17	17	21	21	25.5	25.5
	c	60	71.5	91	117.5	117.5	142.5	202.5
Max.	d	45	58.5	66.5	82.5	82.5	107.5	112.5
Max. / min.	g	47 / 22	58 / 25	78 / 25	104 / 35	104 / 35	115 / 44	175 / 44
Bolt ISO 4762 12.9	k	M10	M12	M12	M16	M16	M20	M20
Spacing min.	l	16	19	19	25	25	30	30
Spacing min.	m	6	6	6	10	10	14	14
Inch serration	t	1/16" x 90°	1/16" x 90°	1/16" x 90°	1/16" x 90°	1/16" x 90°	1/16" x 90°	1/16" x 90°
	α°	17.5	17.5	17.5	17.5	17.5	15	15
	β°	45	45	45	45	45	45	45
Stroke per jaw	mm	4.5	5.25	6	6.5	6.5	8	8
Equalising per jaw	mm	3.4	4	5	5	5	6	6
Max. actuating force	kN	40	50	60	85	85	95	95
Max. total gripping force	kN	100	125	150	210	210	230	230
Max. speed	min-1	5000	4500	4000	3200	3200	2600	1800
Weight (without jaws)	kg	24.5	42	66	121.5	121.5	200	330
Moment of inertia	kgm ²	0.15	0.4	0.92	2.7	2.7	7.12	18.1
Recommended actuating cylinder		SIN-S 100 / 125	SIN-S 125 / 150	SIN-S 125 / 150	SIN-S 150 / 175	SIN-S 150 / 175	SIN-S 150 / 175	SIN-S 150 / 175
Recommended actuating cylinder		VNK-T2 130-52	VNK-T2 170-77	VNK-T2 225-95	VNK-T2 250-110	VNK-T2 250-110	VSG 450-165	VSG 450-165

MHB-D (INCH SERRATION) Hard, reversible stepped top jaws



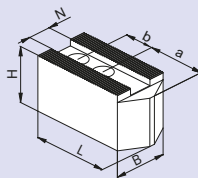
Centco4	210-52	260-72	315-92	400-112	500-115	630-165
Jaw type	MHB-D 160	MHB-D 200	MHB-D 200	MHB-D 251	MHB-D 500	MHB-D 500
Id. No.	12081638	12082038	12082038	12083038	12084548	12084548
Serration	1/16" x 90°	1/16" x 90°	1/16" x 90°	1/16" x 90°	3/32" x 90°	3/32" x 90°
B	34	40	40	45	60	60
H	39	45	45	56	75	75
L	65.2	82	82	106.2	140.8	140.8
T	10	10.5	10.5	13.5	19	19
N	14	17	17	21	25.5	25.5
a	18	19	19	26	38	38
b	16.5	23	23	30	38	38
c	16.5	23	23	30	38	38
kg / set	0.9	2.3	2.3	2.9	9.5	9.5

MWB-D (INCH SERRATION) Soft top jaws Tall version



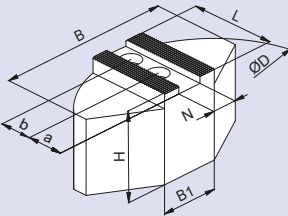
Centco4	210-52	260-72	315-92	400-112	500-115	630-165
Jaw type	MWB-D 165	MWB-D 200	MWB-D 200	MWB-D 250	MWB-D 400	MWB-D 400
Id. No.	5318607	5318837	5318837	5319680	5319831	5319831
Serration	1/16" x 90°	1/16" x 90°	1/16" x 90°	1/16" x 90°	3/32" x 90°	3/32" x 90°
B	35	40	40	50	60	60
H	60	60	60	80	90	90
L	70	90	90	120	170	170
N	14	17	17	21	25.5	25.5
a	33	43	43	62	90	90
b	16.5	22	22	28	35	35
kg / set	2.8	4.1	4.1	9.2	21.6	21.6

AWB-D (INCH SERRATION) Soft top jaws Low / pointed version



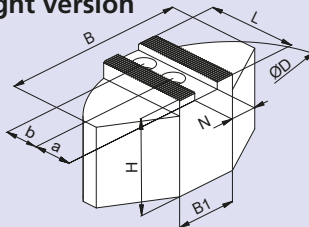
Centco4	210-52	260-72	315-92	400-112	500-115	630-165
Jaw type	AWB-D 165	AWB-D 200	AWB-D 200	AWB-D 250	AWB-D 400	AWB-D 400
Id. No.	5318608	5318838	5318838	5319681	5319834	5319834
Serration	1/16" x 90°	1/16" x 90°	1/16" x 90°	1/16" x 90°	3/32" x 90°	3/32" x 90°
B	40	40	40	50	60	60
H	40	40	40	50	60	60
L	100	110	110	120	170	170
N	14	17	17	21	25.5	25.5
a	43	53	53	70	115	115
b	22	22	22	28	35	35
kg / set	2.4	2.7	2.7	5.4	14.5	14.5

SBS-D (INCH SERRATION) Soft pie jaws



Centco4	210-52	260-72	315-92	400-112	500-115	630-165
Jaw type	SBS-D 165	SBS-D 200	SBS-D 200	SBS-D 200	SBS-D 400	SBS-D 400
Id. No.	5318610	5318839	5318839	5319684	5319832	5319832
Serration	1/16" x 90°	1/16" x 90°	1/16" x 90°	1/16" x 90°	3/32" x 90°	3/32" x 90°
B	120	140	140	180	330	330
B1	40	64	64	50	190	190
D	165	200	200	250	440	440
H	60	60	60	70	85	85
L	60	70	70	80	155	155
N	14	17	17	21	25.5	25.5
a	25	35	35	30	85	85
b	22	22	22	29	35	35
kg / set	7.1	10.3	10.3	18.3	71	71

SBA-D (INCH SERRATION) Soft pie jaws aluminium light version



Centco4	210-52	260-72	315-92	400-112	500-115	630-165
Jaw type	SBA-D 165	SBA-D 200	SBA-D 200	SBA-D 250	SBA-D 400	SBA-D 400
Id. No.	5318609	5318840	5318840	5319685	5319833	5319833
Serration	1/16" x 90°	1/16" x 90°	1/16" x 90°	1/16" x 90°	3/32" x 90°	3/32" x 90°
B	110	120	120	160	330	330
B1	40	40	40	50	190	190
D	165	200	200	250	440	440
H	58	58	58	78	98	98
L	58	72.5	72.5	87.5	160	160
N	14	17	17	21	25.5	25.5
a	25	35	35	40	85	85
b	20	22	22	29	35	35
kg / set	2.4	3.7	3.7	7.2	32	32

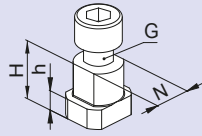
* SMW-AUTOBLOK is recommending not to clamp any diameters, that are larger than the chuck O.D.



- T-Nuts
- Covers for through-hole

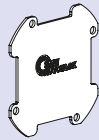
INCH
SERRATION

NST T-nuts suitable for Centco4



Centco4	210-52	260-72	315-92	400-112	500-155	630-165
T-nut type	NST14	NST17	NST17	NST21	NST25	NST25
Id. No.	163134	016021	016021	014788	014812	014812
	N 14	17	17	21	25.5	25.5
	H 20	23	23	27	29	29
	h 7.5	9	9	10	11	11
	G					
Cyl.-screw ISO 4762-12.9	M10 x 25	M12 x 30	M12 x 30	M16 x 35	M20 x 40	M20 x 40
Torque Md max. (Nm)	50	70	70	150	250	250

cover for through-hole



Centco4	210-52	260-72	315-92	400-112	500-155	630-165
Id. No.	163135	163136	163137	163138	163584	163585

**Important for maintenance and safe operation,
to be ordered with the chuck**

Grease K67

Special grease for
manual and power chucks



Cartridge 14 Oz. (DIN 1284)
Grease content 500 g
Id. No. 10731223

Can 1000 g
Id. No. 10731224

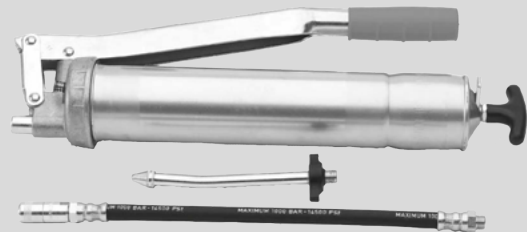


- High adhesion
- High resistance against coolant
- High load bearing capacity
- Low friction coefficient
- High gripping force
- Avoids tribocorrosion

Grease gun

Grease gun (DIN 1283) for
cartridges 14 Oz. (DIN 1284)

- Also refillable from grease can 1000 g

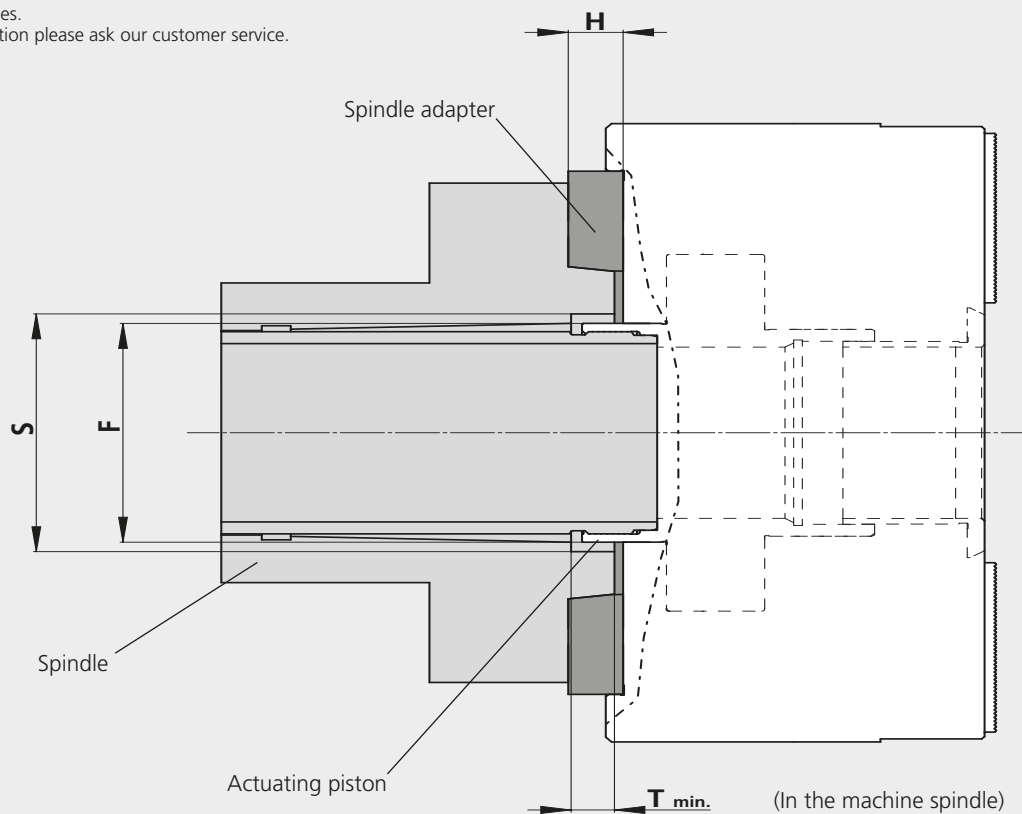


Lubrication set Id. No. 083726

Supply range

- Grease gun
- 1 Adapter flexible for high pressure grease nipple
- 1 Adapter for cone grease nipple

Subject to technical changes.
For more detailed information please ask our customer service.



Chuck type <i>Centco4</i>	Spindle mounting	Actuating piston dia. F [mm]	Clearance dia. S [mm]	Clearance - depth T min. [mm]*	Id. No. Spindle adapter	Spindle adapter height H [mm]
210-52-Z170	A06	68	> 68	14	24162000	17
			< 68	-	24162110	40
260-72-Z220	A06	92	< 92	-	24162532	50
	A08	92	> 92	17	24182500	19
> 92			-	24182520	43	
315-92-Z300	A08	115	> 115	10	24183100	30
			< 115	-	24184000	40
	A11	115	> 115	20	24113100	21
			> 115	11	24113110	30
< 115	-	2704390	44			
400-112-Z300	A11	142	< 142	-	2704390	44
400-112-Z380	A11	142	> 142	2	24115000	40
			< 142	-	2704391	44
	A15	142	> 142	23	24125000	23
			< 142	-	2704392	47
500-155-Z380	A11	178	> 178	8	24115000	40
			< 178	-	2704606	50
	A15	178	> 178	26.5	24125000	23
			< 178	-	273765	50
630-165-Z380	A11	188	> 188	8	24115000	40
			< 188	-	2704606	50
	A15	188	> 188	26.5	24125000	23
			< 188	-	273765	50

* to clear the axial stroke of the actuating piston (see „technical details piston stroke“ K)