

F500

ELECTRIC FLANGE

For the operation of standard chucks on
mill-turn centers

SENSITIVE ADJUSTMENT

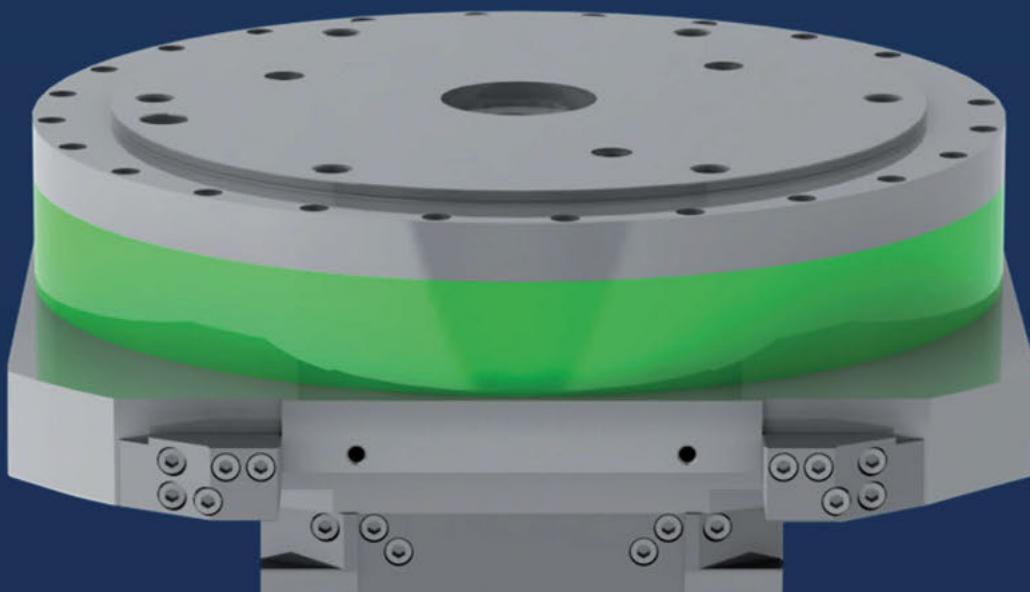
of the clamping force and the position
with highest repeat accuracy

SAFETY SYSTEMS

electrical and mechanical

STANDARD MOUNTING

for power chucks



F500



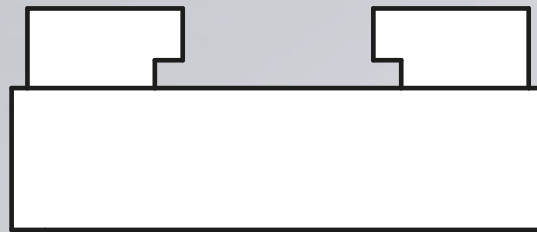
Industry 4.0
Product

Electric Flange

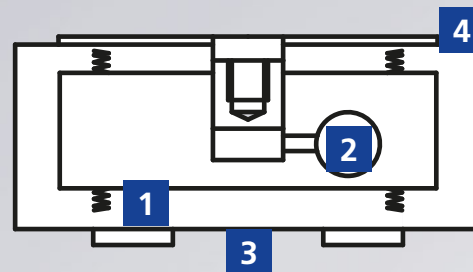
For the actuation of standard power chucks on mill-turn centers



Standard Power Chuck



Electric Flange



Modular construction kit : customizable to customer requirements

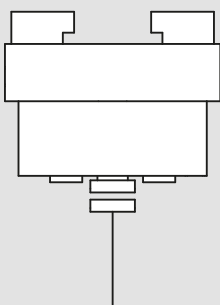
Functional Overview

- 1 Gripping force accumulation with the spring packs. Power will be only used for the actuation of the clamping system.
- 2 Electric drive e-motion
- 3 Wireless power and signal transmission via inductive coupler
- 4 Standard Interface Z380 or Z520

Configuration Example:

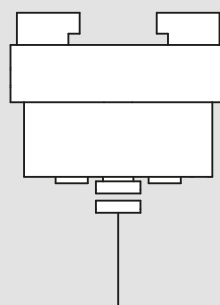
Integrated Solution

Loading Station



Wireless power and signal transmission via inductive coupler (loading operation)

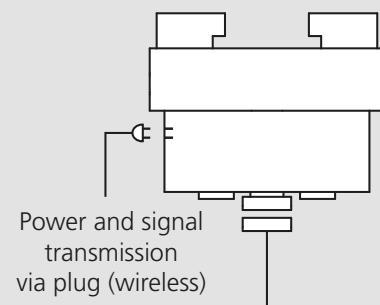
Machine



Wireless power and signal transmission via inductive coupler (processing)

Mounted Solution

Machine



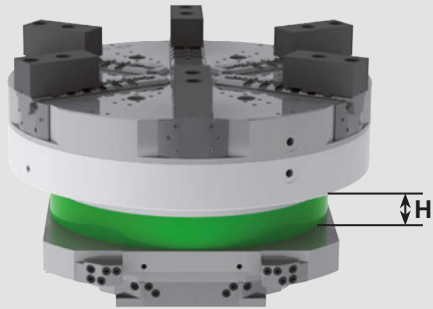
Power and signal transmission via plug (wireless)

Wireless signal transmission via inductive coupler (processing)

Integration-Options:

A. Integrated Solution in Machine Pallet

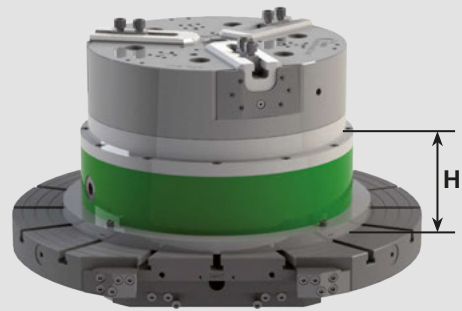
Weight without chuck: 94 kg*
 Installation height H from pallet top: 106 mm



*without machine pallet

B. Top Mounted Solution

Weight without chuck: 220 kg
 Installation height H from pallet top: 160 mm



Options for the Control of the Electric Flange:

A. External Control Mono

Machining Area
 for 1 Flange

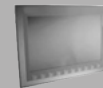


B. External Control Duo

Loading Station / Machining Area
 for 2 Flanges



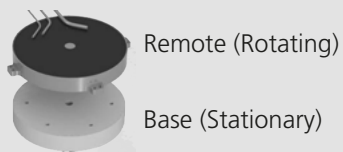
C. By Machine of the Customer



Loading Station / Machining Area:

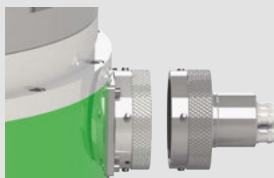
Transmission of Power and Signal via inductive coupler

Inductive Coupler Power and Signal

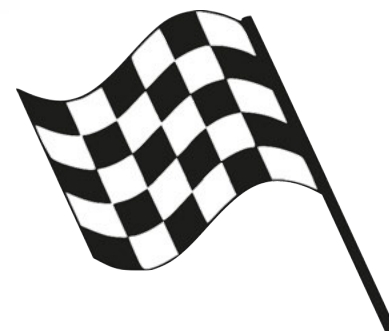


Power and signal transmission via plug/ inductive coupler

Manual Plug Energie



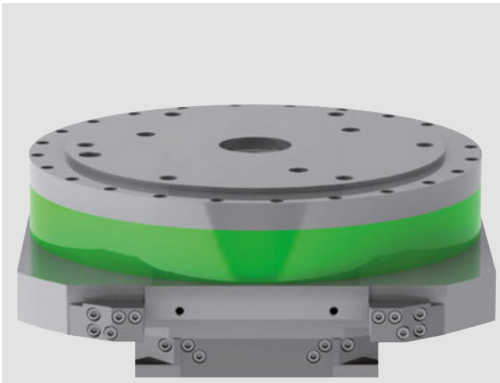
Inductive Coupler Signal



F500

Electric Flange

- For the actuation of standard power chucks on millturn centers
- Electric drive e-motion



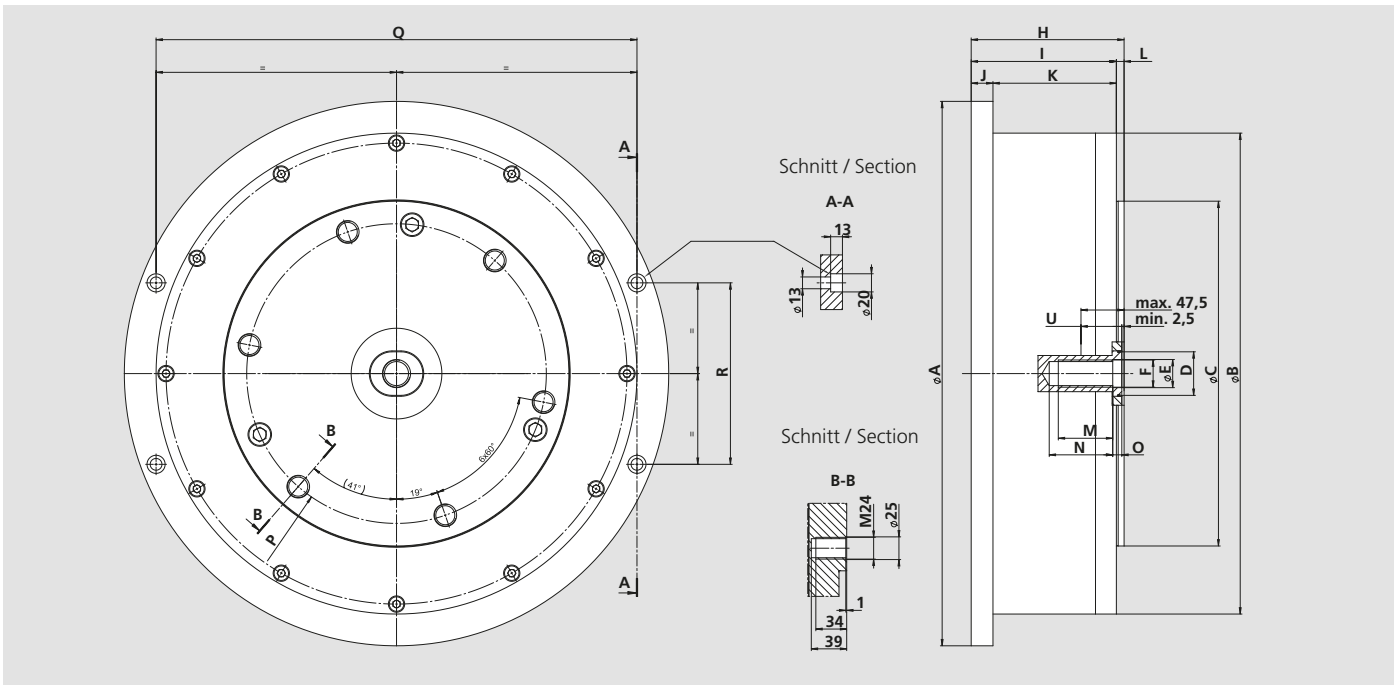
proofline® series
fully sealed – low maintenance

Application/customer benefits

- For the actuation of standard power chucks on millturn centers
- Standard mounting for power chucks
- Sensitive adjustment of the clamping force and the position with highest repeat accuracy
- Compact design: Low installation height
- Safe palleting on FMS (Flexible Manufacturing System)
- Industry 4.0 compatible
- Modular construction kit: Customizable for customer requirements

Technical features

- Piston stroke 45 mm
- Axial actuating force up to 100 kN
- Installation height from pallet top 106 mm (integrated solution) or 160 mm (top mounted solution)
- Fully sealed (proofline)



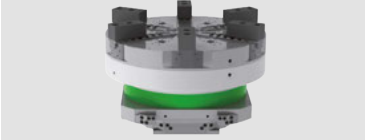
SMW-AUTOBLOK Type			F500
Mounting	A	mm	Ø 700
	B	mm	Ø 620
	C	mm	Ø 380 / Ø 520 (optional)
	D	mm	max. 48
	E	mm	31
	F	mm	M30
	H	mm	168.5
	I	mm	160
	J	mm	24
	K	mm	136
	L	mm	8.5
	M	mm	60
	N	mm	70
	O	mm	10
P	mm	Ø 330.2 / Ø 463.6 (optional)	
Q	mm	630	
R	mm	200	
Piston stroke	U	mm	45
Max. actuating force		kN	100
Min. actuating force		kN	10
Moment of inertia		kg·m ²	7.9

■ Modular construction kit

Customizable for Customer Requirements:

1. Integration

Integrated Solution in Machine Pallet



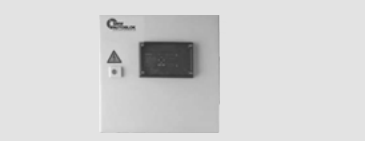
Top Mounted Solution



Type	Id. No.
Integrated Solution in Machine Pallet	460515
Top Mounted Solution	460516

2. Control Unit for the Electric Flange

Control Unit



Type	Id. No.
External Control Unit (1 Flange) Mono	460600
External Control Unit (2 Flanges) Duo	460601

3.1 Power and Signal Transmission Wireless via Inductive Coupler

Inductive Coupler



Type	Id. No.
Inductive Coupler Remote (Rotating)	206665
Inductive Coupler Base (Stationary)	206666
Inductive Coupler Base + Remote Set	460621

3.1 Power and Signal Transmission via Plug; Signal Transmission Wireless via Inductive Coupler

Manual Plug



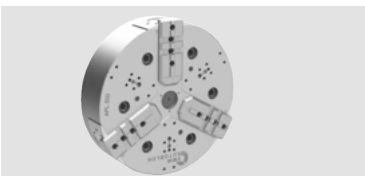
Type	Id. No.
Manual Plug	460630

Inductive Coupler
(only for signal transmission)



Type	Id. No.
Inductive Coupler Remote (Rotating)	205790
Inductive Coupler Base (Stationary)	205789
Inductive Coupler Base + Remote Set	460700

4. Recommended Sealed Power Chucks



APL-D
High Precision Power Chuck

- 3 jaws
- Sealed - low maintenance
- Closed center

Type	Id. No.
APL-D 500	77995025
APL-D 630	77184063
APL-D 800	77184080



IEP-D
High Precision Power Chuck

- 6 jaws (2+2+2 equalising)
- Sealed - low maintenance
- Closed center

Type	Id. No.
IEP-D 500	77995018
IEP-D 630	77996318
IEP-D 800	77998020

Further Standard Power Chucks: see the general catalog from SMW-AUTOBLOK (www.smw-autoblok.de)

Notes

A series of horizontal lines for writing notes, alternating between light blue and medium blue colors. The lines are evenly spaced and cover the majority of the page below the header.

**Germany**

SMW-AUTOBLOK Spannsysteme GmbH
Postfach 1151 • D-88070 Meckenbeuren
Wiesentalstraße 28 • D-88074 Meckenbeuren
Tel.: +49 (0) 7542 - 405 - 0
Vertrieb Inland ▶ vertrieb@smw-autoblok.de
Fax: +49 (0) 7542 - 3886
Sales International ▶ sales@smw-autoblok.de
Fax: +49 (0) 7542 - 405 - 181

**U.S.A.**

SMW-AUTOBLOK Corporation
285 Egidi Drive - Wheeling, IL 60090
Tel. +1 847 - 215 - 0591
Fax +1 847 - 215 - 0594
E-mail ▶ autoblok@smwautoblok.com

**Japan**

SMW-AUTOBLOK Japan Inc.
1-56 Hira, Nishi-Ku
461-Nagoya
Tel. +81 (0) 52 - 504 - 0203
Fax +81 (0) 52 - 504 - 0205
E-mail ▶ japan@smwautoblok.co.jp

**China**

SMW-AUTOBLOK (Shanghai) Work Holding Co.,Ltd.
Building 6, No.72, JinWen Road, KongGang
Industrial Zone, ZhuQiao Town, Pudong District
201323, Shanghai P.R. China
Tel. +86 21 - 5810 - 6396
Fax +86 21 - 5810 - 6395
E-mail ▶ china@smwautoblok.cn

**Mexico**

SMW-AUTOBLOK Mexico, S.A. de C.V.
Acceso III No. 16 Int.9,
Condominio Quadrum
Industrial Benito Juarez
Querétaro, Qro. C.P. 76120
Tel. +52 (442) 209 - 5118
Fax +52 (442) 209 - 5121
E-mail ▶ smwmex@smwautoblok.mx

**India**

SMW-AUTOBLOK Workholding Pvt. Ltd.,
Plot No. 4, Weikfield Industrial Estate,
Gat No. 1251, Sanaswadi, Tal - Shirur,
Dist - Pune. 412 208
Tel. +91 2137 - 616 974
Fax +91 2137 - 616 972
E-mail ▶ info@smwautoblok.in

**Turkey**

SMW AUTOBLOK Makina San. Ve Tic. Ltd. Şti.
Yenişehir Mah, Osmanlı Blv, Volume Kurtköy Ofis
No:9, Kat:1, D:4, PK: 34912, Pendik, İstanbul
Tel. +90 216 629 - 2019
E-mail ▶ info@smwautoblok.com.tr

**Sweden / Norway**

SMW-AUTOBLOK Scandinavia AB
Kasernvägen 2
SE - 281 35 Hässleholm
Tel. +46 (0) 761 420 111
E-mail ▶ info@smw-autoblok.se

**Italy**

AUTOBLOK s.p.a.
Via Duca D'Aosta n.24
Fraz. Novaretto
I-10040 Caprie - Torino
Tel. +39 011 - 9638411
Tel. +39 011 - 9632020
Fax +39 011 - 9632288
E-mail ▶ info@smwautoblok.it

**France**

SMW-AUTOBLOK
17, Avenue des Frères Montgolfier - Z.I. Mi-Plaine
F-69680 Chassieu
Tel. +33 (0) 4 - 727 - 918 18
Fax +33 (0) 4 - 727 - 918 19
E-mail ▶ autoblok@smwautoblok.fr

**Great Britain**

SMW-AUTOBLOK Telbrook Ltd.
7 Wilford Industrial Estate
Ruddington Lane, Wilford
GB-Nottingham, NG11 7EP
Tel. +44 (0) 115 - 982 1133
E-mail ▶ info@smw-autoblok-telbrook.co.uk

**Spain**

SMW-AUTOBLOK IBERICA, S.L.
Ursalto 4 - Pab. 9-10 Pol. 27
20014 Donostia - San Sebastián (Gipuzkoa)
Tel.: +34 943 - 225 079
Fax: +34 943 - 225 074
E-mail ▶ info@smwautoblok.es

**Russia**

SMW-AUTOBLOK Russia
B. Tulskaaya str., 10, bld.3, off. 323,
115191 Moscow (Russia)
Tel. +7 495 -231-1011
Fax +7 495 -231-1011
E-mail ▶ info@smw-autoblok.ru

**Taiwan**

AUTOBLOK Company Ltd.
No.6, Shuyi Rd., South Dist.,
Taichung, Taiwan
Tel. +886 4-226 10826
Fax +886 4-226 12109
E-mail ▶ taiwan@smwautoblok.tw

**Czech Republic / Slovakia**

SMW-AUTOBLOK s.r.o.
Merhautova 20
CZ - 613 00 Brno
Tel. +420 513 034 157
Fax +420 513 034 158
E-mail ▶ info@smw-autoblok.cz

**Poland**

SMW-AUTOBLOK Poland Sp. z o.o.
Ul Ligocka 103 - Building 8
40-568 Katowice
Tel. +48 (0) 664 673 428
E-mail ▶ info@smwautoblok.pl

**Korea**

SMW-AUTOBLOK KOREA CO., LTD.
1108 ho, Baeksang Startower 1st,
65, Digital-ro 9-gil, Geumcheon-gu
Seoul, ROK-08511, Korea
Tel. +82 2 6267 9505
Fax +82 2 6267 9507
E-mail ▶ info-korea@smw-autoblok.net